



move
Property Sales & Lettings

The Park, Cheltenham



The Park, Cheltenham

NO ONWARD CHAIN Spacious, newly redecorated 2-bed ground floor apartment in The Park, Cheltenham. Features modern kitchen, bright lounge with garden access, residents' parking, and communal gardens.

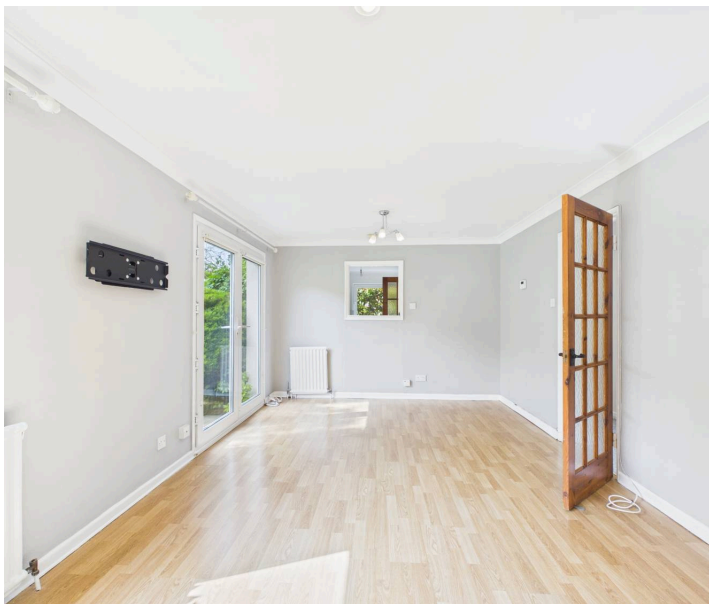
Council Tax band: C

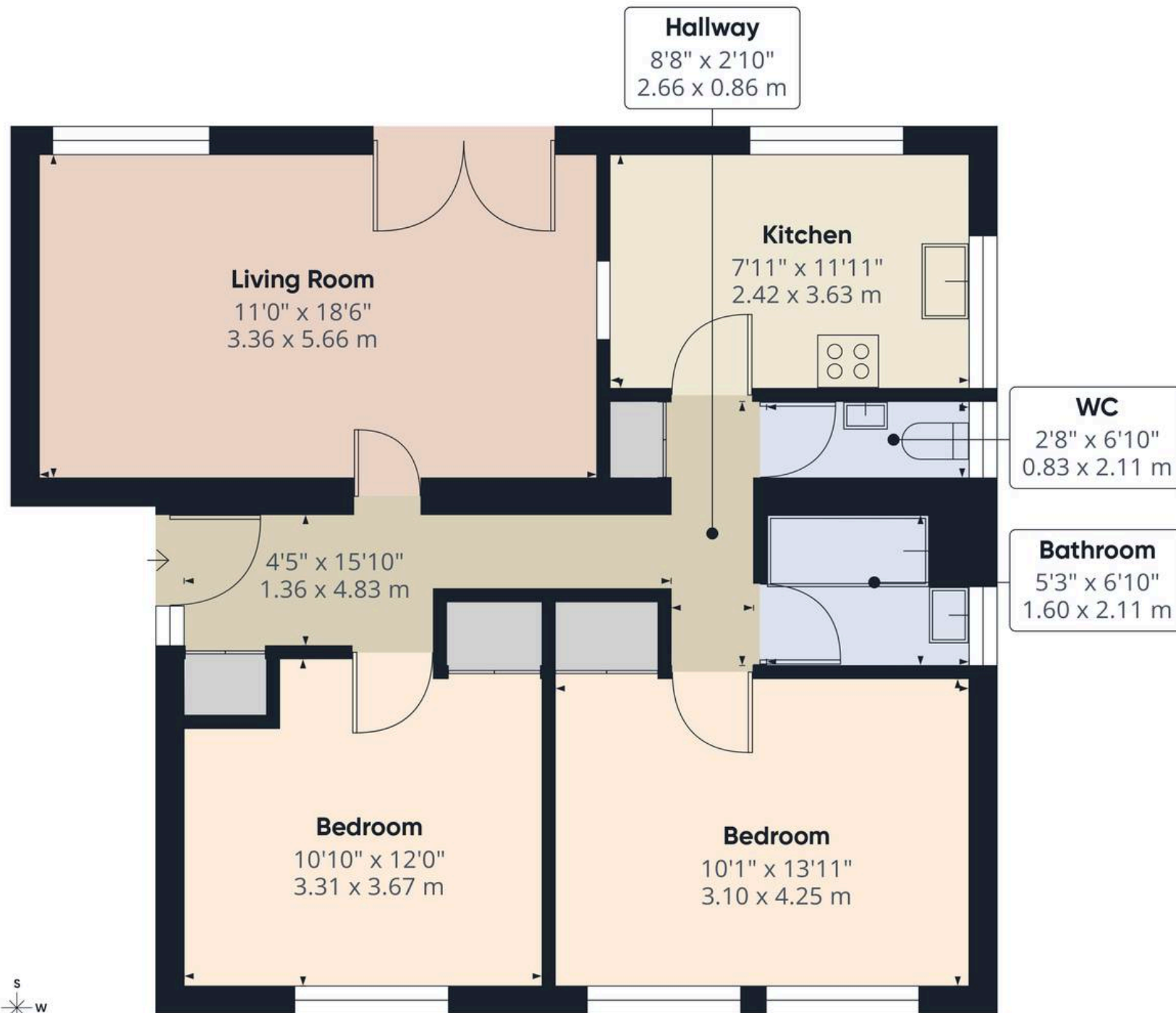
Tenure: Leasehold

EPC Energy Efficiency Rating: C

EPC Environmental Impact Rating: D

- Two Double Bedrooms
- Ground Floor Apartment
- NO ONWARD CHAIN
- Beautifully Maintained Communal Gardens
- Spacious Living Room
- French Doors To Communal Gardens
- Recently Redecorated Throughout
- Prestigious Park Location
- Close To Montpellier, The Suffolks And Bath Road
- Ideal For First Time Buyers, Downsizers or Investors





Approximate total area⁽¹⁾
732 ft²
68 m²

(1) Excluding balconies and terraces

Calculations reference the RICS IPMS 3C standard. Measurements are approximate and not to scale. This floor plan is intended for illustration only.

GIRAFFE360







Move Estate Agents Cheltenham

1 The Clarence Clarence Parade, Cheltenham - GL50 3NY

01242 257333

cheltenham@move.uk.net

move.uk.net/

move
Property Sales & Lettings