



A luxury two double bedroom ground floor apartment  
True Lovers Court, Northwood, Middlesex HA6 2QN

**ROBSONS**

**Asking Price: £2,000 pcm**

## **A luxury two double bedroom ground floor apartment**

True Lovers Court, Northwood, Middlesex HA6 2QN

---

• OPEN PLAN LIVING ROOM & KITCHEN • BEDROOM ONE WITH FITTED WARDROBES & ENSUITE SHOWER • BEDROOM TWO WITH FITTED WARDROBES • BATHROOM • PRIVATE TERRACE • COMMUNAL GROUNDS • TWO PARKING SPACES • DOUBLE GLAZING • GAS CENTRAL HEATING • SECURE GATED ENTRANCE • UNFURNISHED

---

### **Description**

A luxury two double bedroom two bathroom ground floor apartment offered in excellent decorative order throughout benefitting a private terrace and secure gated underground parking. Beautifully presented with secure access via electric gates.

\*\* An advance reservation payment of one weeks rent is required to secure the property \*\*

### **Location**

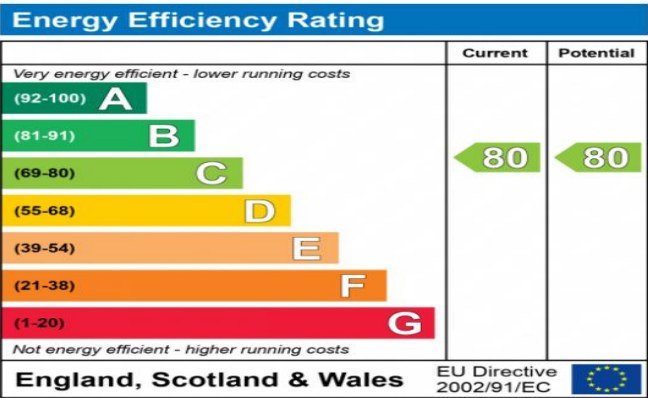
Northwood provides a range of shopping facilities including Waitrose supermarket, a variety of restaurants and other amenities with the Metropolitan Line station providing access to Baker Street and the City. There is a plethora of state and private schooling together with a wide choice of recreational facilities, which include golf courses and fitness centres. The M1, M40 and M25 motorways are also accessible.





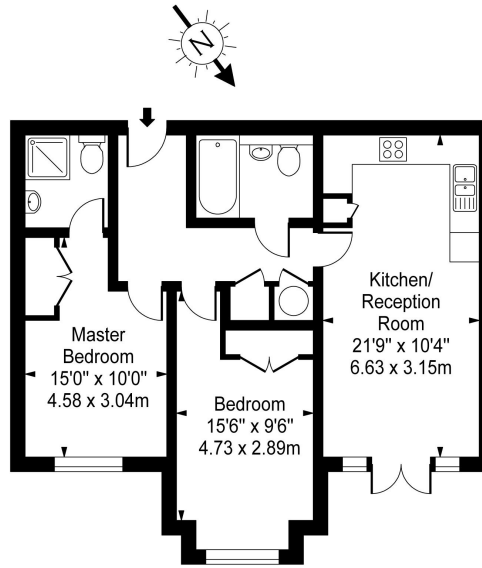
**Additional Information**

- Local Authority: London Borough of Hillingdon
- Council Tax Band: C
- Deposit Amount: £2,307.00
- Reservation Payment: One weeks rent
- Energy Efficiency Rating: Band C
- Available Date: 30/06/2026



The energy efficiency rating is a measure of the overall efficiency of a home. The higher the rating the more energy efficient the home is and the lower the fuel bills will be.





Ground Floor

**Approx. Gross Internal Area 712 Sq Ft - 66.16 Sq M**

For Illustration Purposes Only - Not To Scale Floor Plan by [www.pmsupply.co.uk](http://www.pmsupply.co.uk) Ref: No. 26461

This floor plan should be used as a general outline for guidance only and do not constitute in whole or in part an offer or contract. Any intending purchaser or lessee should satisfy themselves by inspection, searches, enquiries and full survey as to the correctness of each statement. Any areas, measurements or distances quoted are approximate and should not be used to value a property or be the basis of any sale or let.

