



MK

MK  
ESTATES

Flat 9, Fairfield Court 121A Richmond Park Road, Bournemouth

Offers in Region of £200,000

# Flat 9

Fairfield Court 121A Richmond Park Road,  
Bournemouth

Council Tax band: B

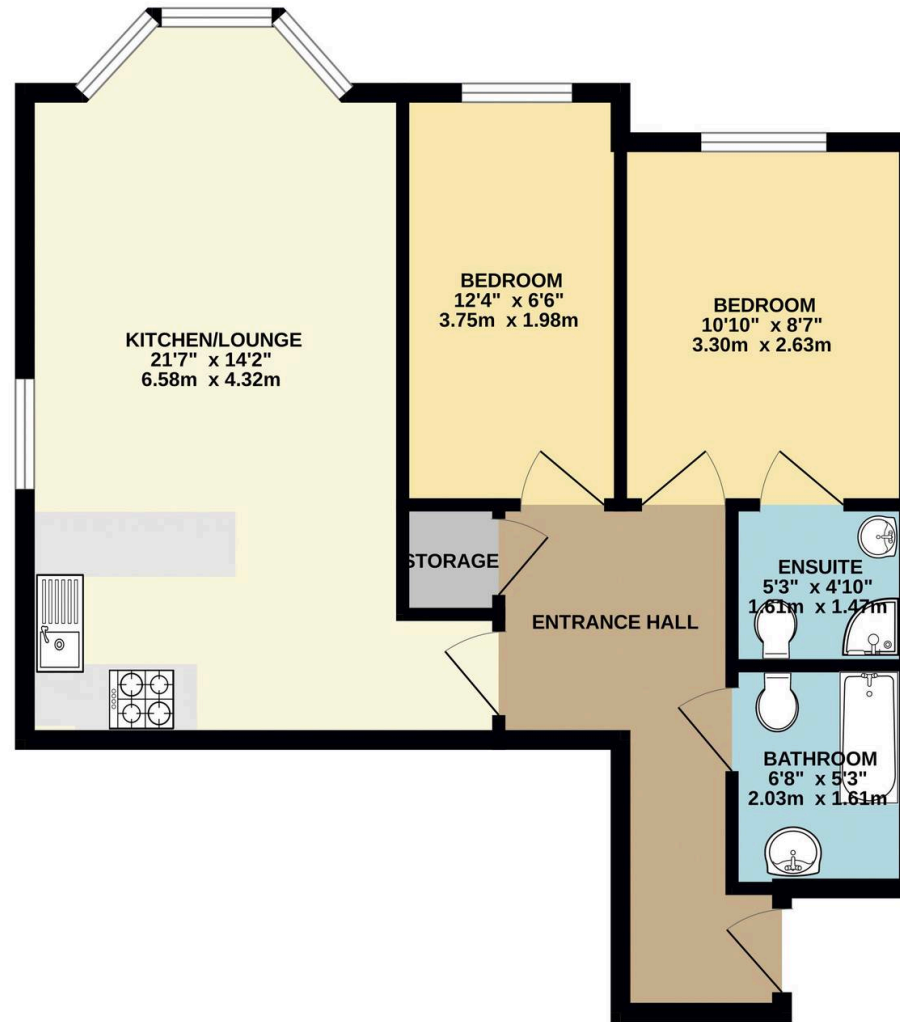
Tenure: Leasehold

- Two Double Bedroom Flat
- Spacious Open-Plan Lounge & Kitchen
- Allocated Parking For Each Flat In The Block
- Secure Bike Storage And Convenient Bin Store Facilities
- Low Maintenance Modern Build Perfect For Investors & First-Time-Buyers
- Sought After Location Near Charminster Highstreet
- Gas Fired Central Heating & UPVC Double Glazing
- Excellent Local Travel Options Including Less Than Two Minutes From The Wessex Way
- EPC & Council Tax Both B
- Service Charge - £125 per month | Ground Rent - £225 per year





GROUND FLOOR  
568 sq.ft. (52.8 sq.m.) approx.



TOTAL FLOOR AREA : 568 sq.ft. (52.8 sq.m.) approx.

Whilst every attempt has been made to ensure the accuracy of the floorplan contained here, measurements of doors, windows, rooms and any other items are approximate and no responsibility is taken for any error, omission or mis-statement. This plan is for illustrative purposes only and should be used as such by any prospective purchaser. The services, systems and appliances shown have not been tested and no guarantee as to their operability or efficiency can be given.  
Made with Metropix ©2026