



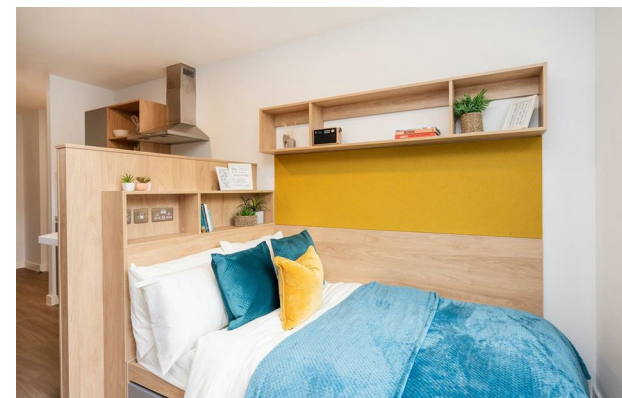
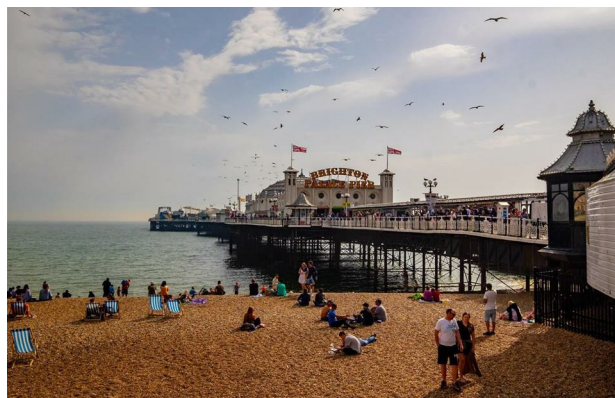
Moulsecoomb Way | | Brighton | BN2 4QZ

£259 Per week



Moulsecoomb Way |  
Brighton | BN2 4QZ  
£259 Per week

BRIGHTON | STUDENT | SEPTEMBER



- Indoor and outdoor social spaces
- 24-hour gym
- High speed Wi-Fi
- Utilities including water and heating
- Strong community
- Hosting kitchen
- Onsite laundry facilities
- Contents insurance
- Excellent location
- Student only

Energy Efficiency Rating		Current	Potential
<i>Very energy efficient - lower running costs</i>			
(92 plus) <b>A</b>			
(81-91) <b>B</b>			
(69-80) <b>C</b>			
(55-68) <b>D</b>			
(39-54) <b>E</b>			
(21-38) <b>F</b>			
(1-20) <b>G</b>			
<i>Not energy efficient - higher running costs</i>			
<b>England &amp; Wales</b>		EU Directive 2002/91/EC	

Lower Ground Floor  
27 Ridley Place  
Newcastle upon Tyne  
Tyne and Wear  
NE1 8JN  
0191 6403450  
info@propertybynest.co.uk