



Camden Park Road, NW1

£475,000

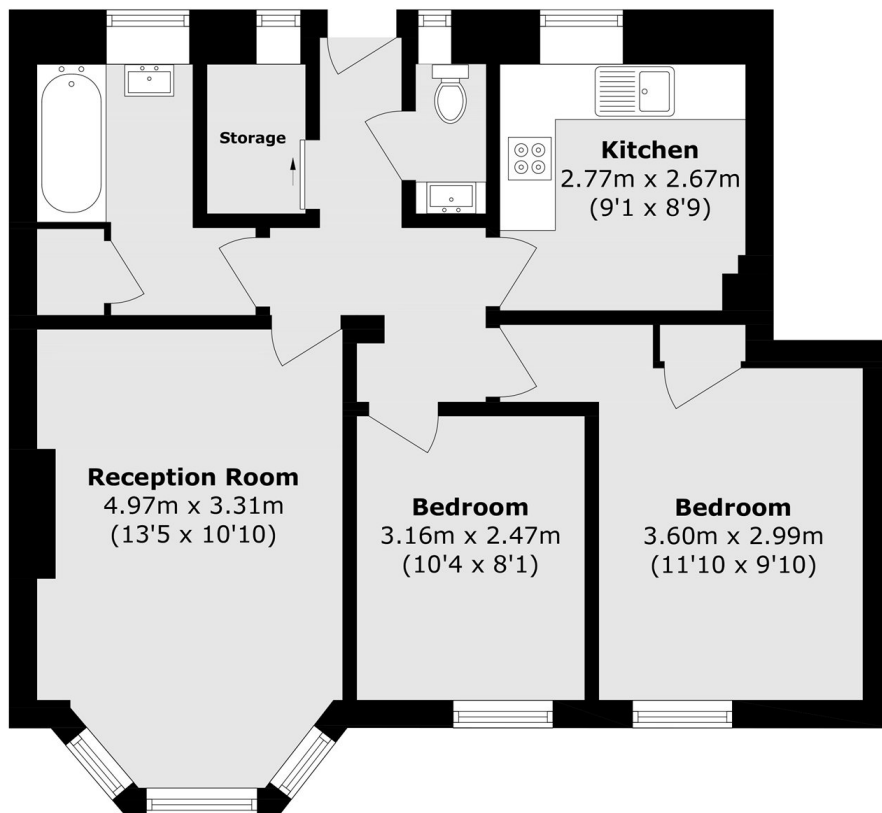
This two double bedroom apartment is in great condition throughout. The property has a large reception room, wood flooring throughout, a separate kitchen and double glazed windows.

The area has excellent schools including Torriano Primary School and the popular Camden School for Girls. Kings Cross and Granary Square are in close proximity, offering a wonderful choice of bars and restaurants.

Features

- Two Double Bedrooms
- One Bathroom
- Leasehold
- Chain Free
- Great Location
- Communal Gardens

Camden Park Road, London, NW1



Total area (approx.): 61.7 sq. m (664.1 sq. ft)