



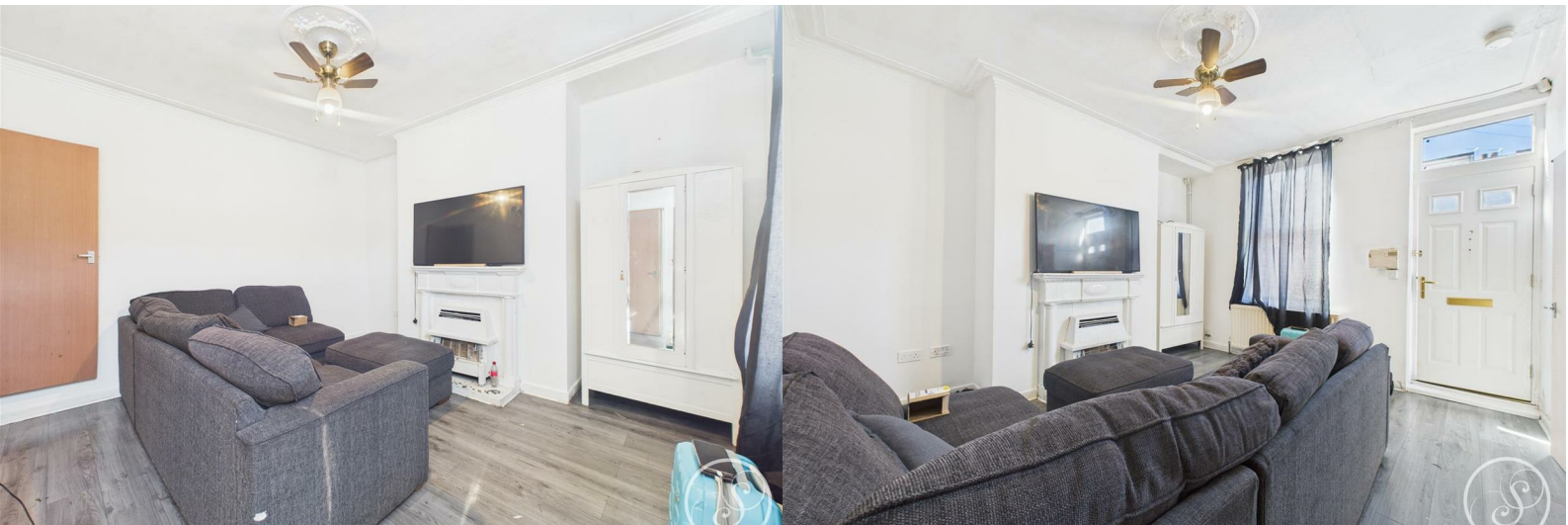
Stoneacre
Properties



Nowell Grove

Leeds, LS9 6HY

Offers Over £115,000



Nowell Grove

Leeds, LS9 6HY

Offers Over £115,000



Entrance

Entering the property you are welcomed into the living room which offers access to the kitchen.

Living Room

Spacious living room with access to the kitchen.

Kitchen

Made up of wall and base units with freestanding oven/hob, space for a table and fridge/freezer. Access offered to the basement.

Basement

A useable basement currently housing the utilities, with external door. Potential to fully convert.

Bedroom 1

Large double bedroom to the first floor of the property.

Bathroom

Situated to the first floor of the property with shower over bath, toilet and sink.

Bedroom 2

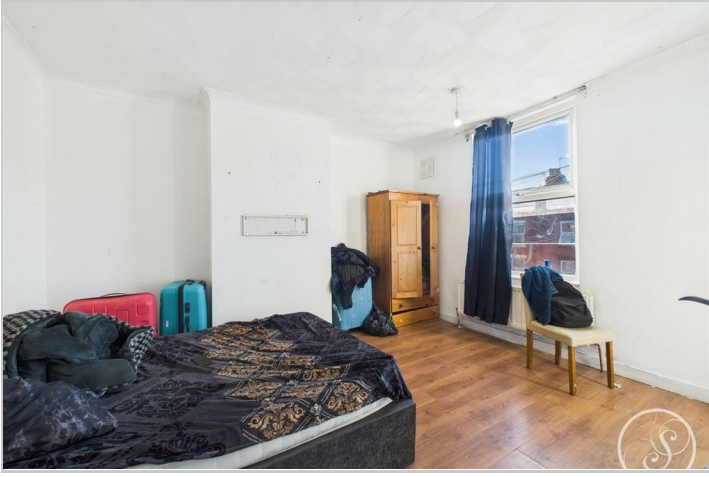
Second double bedroom situated to the second floor.

Bedroom 3

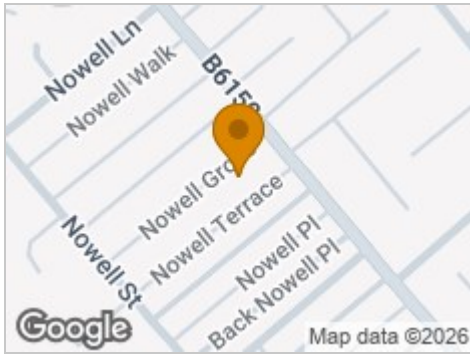
Third single bedroom / office.

External

Courtyard style front garden.



Road Map



Hybrid Map



Terrain Map



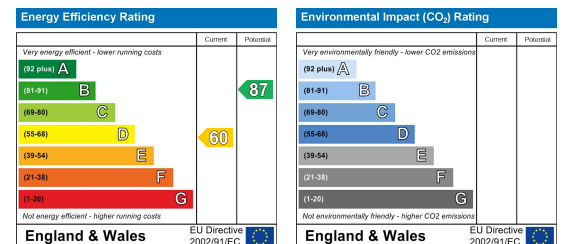
Floor Plan



Viewing

Please contact our Chapel Allerton Sales Office on 0113 237 0999 if you wish to arrange a viewing appointment for this property or require further information.

Energy Efficiency Graph



These particulars, whilst believed to be accurate are set out as a general outline only for guidance and do not constitute any part of an offer or contract. Intending purchasers should not rely on them as statements of representation of fact, but must satisfy themselves by inspection or otherwise as to their accuracy. No person in this firm's employment has the authority to make or give any representation or warranty in respect of the property.