



Bronwydd, Birchgrove offers in excess of £180,000

- Beautiful 3 Bed Property
- Modern Throughout
- Viewing Highly Recommended
- Close to local Amenities
- Close to M4 Corridor
- Close To Local Schools
- EPC Rating: D



 3  1  1

pa peter
alan

01792 798201
morrison@peteralan.co.uk



About the property

Available for sale is this well-presented three-bedroom semi-detached home, ideally positioned in the popular residential area of Birchgrove. this property offers flexible living space and is perfectly suited for growing families.

The accommodation comprises an open lounge and dining room, offering ample space for both relaxing and entertaining. The modern kitchen is well-appointed, and the layout throughout the home is both practical and welcoming.

To the first and second floors, you'll find three bedrooms. Each room benefits from natural light and neutral décor, allowing new owners to move in with ease.

Externally, the property features an enclosed rear garden, ideal for children to play or for outdoor dining in the warmer months. To the front, there is off-road parking, adding to the property's convenience.

Situated close to well-regarded primary and comprehensive schools, and offering excellent transport links to



Accommodation

Hall

8' 8" x 3' 4" (2.64m x 1.02m)

Lounge/Dining Room

14' 4" x 14' 5" (4.37m x 4.39m)

Kitchen

10' 7" x 7' 2" (3.23m x 2.18m)

Bedroom One

8' 8" x 14' 6" (2.64m x 4.42m)

Bedroom Two

11' 1" x 8' 1" (3.38m x 2.46m)

Bedroom Three

6' 6" x 6' 1" (1.98m x 1.85m)

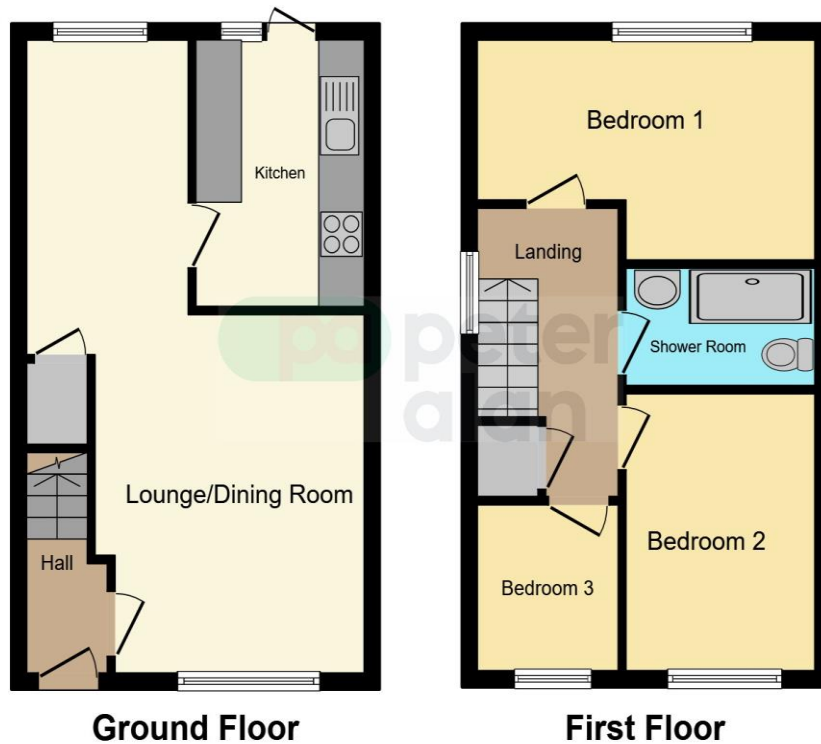
Landing

11' 6" x 6' 1" (3.51m x 1.85m)

01792 798201

morrison@peteralan.co.uk

Floorplan



This floor plan is for illustrative purposes only. It is not drawn to scale. Any measurements, floor areas (including any total floor area), openings and orientation are approximate. No details are guaranteed, they cannot be relied upon for any purpose and they do not form part of any agreement. No liability is taken for any error, omission or misstatement. A party must rely upon its own inspection(s). Powered by www.focalagent.com



Important Information

Note while we endeavour to make our sales details accurate and reliable, if there is any point which is of particular interest to you, please contact the office and we will be pleased to confirm the position for you. We have not personally tested any apparatus, equipment, fixtures, fittings or services and cannot verify they are in working order or fit for their purposes. Nothing in these particulars is intended to indicate that carpets or curtains, furnishings or fittings, electrical goods (whether wired or not). Gas fires or light fittings or any other fixtures not expressly included form part of the property offered for sale. This computer generated Floorplan, if applicable, is intended as a general guide to the layout and design of the property. It is not to scale and should not be relied upon for dimensions. Tenure: We cannot confirm the tenure of the property as we have not had access to the legal documents. The buyer is advised to obtain verification from their solicitor or surveyor.

Peter Alan Limited is registered in England and Wales under company number 2073153, Registered Office is Cumbria House, 16-20 Hockliffe Street, Leighton Buzzard, Bedfordshire, LU7 1GN. VAT Registration Number is 500 2481 05. For activities relating to regulated mortgages and non-investment insurance contracts, Peter Alan Limited is an appointed representative of Connells Limited which is authorised and regulated by the Financial Conduct Authority. Connells Limited's Financial Services Register number is 302221. Most buy-to-let