



## Durward Street, E1

£2,400 Per calendar month

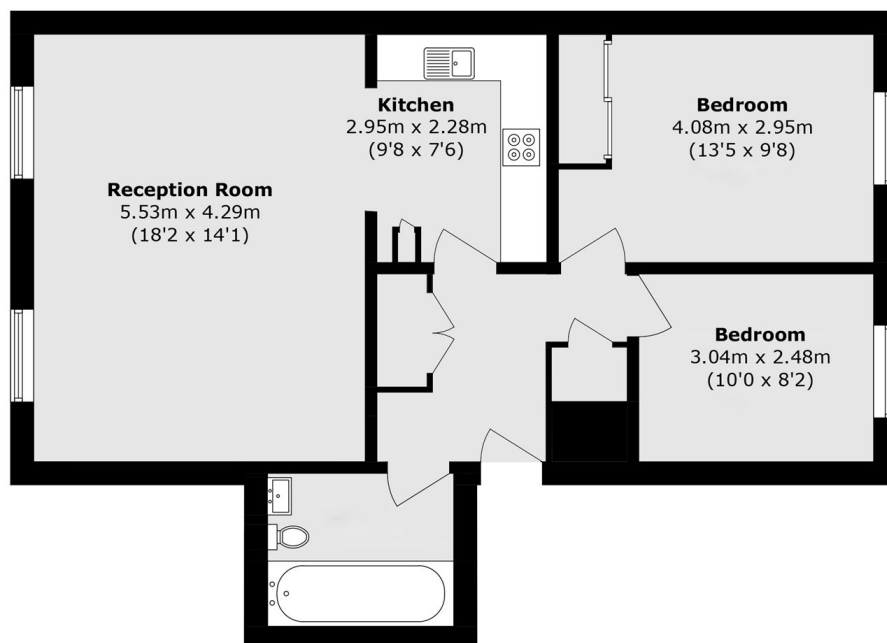
A two double bedroom apartment in this desirable development close to Whitechapel Station and The Elizabeth Line. This spacious apartment has an open plan living and kitchen area, two large bedrooms, and a family bathroom.

Kempton Court is perfectly located for easy access to Whitechapel Station giving you great transport links to both City and Canary Wharf, and even across to Bond Street within 15 minutes on the popular Elizabeth Line.

### Features

- Two Double Bedrooms
- Porter Service
- Communal Garden
- Juliette Balcony
- Elizabeth Line
- Whitechapel Station

# Durward Street, London, E1



Total area (approx.): 65.2 sq. m (701.8 sq. ft)