



The Thatch
Jubilee Road | Littlewick Green | Berkshire | SL6 3QU

FINE & COUNTRY

SELLER INSIGHT



Life Woven into a Home and Garden

From the moment David and I became a couple, life led me to this beautiful thatched cottage which became so much more than our home. His parents had bought it in 1956 and when I first saw it, in 1984, nothing much had changed since. I cooked Sunday lunches for his mother in a scullery with only a fridge-top for a work surface. It was basic, yes — but brimming with promise.

The real magic began when I saw the garden. It felt like stepping straight into my childhood favourite, The Secret Garden. It cried out for more than annuals and bare earth and I nurtured it with love, working alongside Nature and helped by townie David. He was allowed to cut the grass and hedges!

What followed has created decades of memories — all especially precious since David died. There have been so many laughter-filled parties (there has always been laughter) under marquees for over a 100, starting with our wedding party in 1991. What followed included cream teas; opening for the National Garden Scheme; fundraising meals; gatherings to celebrate Ivor Novello's life (he lived in Littlewick from 1927-51) and, finally, my 80th birthday last October. This is a place to gather, often in the kitchen, to celebrate and live life to the full. I even started my freelance publishing business here, in what the local paper called my "electronic cottage".

Inside, we kept the heart of our home traditional when we renovated in 1989 — welcoming and in keeping with its roots, while enhancing it for modern living. We added an upstairs corridor and new staircase; created vital storage in the eaves, and designed a kitchen using doors and other timber from the original house. Every drawer, every cupboard, has a story. Even the granite worktops were designed with care — one lowered so I, being what you could call a "sous chef", could comfortably stir a sauce. Though it will fit taller cooks.

Built in 1926 as "two labourers' cottages" with a studio above, has given it more than the usual number of doors, including one ideal for me which was to an under-stairs cupboard. We found that they help the flow from room to room, especially when entertaining large groups. And the thatch? It keeps you warm in winter, cool in summer. It's a joy to live under and, like our environmentally-conscious (solar panels and biomass boiler) additions, should have ensured a far more favourable EPC.

Outside, I designed the garden as a series of rooms, determined by an old chalkpit. Birds and bees dart among the blooms, untroubled by chemicals, and there are seats in sun or shade, all with a different vista. We've hosted everything from political campaigns and theatrical performances to yoga sessions and quiet breakfasts and drinks. And, of course, we enjoyed the fun of having Midsomer Murders filmed in our home six times.

The setting is idyllic: everyone's dream of a rose-covered thatched cottage on a village green, with a proper pub, a busy village hall and the sound of cricket on a summer's day. You can watch a match from our side gate or even from the bedroom window. The community is close-knit — supportive in tough times and always welcoming. The Littlewick Green Society, the church, the Cricket Club — there's always something to get involved in if you want to be part of village life.

My home of 35 years is more than bricks, beams and a beautiful roof. It has grown and adapted with us, cradling us through love, creativity, celebration, illness and loss. It's a place full of warmth and its soul is in every beam, every blossom, every laugh shared.

*For the next custodians, I hope you'll feel what we did — a sense of place, of potential and of belonging. You'll find that you get out of village life what you put in and in return, it gives back more than you can ever imagine.**

* These comments are the personal views of the current owner and are included as an insight into life at the property. They have not been independently verified, should not be relied on without verification and do not necessarily reflect the views of the agent.







STEP INSIDE

The Thatch

A Rose-Clad Thatched Cottage in the Heart of Littlewick Green

Nestled in the idyllic village of Littlewick Green, this enchanting thatched cottage offers quintessential English charm with a touch of TV stardom, having appeared in numerous episodes of *Midsomer Murders*.

Through the oak front door of this chocolate box cottage, draped with roses and wisteria, is a spacious entrance hall, leading into a beautifully-appointed home. It features three bedrooms, two bathrooms and three reception rooms. The heart of this home is a country-style kitchen breakfast room, large enough for everyday dining.

Stepping outside, the secluded, landscaped gardens are magical, with a waterfall and tranquil wildlife pond and a wisteria and rose-clad pergola providing *A Secret Garden* for outdoor enjoyment.

Additional benefits include an indoor, heated swimming pool, detached garage and driveway with ample parking.

This is a rare opportunity to own a piece of English charm with a touch of television glamour.

Ground Floor

Upon entering this delightful thatched cottage, you're immediately aware of its charm and warmth. The entrance hall flows effortlessly into the first of three reception rooms, where wood flooring and a 50s' brick Claygate fireplace set the tone for cosy evenings. French windows open onto a brick-paved patio, ideal for al fresco dining.

Just off this large, dual-aspect sitting room is the dining room which benefits from a convenient side entrance. The third reception room, currently

an office, is a versatile space and could also be a fourth bedroom.

The country-style kitchen-breakfast room, complete with built-in appliances, has plenty of room for everyday eating. Direct access to the rear garden, from here and the French windows, makes indoor-outdoor living seamless.

Also on the ground floor is a beautifully-appointed bathroom with a WC, vanity unit, double bath and separate walk-in shower. A cloakroom completes the ground floor accommodation.

Lower Ground Floor

Under the landing of the side door is a small wine cellar, accessed by a trapdoor.

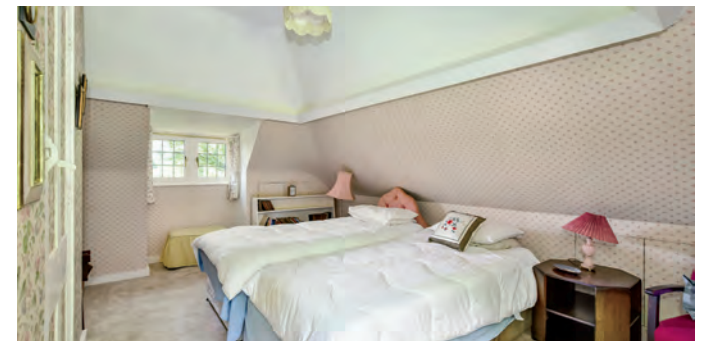
First Floor

The first floor offers three well-proportioned double bedrooms, each full of character and charm.

The first bedroom has wardrobes built into the eaves and views across the cricket field and further village.

Two more bedrooms also have built-in wardrobes. One has an area with a built-in dressing table and/or desk. These rooms, and landing, feature useful eaves storage, maintaining the cottage's enchanting aesthetic while offering practical solutions for everyday living.

Another bathroom has a WC, hand basin and bath with shower attachment.





Outside

The secluded, landscaped gardens are nothing short of magical; an idyllic sanctuary that perfectly complements the charm of the cottage. A generous patio provides the perfect spot for al fresco dining, with views to flower-filled borders featuring a cascading waterfall, a peaceful wildlife pond, and a rose and wisteria-clad pergola, each element contributing to a fairytale atmosphere for outdoor relaxation and entertaining.

Tucked away in the garden hollow, you'll discover a hidden gem – a private, indoor heated swimming pool, offering year-round enjoyment in a tranquil setting.

To the side of the property, a detached garage and spacious driveway ensure ample parking.

Location

The Thatch is located in the centre of the welcoming and sought-after village of Littlewick Green, known for its picturesque village green and cricket pitch, which add to its traditional countryside ambiance. The house is close to key local amenities – the Cricketers pub, the village hall, St John's church and a Montessori in the old village school. Despite its rural setting, The Thatch is a 10-minute drive to Maidenhead station, where the Elizabeth Line takes 30 minutes to Paddington and on to The City. Close to the M4 and the A404M link to the M40 gives access to the country's motorway system and the wider UK. For international travel, Heathrow Airport is within easy reach.

The nearby towns of Maidenhead, Marlow and Henley-on-Thames offer a wealth of shops, amenities and leisure activities. For those who appreciate fine dining, the nearest Michelin-starred restaurants are Heston Blumenthal's Fat Duck and Hind's Head and the Roux family's Waterside, all in Bray. The latter recently opened the less formal Roux at Skindles, on Maidenhead bridge. Tom Kerridge enhances Marlow's busy restaurant scene with the two-star Hand and Flowers, one-star Coach and the new Butchers' Tap and grill. A quick 25 minutes takes you to Raymond Blanc's two-star Le Manoir aux Quat' Seasons.

Services, Utilities & Property Information

Utilities: Water: South East Water, Sewerage: Thames Water

Gas: Liquid Petroleum Gas for the gas hob

Electricity: Octopus, with PV solar panels, uploading to the grid and batteries

Mobile Phone Coverage: EE, Three, O2, Vodaphone. 5G is predicted to be available around your location from the following providers: Three, O2, Vodaphone. We advise that you check with your provider.

Broadband Availability: FTTP, Superfast broadband with predicted highest available download speed 36 Mbps and highest available upload speed 6 Mbps. We advise that you check with your provider.

Construction Type: Brick

Garage Parking Spaces: 1

Off Road Parking Spaces: 3

Directions

Postcode: SL6 3QU what3words: gravitate.assets.overlaps

Tenure: Freehold

Local Authority: Royal Borough of Windsor and Maidenhead

Council Tax Band: G

EPC rating E

Viewing Arrangements

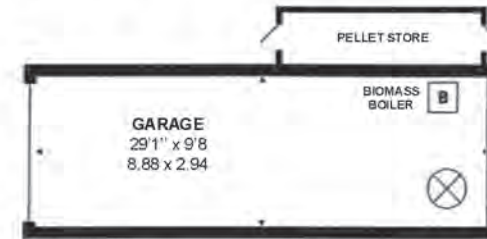
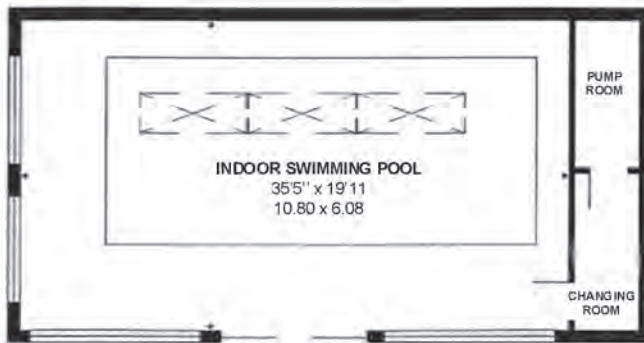
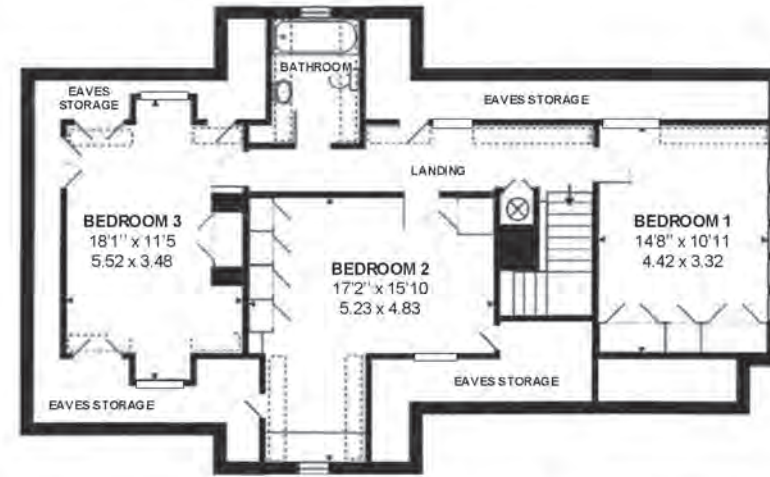
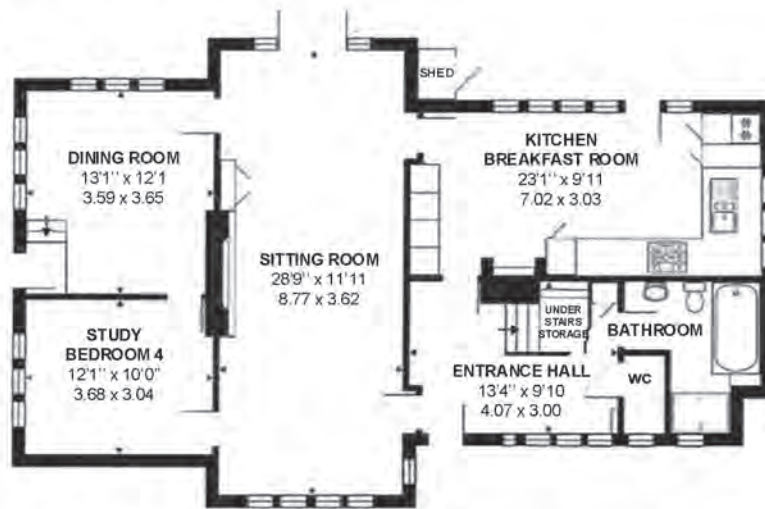
Strictly via the vendors sole agents Fine & Country Marlow and Maidenhead, Louis Byrne & Robert Cable on Tel Number +44 (0)1628 200 511

Website

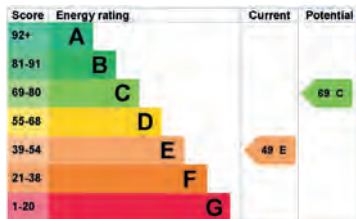
For more information visit Fine & Country Marlow and Maidenhead marlow@fineandcountry.com

Opening Hours:

Monday to Friday	9.00 am - 5.30 pm
Saturday - 9.00 am	4.30 pm
Sunday	By appointment only



The Thatch | Jubilee Road | Littlewick Green | Maidenhead SL6 3QU
 Approximate Area 2199 sqf – 204.3 sqm (excluding swimming pool, garage and store)
 garage and store 333 sqf – 30.8 sqm
 Indoor swimming pool 798 sqf – 74.2 sqm
 Dimensions are not to scale and provided for guidance only





ROBERT CABLE
PARTNER AGENT



LOUIS BYRNE
PARTNER AGENT

Fine & Country Marlow
Jubilee House, Third Avenue, Globe Park, Marlow, Buckinghamshire, SL7 1EY
01628 200 511 | marlow@fineandcountry.com

