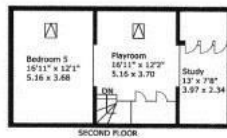
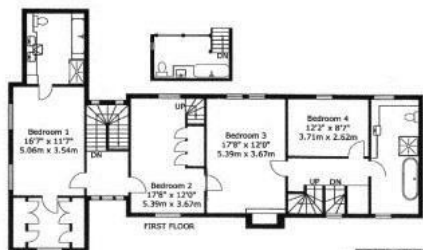




Howard Morley
& Sons

PER MONTH

£6,995 Per Month
Norley Lane




Approximate gross internal area:
 House: 275 sq m / 2960 sq ft
 Office: 14 sq m / 150 sq ft
TOTAL: 289 sq m / 3110 sq ft

This drawing is in accordance with
 Part 6 guidance. It is not to scale and
 is for illustration purposes only 2013

5 

4 

3 

Energy Efficiency Rating		Current	Potential
Very energy efficient - lower running costs			
(92 plus)	A		
(81-91)	B		
(69-80)	C		
(55-68)	D		
(39-54)	E		
(21-38)	F		
(1-20)	G		
Not energy efficient - higher running costs			
England & Wales		EU Directive 2002/91/EC 	



Agents Note: Whilst every care has been taken to prepare these particulars, they are for guidance purposes only. All measurements are approximate and are for general guidance purposes only and whilst every care has been taken to ensure their accuracy, they should not be relied upon and potential buyers/tenants are advised to recheck the measurements

Howard Morley & Sons

OFFICE ADDRESS
 276 High Street
 Guildford
 Surrey
 GU1 3JL

OFFICE DETAILS
 01483 575 304
 lettings@hmorley.co.uk
 hmorley.co.uk