



## Church Acre, Oakley - RG23 7GH

£600,000 offers over

VILLAGE LOCATION • 4 BEDROOMS • LUXURY FINISH THROUGHOUT • OFF ROAD DRIVEWAY PARKING FOR 2/3 CARS • GARAGE • OVERLOOKS GREEN SPACE • ENSUITE TO PRINCIPLE BEDROOM • VIDEO TOUR • SUITED ONWARD CHAIN • OPEN PLAN LIVING

01256 321777

[www.thepropertyexplorer.co.uk](http://www.thepropertyexplorer.co.uk)

the property  
**explorer**

Built in 2020 by Bewley Homes, this aesthetically pleasing four bedroom detached family home offers a modern, energy efficient lifestyle in a well regarded village setting. The house is well balanced and easy to live in, with a layout designed around everyday family life. Positioned within the sought after Church Acre development, the property enjoys a peaceful cul de sac setting while still being within walking distance of the village centre. Here you will find a range of useful amenities including a butcher, pharmacy, convenience stores and a traditional pub, along with infant and junior schools, parks and a well used recreation ground with sports clubs. For those needing to travel, there are strong road and transport links nearby, making it easy to reach surrounding towns and commuter routes. NB. The sellers have identified an onward purchase, allowing for a straightforward move with no onward chain complications.

Council Tax band: F

Tenure: Freehold



- › VILLAGE LOCATION
- › 4 BEDROOMS
- › LUXURY FINISH THROUGHOUT
- › OFF ROAD DRIVEWAY PARKING FOR 2/3 CARS
- › GARAGE
- › OVERLOOKS GREEN SPACE
- › ENSUITE TO PRINCIPLE BEDROOM
- › VIDEO TOUR
- › SUITED ONWARD CHAIN
- › OPEN PLAN LIVING





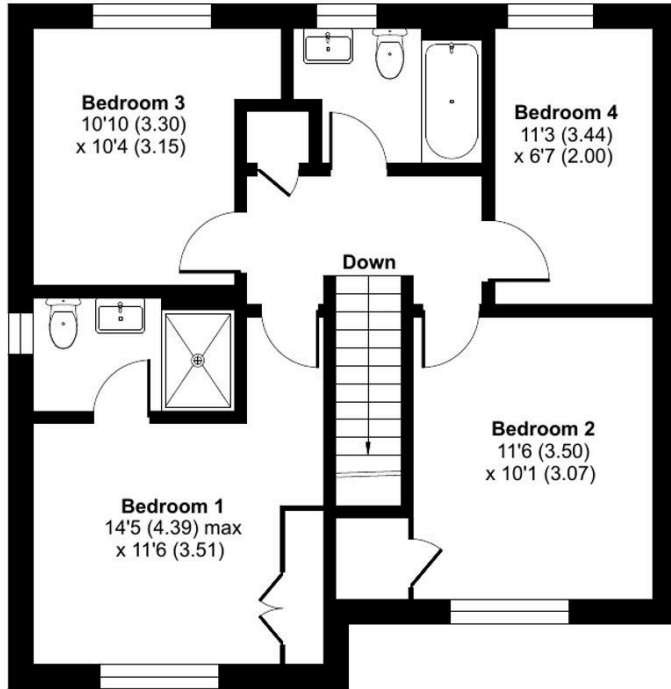
# Church Acre, Oakley, Basingstoke, RG23

Approximate Area = 1231 sq ft / 114.3 sq m

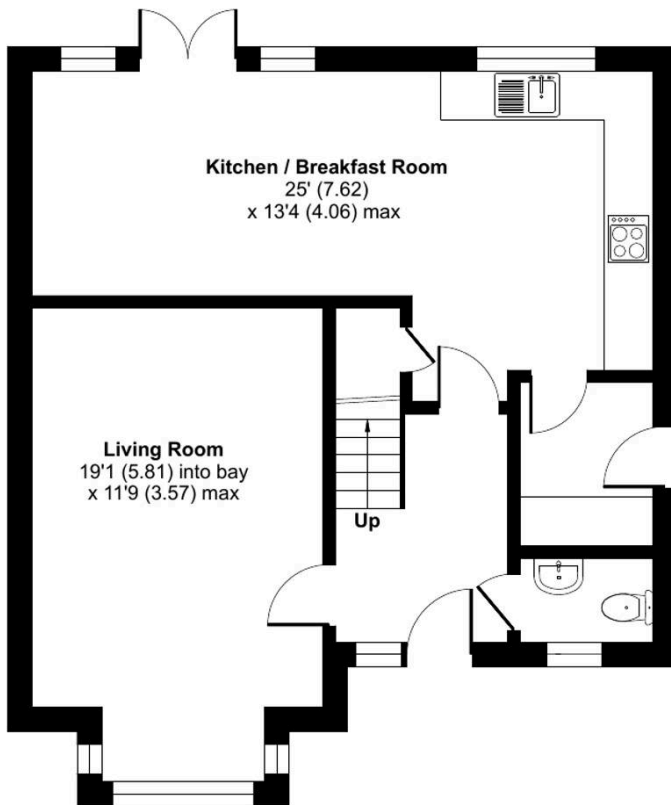
Garage = 197 sq ft / 18.3 sq m

Total = 1428 sq ft / 132.6 sq m

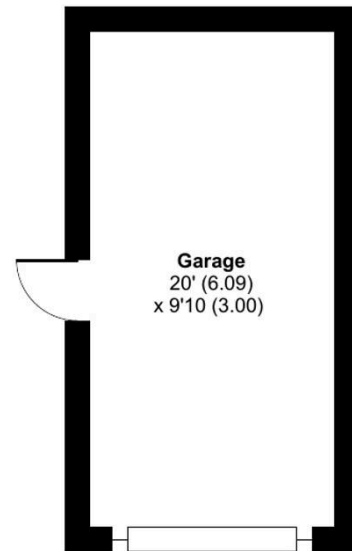
For identification only - Not to scale



FIRST FLOOR



GROUND FLOOR



GARAGE



Floor plan produced in accordance with RICS Property Measurement 2nd Edition, Incorporating International Property Measurement Standards (IPMS2 Residential). © nchecom 2026. Produced for Property Explorer. REF: 1453997