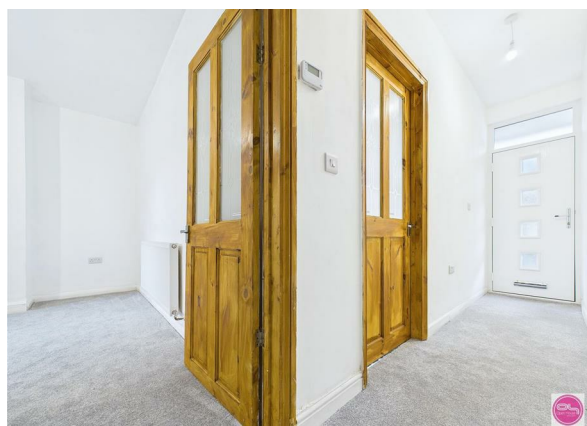
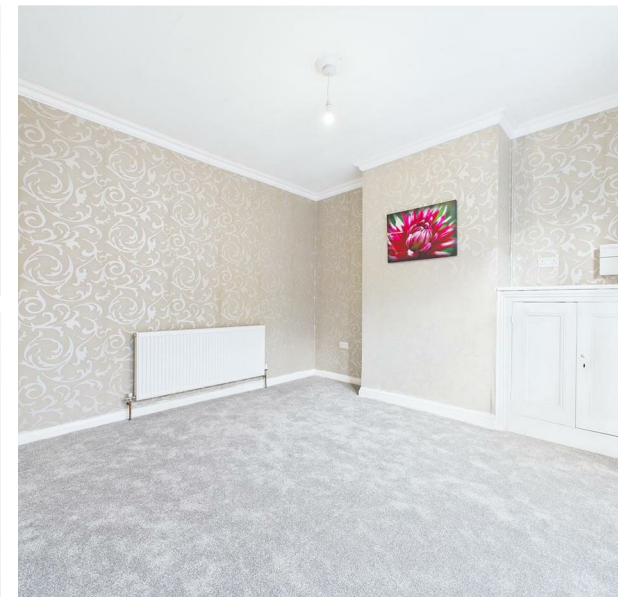
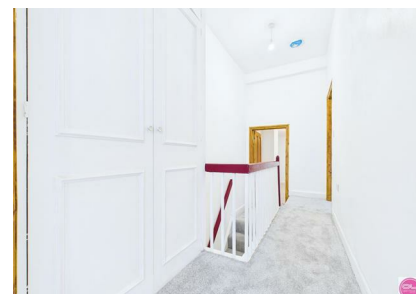
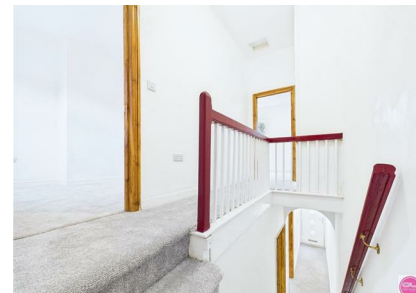


Derby Street, Burton-On-Trent, DE14 2LD

£160,000

Council Tax Band: A

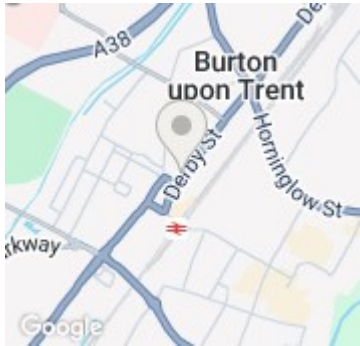
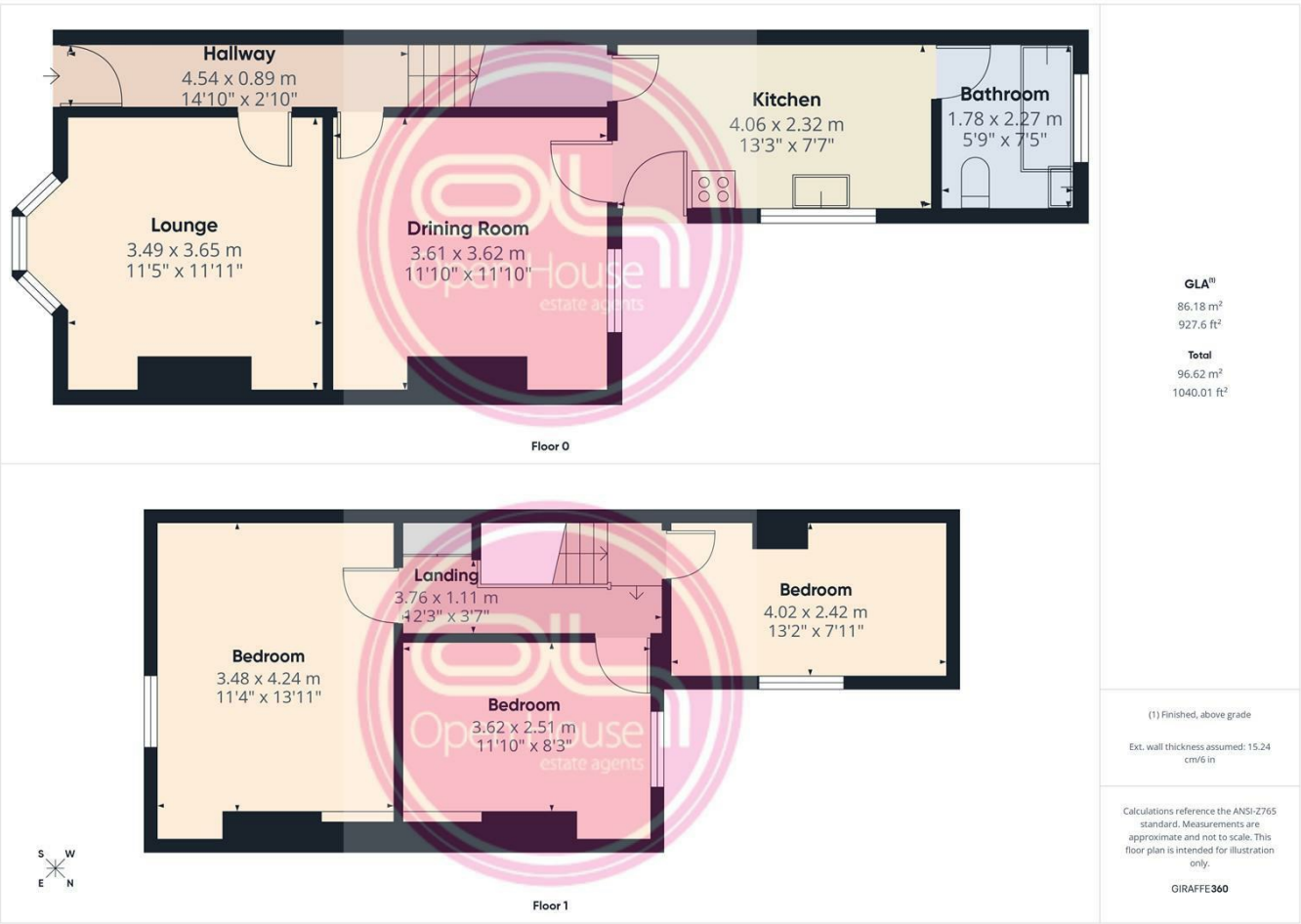


Situated on Derby Street, just a short walk from Burton town centre, this refurbished three-bedroom terraced home offers spacious accommodation across two floors with a contemporary interior finish. The property has benefitted from a comprehensive renovation programme, including new windows, full rewiring, central heating installation, brand-new carpets, redecoration. The home provides two excellent reception rooms, a modern ground floor bathroom, a well-equipped kitchen, and a private rear garden.

Derby Street is a highly convenient location for first-time buyers, young families or investors, providing excellent access to major routes, local bus connections, supermarkets, schools, medical services and the railway station. Burton town centre, and leisure amenities are all within easy reach.



Open House Burton & Swadlincote



Energy Efficiency Rating		
	Current	Potential
Very energy efficient - lower running costs		
(92 plus) A		
(81-91) B		86
(69-80) C	69	
(55-68) D		
(39-54) E		
(21-38) F		
(1-20) G		
Not energy efficient - higher running costs		
England & Wales	EU Directive 2002/91/EC	