



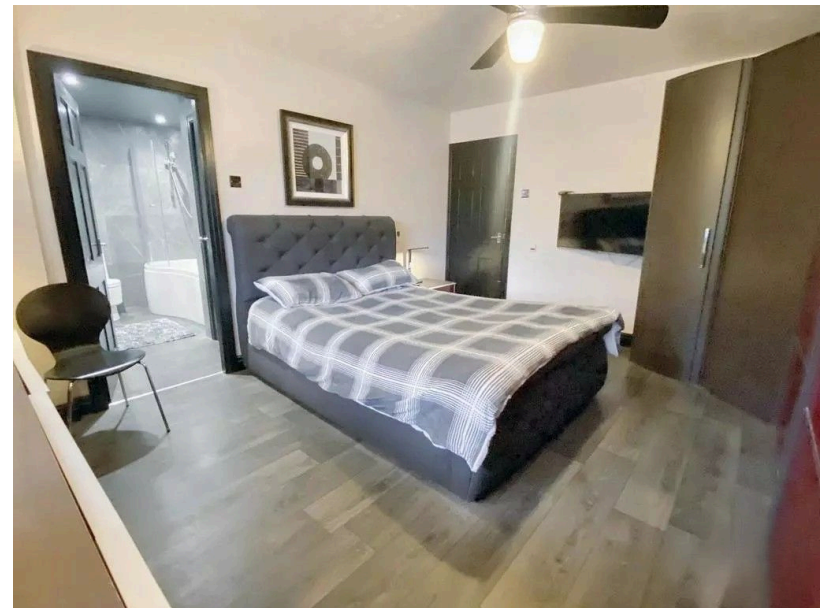
412 Rochdale Road, Royton, OL2 6TS

£420,000

🛏 6 🍳 3 🛋 2



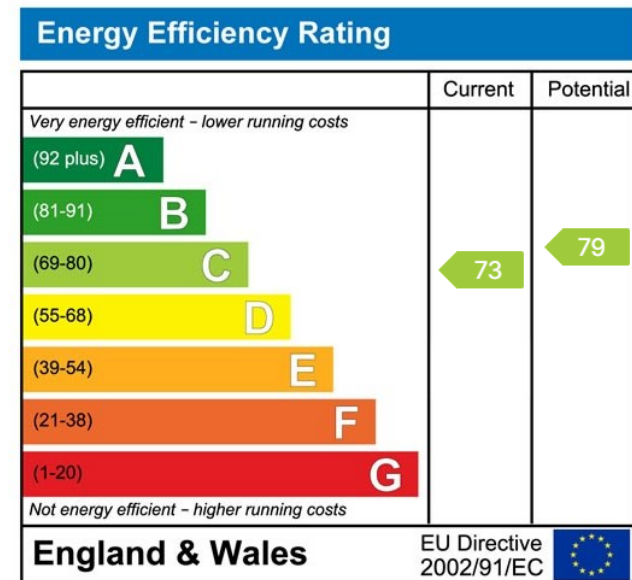
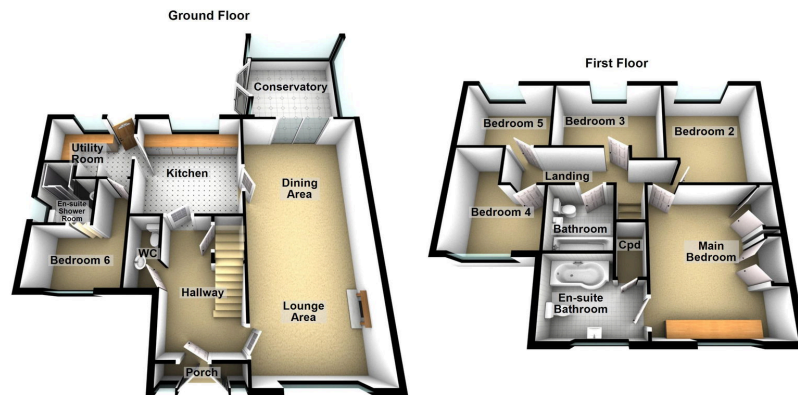
- Detached Family Home
- Three Bathrooms
- Utility Room
- Close To Royton Centre
- EPC: C
- Six Bedrooms
- Large Lounge/Dining Room
- Ground Floor Bedroom & Shower Room
- Part Exchange Considered



Offered for sale is this good size six bedroom detached family home located in Royton. This lovely home offers superb versatile living accommodation. Close to Tandle Hill Country Park and Royton centre.

Floor plan comprising: Entrance porch, large hallway, massive lounge/dining room, WC, kitchen, utility room, conservatory, ground floor bedroom and en suite shower room. To the first floor there is a main bedroom with en suite bathroom, four further bedrooms and a family bathroom. Externally there is an ample driveway to the front and an enclosed garden to the rear. Good quality local schools within easy reach as are motorway networks.

Contact us today to arrange a viewing. Part Exchange considered.



Chadderton Office

509 Middleton Road,
Chadderton, Oldham,
OL9 9SH

chadderton@kirkham-property.co.uk
t: 0161 626 5688