



## Flat 27, Warwick Lodge Shoot Up Hill

, London, NW2 3PE

£2,800 Per month

Nestled in the vibrant area of Shoot Up Hill, London, this charming flat offers a delightful blend of comfort and convenience. With three well-proportioned bedrooms, this property is ideal for families or professionals seeking a spacious living environment. The flat features a welcoming reception room, perfect for relaxation or entertaining guests.

The two bathrooms provide ample facilities for residents, ensuring privacy and ease during busy mornings. The property comes furnished, allowing for a seamless move-in experience, as you can settle in without the hassle of purchasing new furniture.

One of the standout features of this flat is its proximity to local transport links, making commuting a breeze. Whether you are heading into the heart of London for work or exploring the city's many attractions, you will find that the nearby station offers excellent connectivity.

This flat is not just a place to live; it is a home that offers both comfort and accessibility in one of London's lively neighbourhoods. If you are looking for a well-appointed property that meets your needs, this flat on Shoot Up Hill could be the perfect choice for you.

### Viewing

Please contact us on 020 3198 4517 if you wish to arrange a viewing appointment for this property or require further information.



3



2



1



C

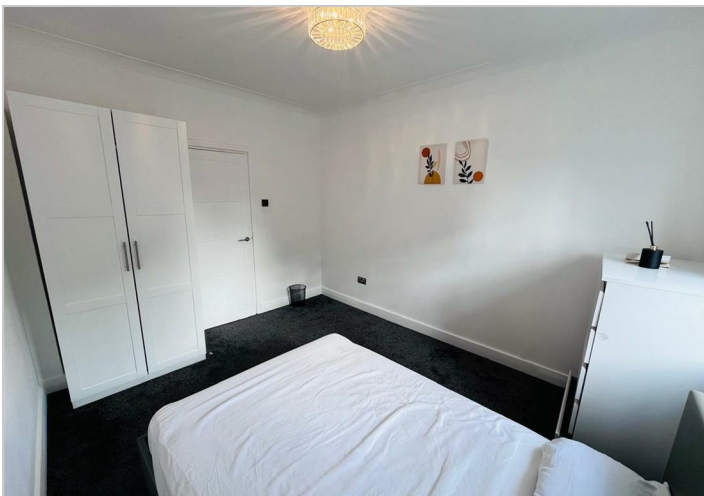
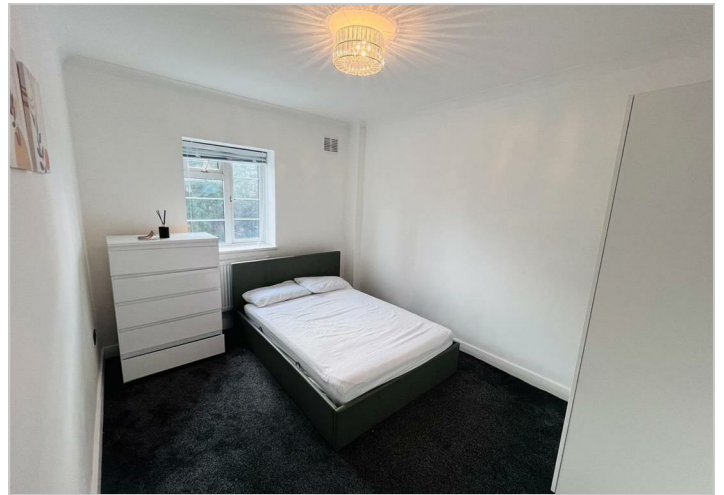
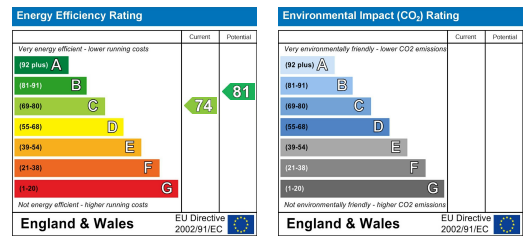
## Floor Plan



## Area Map



## Energy Efficiency Graph



These particulars, whilst believed to be accurate are set out as a general outline only for guidance and do not constitute any part of an offer or contract. Intending purchasers should not rely on them as statements of representation of fact, but must satisfy themselves by inspection or otherwise as to their accuracy. No person in this firm's employment has the authority to make or give any representation or warranty in respect of the property.