



Knights Way

Headcorn, Ashford TN27 9TY

- GUIDE PRICE £200,000 - £210,000
- Two DOUBLE Bedrooms
- Gas Central Heating & Double Glazing Throughout
- Village Cul De Sac Location
- Spacious First Floor Maisonette
- Lounge/Dining Room
- Communal Gardens & Parking Surrounding
- Private Mature Rear Garden

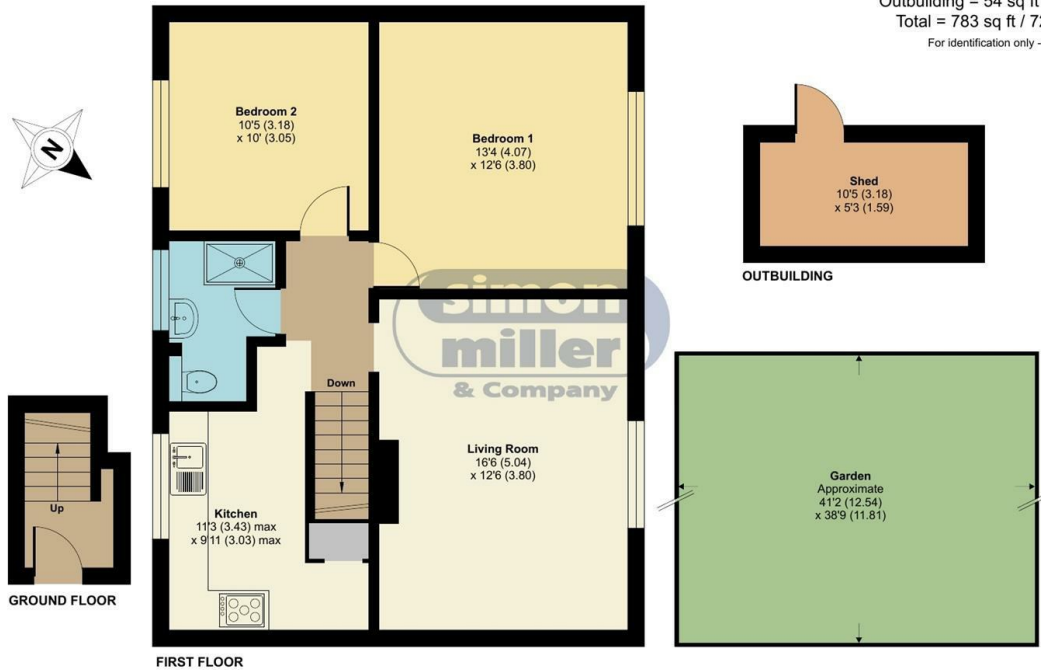
Price Guide £200,000 Leasehold



Local Authority Maidstone
Council Tax Band B
EPC Rating C

Knights Way, Headcorn, TN27

Approximate Area = 729 sq ft / 67.7 sq m
Outbuilding = 54 sq ft / 5 sq m
Total = 783 sq ft / 72.7 sq m
For identification only - Not to scale



Floor plan produced in accordance with RICS Property Measurement 2nd Edition, Incorporating International Property Measurement Standards (IPMS2 Residential). © n3chem 2025. Produced for Simon Miller & Company. REF: 1372712



Maidstone & The Weald Office

11 Colman House, Colman Parade, King
Street, Maidstone, Kent, ME14 1DJ

Contact

01622 691255
maidstonesales@simonmiller.co.uk

Agents Note: Whilst every care has been taken to prepare these particulars, they are for guidance purposes only. All measurements are approximate and for general guidance purposes only and whilst every care has been taken to ensure accuracy, they should not be relied upon and potential buyers/tenants are advised to recheck the measurements.