



## SUNNYSIDE

Wimbledon, SW19



# A CONTEMPORARY MASTERPIECE

Exceptional newly built, five bedroom detached house for sale with off street parking, near to the heart of Wimbledon Village and Wimbledon town centre.



Local Authority: London Borough of Merton

Council Tax band: H

Tenure: Freehold

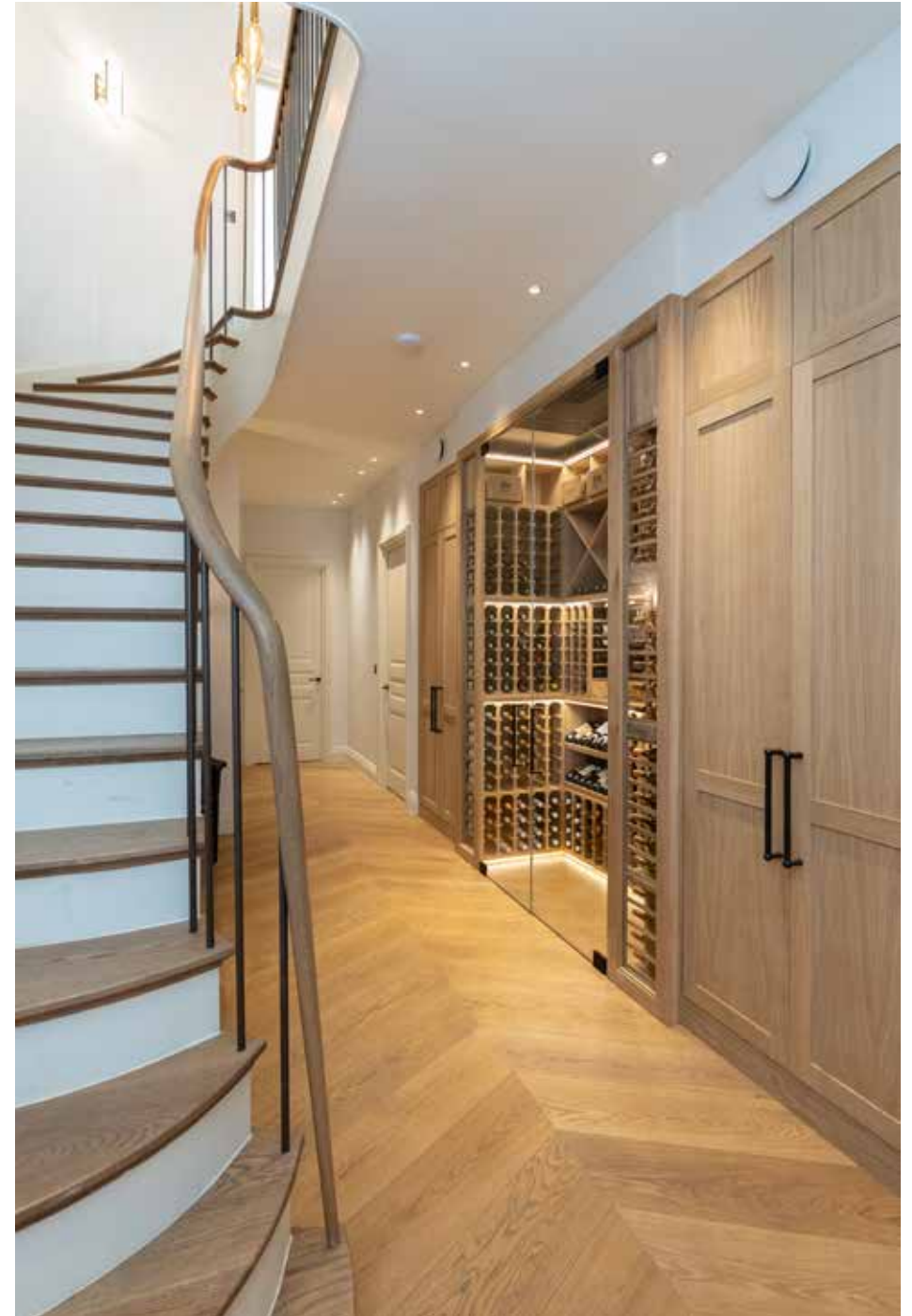
Guide Price: £6,000,000



## ABOUT THE PROPERTY

A truly outstanding, newly built five-bedroom detached family house, superbly located on one of Wimbledon Village's most charming and sought-after roads. Meticulously designed and finished to an exceptional standard, this remarkable home represents one of the finest residences to have come to market in recent years.

Built in a classic contemporary style, the house combines timeless elegance with a beautifully executed modern interior. At its heart is a striking central staircase, rising through all four floors and naturally lit from above by expansive rooflights – creating a sense of light and architectural drama throughout.





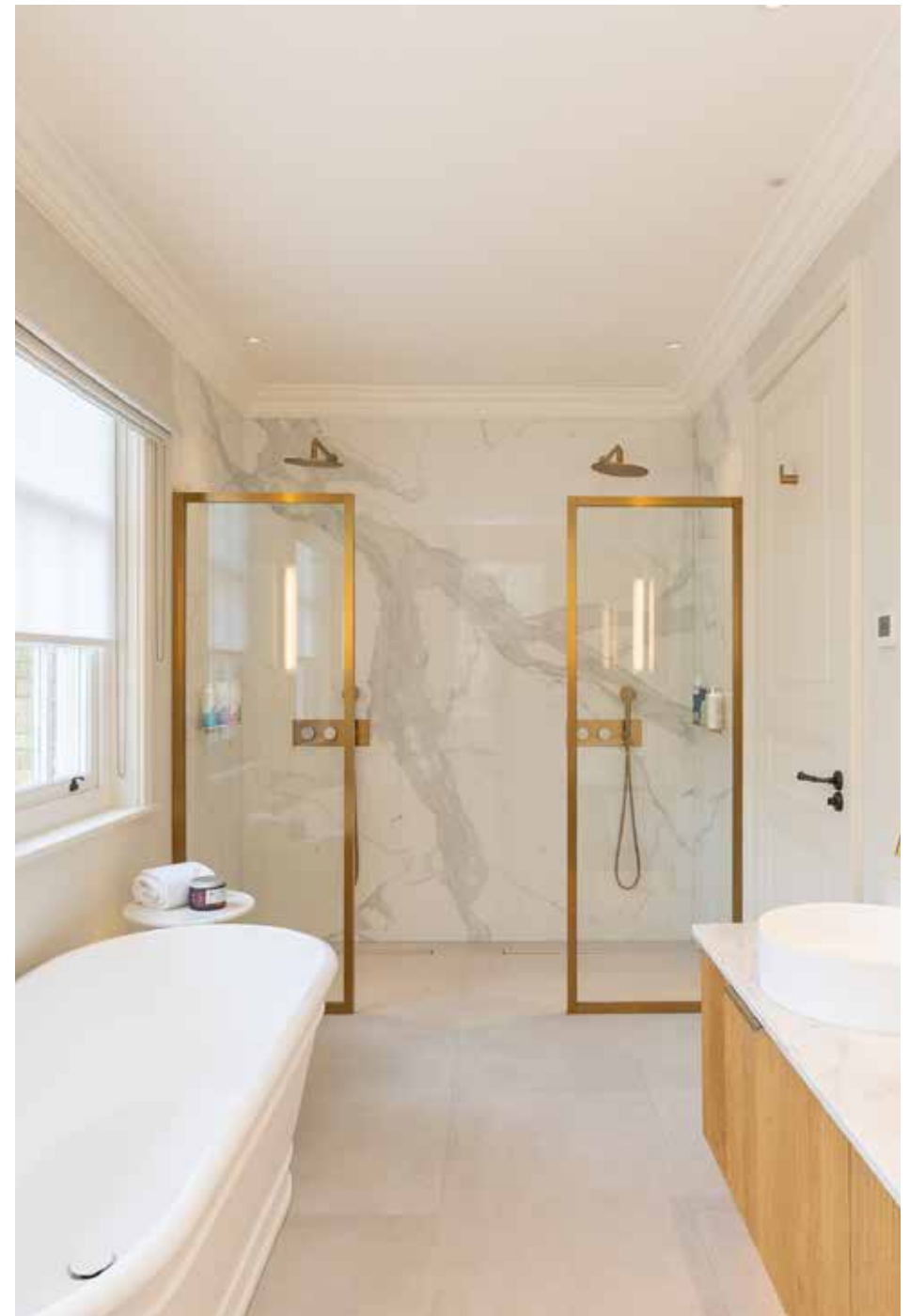


## METICULOUSLY DESIGNED

The impressive central entrance hall leads into the principal reception spaces. The dual-aspect sitting room runs the full depth of the house and connects seamlessly with the bespoke, hand-painted kitchen – both rooms featuring floor-to-ceiling slimline sliding glass doors opening onto the landscaped garden. The kitchen is fitted with high-end appliances, Arabescato marble worktops, and a generous central island with breakfast bar. The formal dining room, complete with Crittall-style doors overlooking the feature staircase, provides elegant space for entertaining up to twelve guests in comfort. To the rear, two off-street parking spaces provide private access via a gate leading into the handy boot room and ground floor cloakroom. On the first floor, the stunning principal suite includes a luxurious en suite bathroom with double shower, and a beautifully fitted dressing room with bespoke hardwood and upholstered cabinetry. A second bedroom on this level enjoys garden views, a vaulted ceiling, generous fitted wardrobes and a stylish en suite. The top floor features two further beautifully appointed bedrooms, both with en suite shower rooms and bespoke finishes.

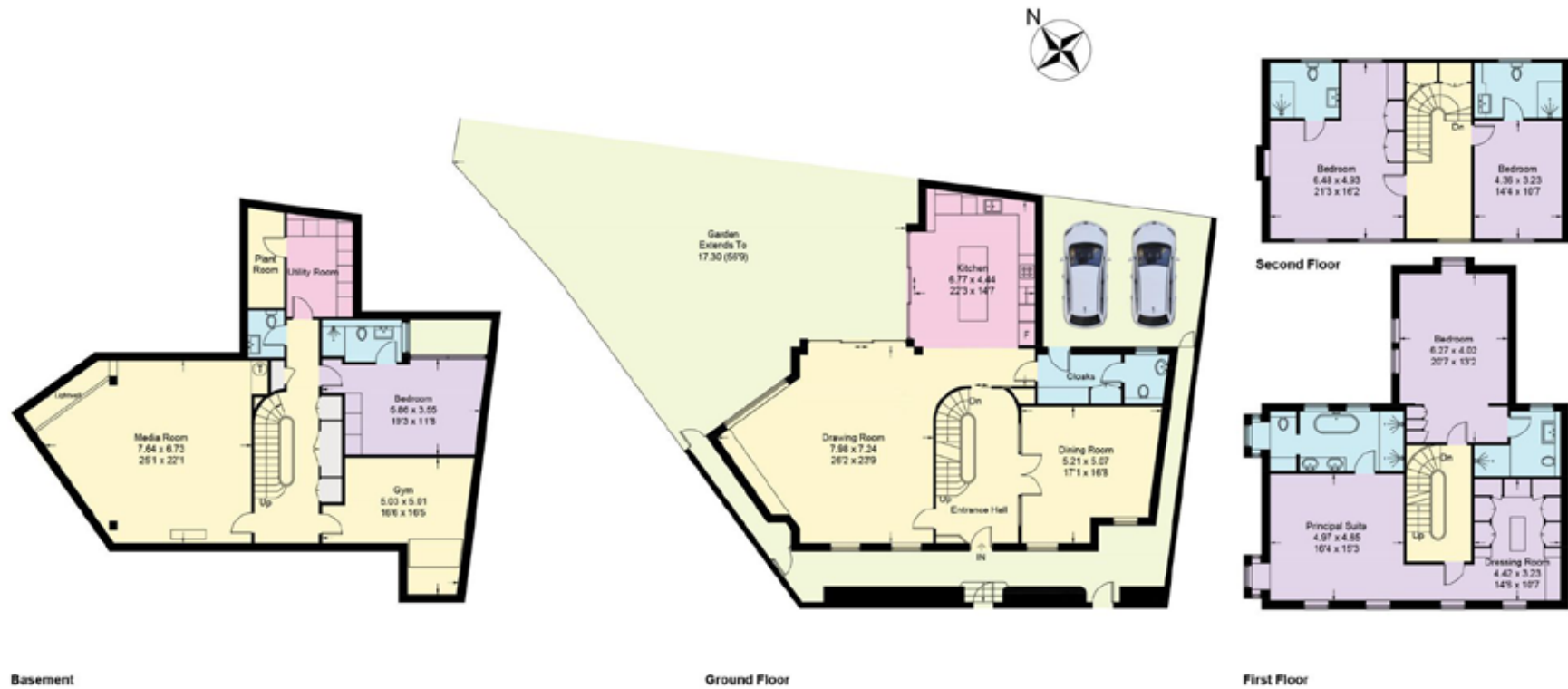


The lower ground floor is designed for leisure and lifestyle, featuring a magnificent cinema and games room with bespoke bar and floor-to-ceiling glass doors opening into a large lightwell. Additional amenities include a well-equipped gym, a temperature-controlled 500-bottle wine cellar, a spacious double bedroom with en suite shower room, cloakroom, utility room, and plant room. Technologically advanced, the house benefits from underfloor heating throughout, a heat recovery ventilation system, and a Banham video entry system with integrated CCTV and alarm. To the rear lies a beautifully landscaped, walled garden extending over 50 feet – paved and planted beneath the canopy of a majestic oak tree. Elegant and low maintenance, it provides an ideal setting for sophisticated London entertaining.









Approximate Gross Internal Area = 424.8 sq m / 4572 sq ft

This plan is for layout guidance only. Not drawn to scale unless stated. Windows and door openings are approximate. Whilst every care is taken in the preparation of this plan, please check all dimensions, shapes and compass bearings before making any decisions reliant upon them. (ID767266)

We would be delighted  
to tell you more.

**Christopher Burton FNAEA**  
+44 20 3815 9417  
chris.burton@knightfrank.com

**Knight Frank Wimbledon**  
58 High Street, London  
SW19 5EE

[knightfrank.co.uk](https://knightfrank.co.uk)

Your partners in property

1. Particulars: These particulars are not an offer or contract, nor part of one. You should not rely on statements given by Knight Frank in the particulars, by word of mouth or in writing ("information") as being factually accurate about the property, its condition or its value. Neither Knight Frank nor any joint agent has any authority to make any representations about the property, and accordingly any information given is entirely without responsibility on the part of Knight Frank. 2. Material Information: Please note that the material information is provided to Knight Frank by third parties and is provided here as a guide only. While Knight Frank has taken steps to verify this information, we advise you to confirm the details of any such material information prior to any offer being submitted. If we are informed of changes to this information by the seller or another third party, we will use reasonable endeavours to update this as soon as practical. 3. Photos, Videos etc: The photographs, property videos and virtual viewings etc. show only certain parts of the property as they appeared at the time they were taken. Areas, measurements and distances given are approximate only. 4. Regulations etc: Any reference to alterations to, or use of, any part of the property does not mean that any necessary planning, building regulations or other consent has been obtained. A buyer must find out by inspection or in other ways that these matters have been properly dealt with and that all information is correct. 5. Fixtures and fittings: A list of the fitted carpets, curtains, light fittings and other items fixed to the property which are included in the sale (or may be available by separate negotiation) will be provided by the Seller's Solicitors. 6. VAT: The VAT position relating to the property may change without notice. 7. To find out how we process Personal Data, please refer to our Group Privacy Statement and other notices at <https://www.knightfrank.com/legals/privacy-statement>.

Particulars dated April 2025. Photographs and videos dated April 2025. All information is correct at the time of going to print. Knight Frank is the trading name of Knight Frank LLP. Knight Frank LLP is a limited liability partnership registered in England and Wales with registered number OC305934. Our registered office is at 55 Baker Street, London W1U 8AN. We use the term 'partner' to refer to a member of Knight Frank LLP, or an employee or consultant. A list of members names of Knight Frank LLP may be inspected at our registered office. If you do not want us to contact you further about our services then please contact us by either calling 020 3544 0692, email to [marketing.help@knightfrank.com](mailto:marketing.help@knightfrank.com) or post to our UK Residential Marketing Manager at our registered office (above) providing your name and address.