



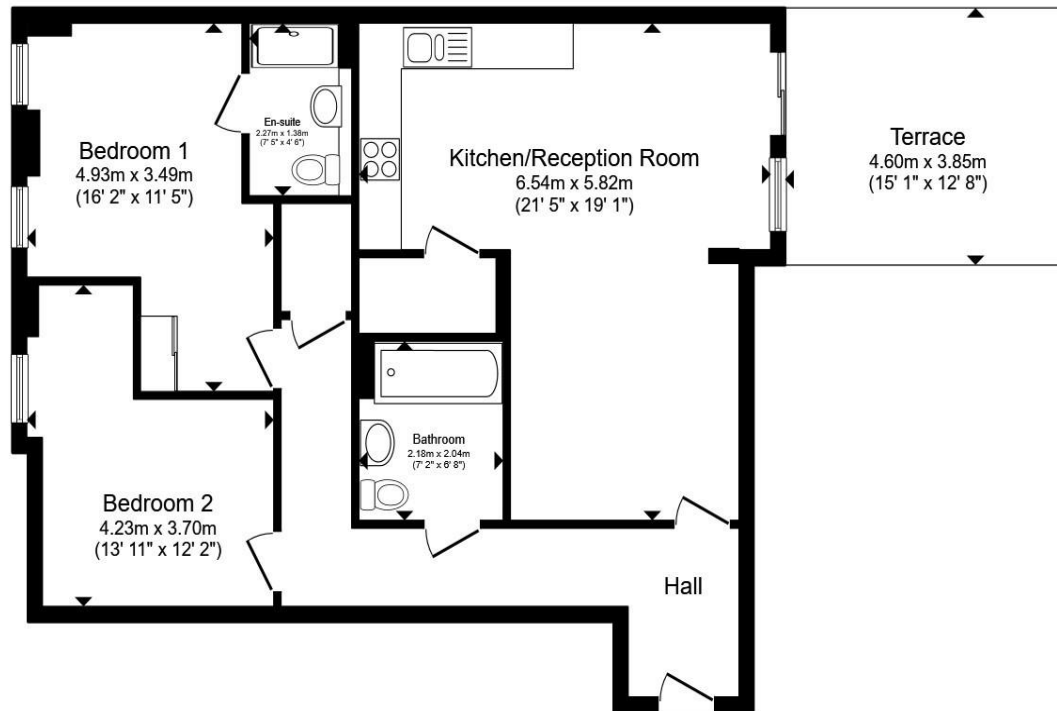
Millwards Court, Greyhound Parade, London SW17 0JQ

welcome to

Millwards Court, Greyhound Parade, London

An exemplary two bed, two bath, upper ground floor, bright apartment located within the exclusive Wimbledon Stadium development, with private sunny terrace.





Ground Floor

Total floor area 79.9 m² (860 sq.ft.) approx

This floor plan is for illustrative purposes only. It is not drawn to scale. Any measurements, floor areas (including any total floor area), openings and orientation are approximate. No details are guaranteed, they cannot be relied upon for any purpose and they do not form part of any agreement. No liability is taken for any error, omission or misstatement. A party must rely upon its own inspection(s). Powered by www.propertybox.io



An exemplary two bed, two bath, upper ground floor, bright apartment located within the exclusive Wimbledon Stadium development, with private sunny terrace.

The property benefits from a high specification throughout, with excellent presentation and open-plan living space leading to a westerly facing terrace. The large reception room is bright and airy with direct access onto a private terrace. The property also comes with a private parking space.

This popular development has 24-hour concierge, a lift, video entry system and is located within close proximity of popular amenities.

Transport links include Earlsfield & Haydons Road mainline stations, along with Tooting Bec underground station.

welcome to

Millwards Court, Greyhound Parade, London

- Exclusive Wimbledon Stadium Development
- Large Private Terrace
- 24-Hour Concierge, Lift and Private Parking
- High Specification Throughout
- Close to Popular Amenities

Tenure: Leasehold EPC Rating: B

Council Tax Band: D Service Charge: 3996.00

Ground Rent: Ask Agent

This is a Leasehold property with details as follows; Term of Lease 250 years from 01 Jan 2018. Should you require further information please contact the branch. Please Note additional fees could be incurred for items such as Leasehold packs.

guide price

£525,000



Please note the marker reflects the
postcode not the actual property

view this property online barnardmarcus.co.uk/Property/EAR105309



Property Ref:
EAR105309 - 0004

1. MONEY LAUNDERING REGULATIONS Intending purchasers will be asked to produce identification documentation at a later stage and we would ask for your co-operation in order that there is no delay in agreeing the sale. 2. These particulars do not constitute part or all of an offer or contract. 3. The measurements indicated are supplied for guidance only and as such must be considered incorrect. Potential buyers are advised to recheck measurements before committing to any expense. 4. We have not tested any apparatus, equipment, fixtures or services and it is in the buyers interest to check the working condition of any appliances. 5. Where an EPC, or a Home Report (Scotland only) is held for this property, it is available for inspection at the branch by appointment. If you require a printed version of a Home Report, you will need to pay a reasonable production charge reflecting printing and other costs. 6. We are not able to offer an opinion either written or verbal on the content of these reports and this must be obtained from your legal representative. 7. Whilst we take care in preparing these reports, a buyer should ensure that his/her legal representative confirms as soon as possible all matters relating to title including the extent and boundaries of the property and other important matters before exchange of contracts.

Barnard Marcus is a trading name of Sequence (UK) Limited which is registered in England and Wales under company number 4268443, Registered Office is Cumbria House, 16-20 Hockliffe Street, Leighton Buzzard, Bedfordshire, LU7 1GN. VAT Registration Number is 500 2481 05.



barnard marcus



020 8879 7222



Earlsfield@barnardmarcus.co.uk



525 Garratt Lane, London, SW18 4SR



barnardmarcus.co.uk