



Deals Gateway, SE13

£325,000

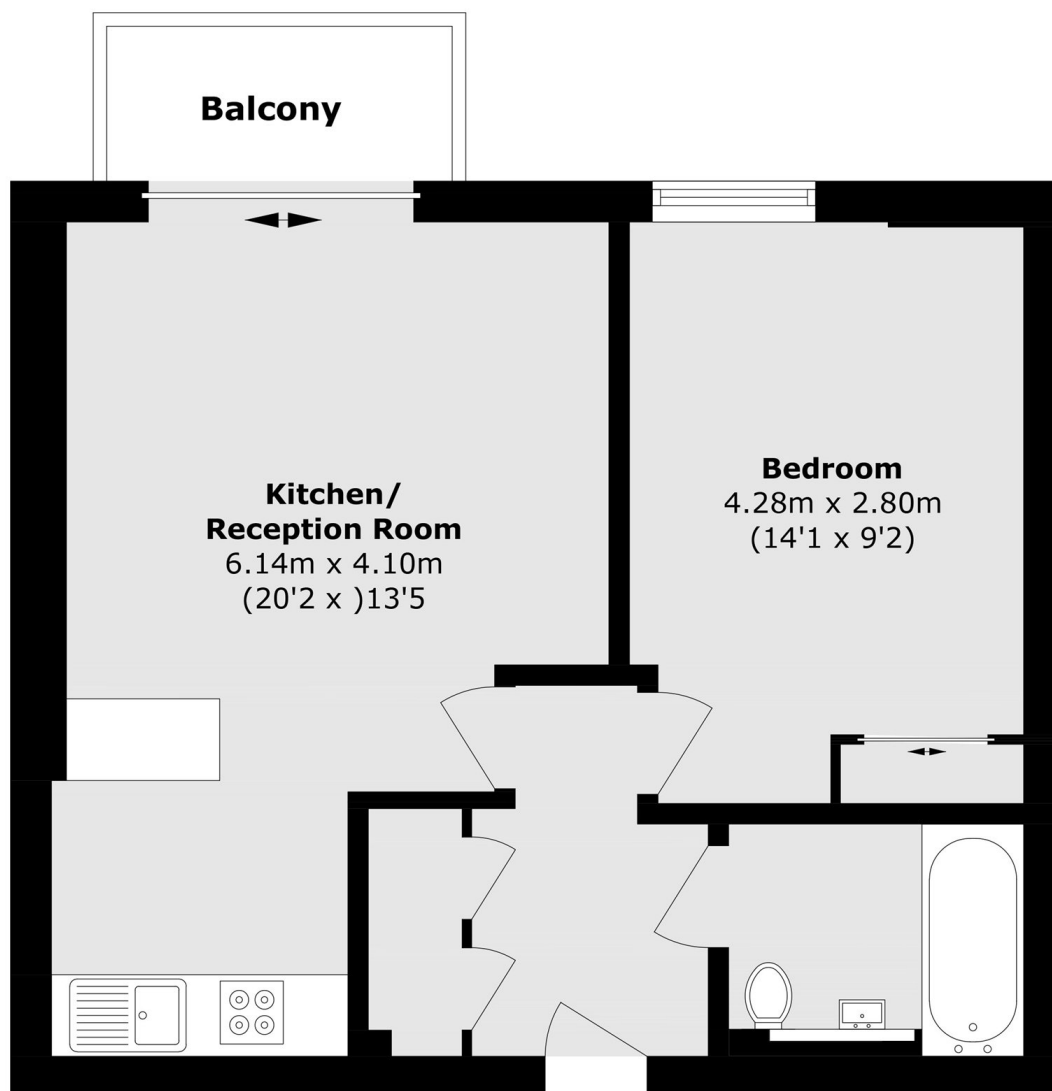
A beautifully presented bright and airy one bedroom apartment which has been finished to high standard and benefits from a private balcony and access to the gym and swimming lane. This would make an ideal first purchase or BTL investment.

California Building is perfectly located next to Deptford Bridge DLR, giving access to Canary Wharf in 15 minutes and Bank under 30 minutes. Deptford high street is close by with its array of shops, restaurants and amenities, as well as both Greenwich and Blackheath. The town centre is also within close proximity, where you can enjoy a variety of shops, restaurants, Greenwich Market, The Royal Park, and riverboat service.

Features

- Modern Apartment
- Moments From The DLR
- Private Balcony
- Sought After Location
- Ideal First Purchase
- Finished To A High Standard

Deals Gateway, London, SE13



Total area (approx.): 43.9 sq. m (472.5 sq. ft)

Balcony area (approx.): 2.8 sq. m (30.1 sq. ft)