

Property ref: 171544

Nightingale Way, Reading, RG30 1EX

£1,600 PCM

HASLAM'S
Lettings



We are pleased to present this contemporary 2-bedroom, 2-bathroom ground floor property built by Bellway Homes that boasts convenience and comfort. Situated close to amenities, this home offers the perfect blend of accessibility and tranquillity. Featuring gas central heating, and plenty of natural light, this property ensures a warm and inviting atmosphere throughout. The property also offers an outside patio/garden area. Additionally, the property comes with integrated kitchen appliances, adding a touch of modernity and convenience to the living space.

Reading Borough Council tax band C.

Available 26/08/2026

*Fees For Assured Periodic Tenancies: when you rent a property from us you will be required to pay a sum equivalent to one weeks' rent for a holding deposit. Upon successful application, this amount will be off set against your first months' rent. You will also be required to pay a security deposit equivalent to 5 weeks' rent which will be held and protected in line with Deposit legislation. For more information about our fees please visit: www.haslams.net
Fees for all other tenancies (Non Housing Act Tenancies / Company Lets): when you rent a property from us we will charge you a one-off fee per property. This charge is the equivalent of 15 days of the monthly rental charge (+VAT) with a minimum fee of £450 (inc.VAT) up to a maximum of £650 (inc.VAT). Other fees may apply depending on your circumstances.

- Two double bedrooms; Master with en-suite shower room
- Further family bathroom
- Fully integrated modern kitchen
- Gas central heating; EPC rating B
- Furnished; Allocated parking
- Managed by HASLAM'S

0118 960 1055

lettings@haslams.net www.haslams.net

Haslams Estate Agents Ltd, 159 Friar Street, Reading, Berkshire, RG1 1HE

Broadband/Mobile Info: Connections available. For an indication of specific speeds and supply of Broadband and Mobile, we advise applicants go to the Ofcom website Broadband and Mobile Coverage Checker.

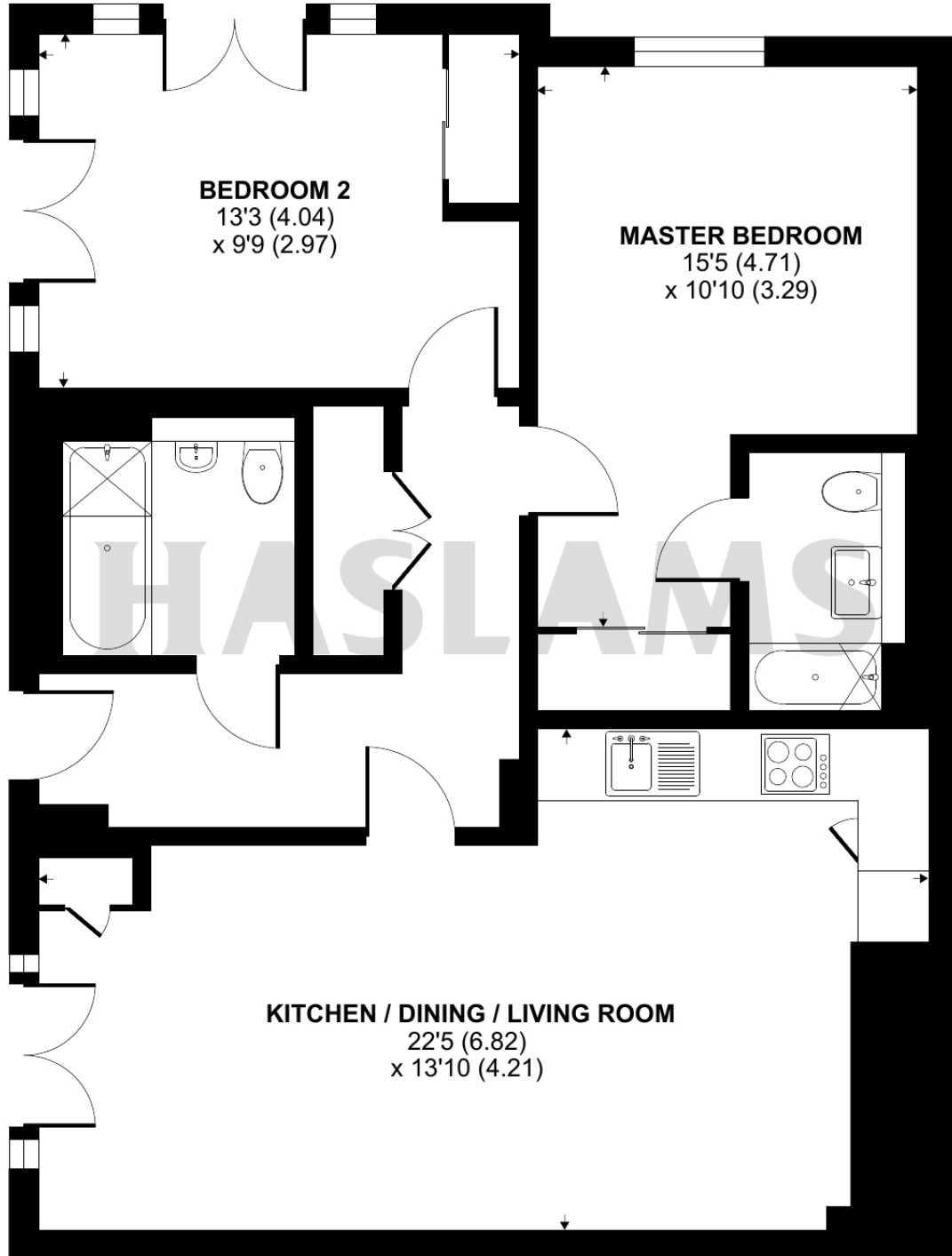




Nightingale Way, Reading, RG30

Approximate Area = 786 sq ft / 73 sq m

For identification only - Not to scale



GROUND FLOOR

 Floor plan produced in accordance with RICS Property Measurement 2nd Edition, Incorporating International Property Measurement Standards (IPMS2 Residential). © nchecom 2025. Produced for Haslamss. REF: 1309285