



Modern One Bedroom Cottage with Allocated Parking Space in Central Tunbridge Wells

This modern one double bedroom cottage sits in a private mews off the Camden Road. The property benefits from an allocated parking space outside the front door. The open plan kitchen-living room is bright and airy. The kitchen is well equipped with electric hob and fan oven, under counter fridge, separate under counter freezer and washer dryer. There is a modern bathroom with full length bath with shower over. Double bedroom with storage cupboard. Fantastic location with the centre of Tunbridge Wells on your doorstep. Double glazing throughout, modern electric heating, EPC band D. Council tax band B. Available for long term let. Viewing Highly Recommended.





ACCOMMODATION

Open Plan Living Room-Kitchen 15' 10" x 14' 2" (4.82m x 4.33m)

Bright and airy open plan living room-kitchen. Wood laminate floors, with windows on two sides overlooking the mews. Skylight in modern pitched ceiling makes room very light. Modern fitted kitchen with grey gloss splash-back, single bowl stainless steel sink with mixer tap over. Electric hob and fan oven. Washer dryer, separate under-counter fridge and freezer.

Family Bathroom 6' 11" x 5' 6" (2.1m x 1.67m)

Modern family bathroom with pedestal basin with mixer tap, WC and bath with shower over. Stainless steel towel rail.

Master Bedroom 14' 3" x 8' 6" (4.34m x 2.58m)

Good sized double bedroom with window to front of property. Room for wardrobe. Contains corner cupboard with hot water cylinder.

EPC & Council Tax

Energy Performance Certificate Band D. Tunbridge Wells council tax band B, £1821.24 for 2025-26

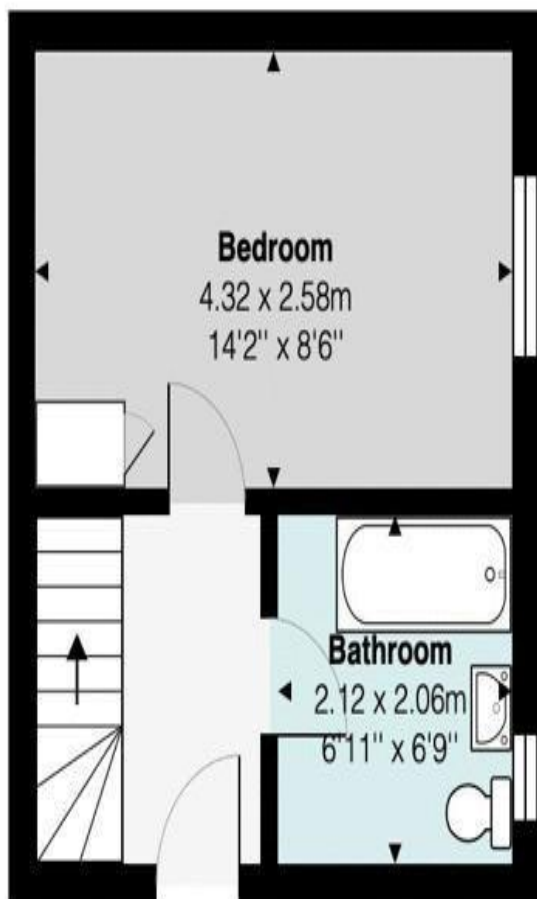
Location

The house sits in a small private mews, just off the Camden Road. The St Kilda coffee shop is close by, and Royal Victoria Shopping centre is on the opposite side of the street. Tunbridge Wells mainline station is 0.4 miles away or a 10 minute walk. There are many shops, restaurants and cafes a short walk away.

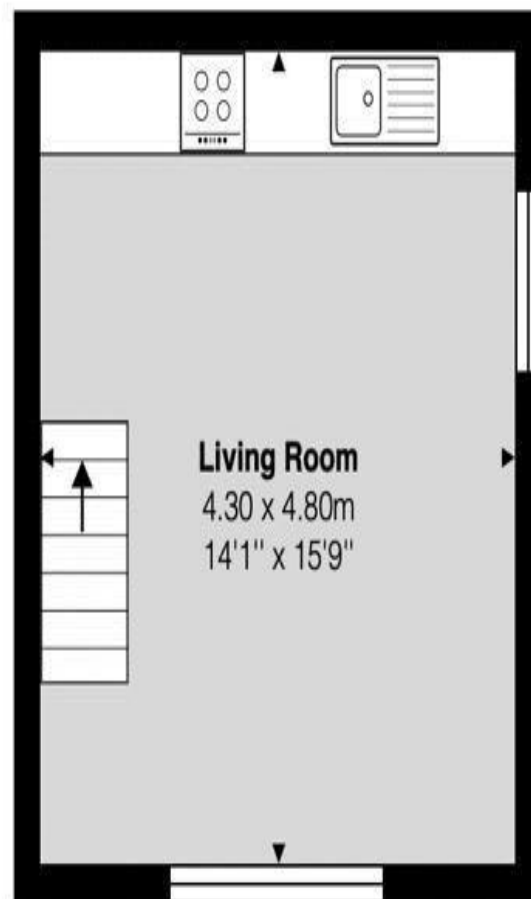




FLOOR PLAN



Ground Floor



First Floor

Total Area: 41.4 m² ... 445 ft²

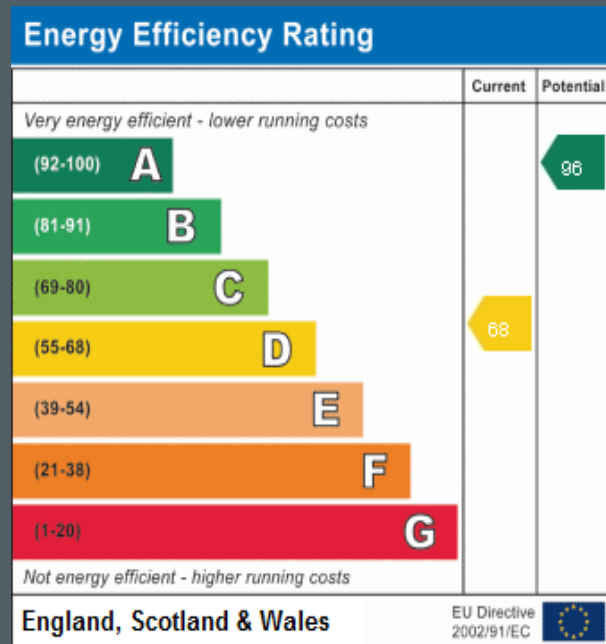
All measurements are approximate and for display purposes only

IMPORTANT NOTICE

IMPORTANT NOTICE Bardens Estates, their clients and any joint agents give notice that:

1. They are not authorised to make or give any representations or warranties in relation to the property either here or elsewhere, either on their own behalf or on behalf of their client or otherwise. They assume no responsibility for any statement that may be made in these particulars. These particulars do not form part of any offer or contract and must not be relied upon as statements or representations of fact.

2. Any areas, measurements or distances are approximate. The text, images, plans and video tour are for guidance only and are not necessarily comprehensive. It should not be assumed that the property has all necessary planning, building regulation or other consents and Bardens Estates have not tested any apparatus, fittings, or services. Purchasers must satisfy themselves by inspection or otherwise.



Bardens

Bardens Estates Limited
85 High Street, Tunbridge Wells, Kent, TN1 1XP
T: 01892 527317 E: sales@bardensestates.co.uk
www.bardensestates.co.uk