



Creek Lane, SW18

£3,650 Per calendar month

Dexters



Creek Lane, SW18

A well presented modern three double bedroom apartment situated on the first floor in the sought after Riverside Quarter. The apartment offers a spacious open plan living with direct access to a private terrace, modern integrated kitchen and two modern bathrooms.

Creek Lane is located on the bank of the Thames and offers nearby parks, amenities and various eating and drinking options in and around Putney, Wandsworth Town and Wandsworth High Street.

Features

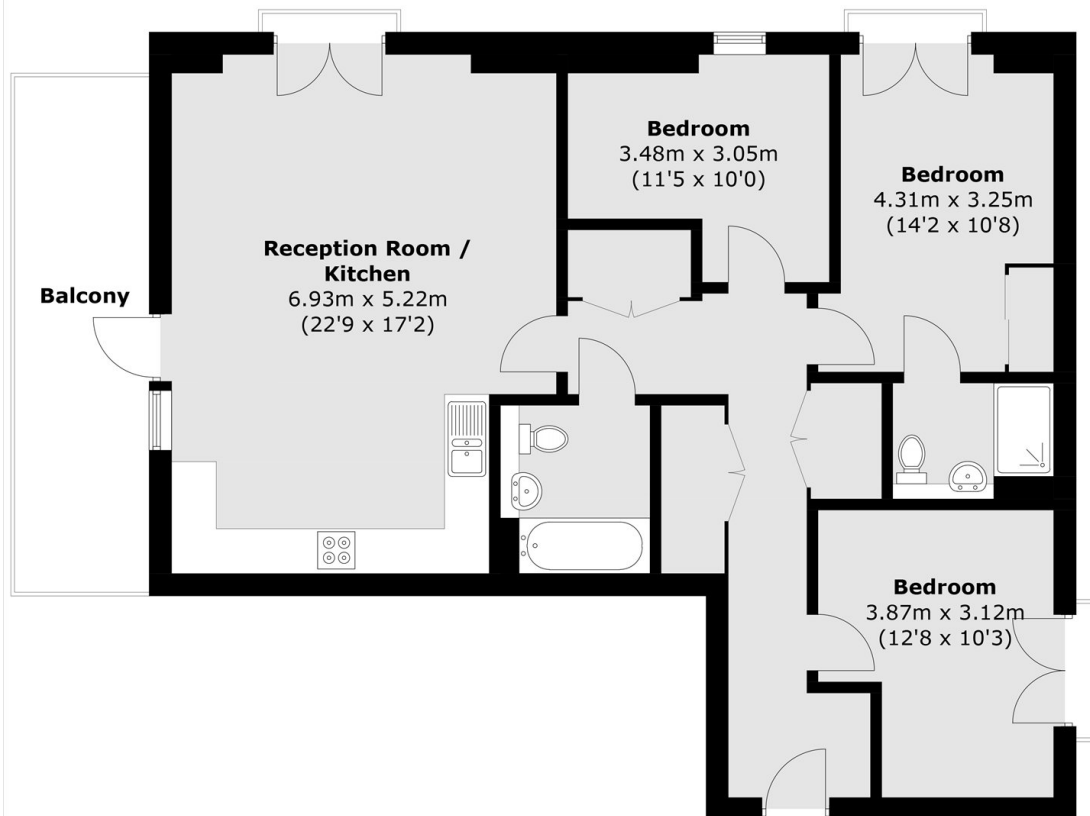
- Three Doub Bedrooms
- Open Plan Reception
- Modern Integrated Kitchen
- Two Bathrooms
- Neutral Decor
- Private Terrace







Creek Lane,
London, SW18



Total area (approx.): 96.0 sq. m (1,033.3 sq. ft)
Balcony area (approx.): 12.4 sq. m (133.5 sq. ft)