



HEMMINGS HOMES

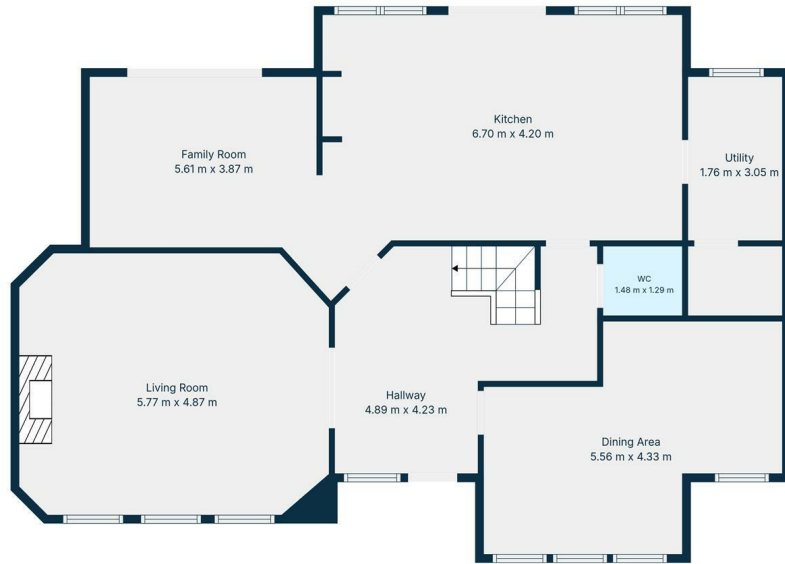


OFFERS OVER

£485,000


North & South Road


Motherwell, ML1 5LB




TOTAL: 225 m²
 Ground floor: 112 m², 1st floor: 113 m²
 EXCLUDED AREAS: UTILITY: 5 m², STAIRWELL: 4 m², WALLS: 16 m²
Floor Plan Created By Cubicasa App. Measurements Deemed Highly Reliable But Not Guaranteed.

5 

4 

3 

Energy Efficiency Rating		Current	Potential
<i>Very energy efficient - lower running costs</i>			
(92 plus)	A		
(81-91)	B		
(69-80)	C		
(55-68)	D		
(39-54)	E		
(21-38)	F		
(1-20)	G		
<i>Not energy efficient - higher running costs</i>			
Scotland		EU Directive 2002/91/EC 	



Agents Note: Whilst every care has been taken to prepare these particulars, they are for guidance purposes only. All measurements are approximate and are for general guidance purposes only and whilst every care has been taken to ensure their accuracy, they should not be relied upon and potential buyers/tenants are advised to recheck the measurements



HEMMING'S HOMES

OFFICE ADDRESS

376 Brandon Street
 Motherwell
 North Lanarkshire
 ML1 1XA

OFFICE DETAILS

01698 263413
enquiries@hemmingshomes.co.uk
hemmingshomes.co.uk