



ZAFER CETINEL POWERED BY **exp**™ **UK**

@ zafer.cetinel@exp.uk.com

zafercetinel.exp.uk.com

01242 374 844

Chiltern Road, Prestbury, Cheltenham, GL52 5JQ

£315,000

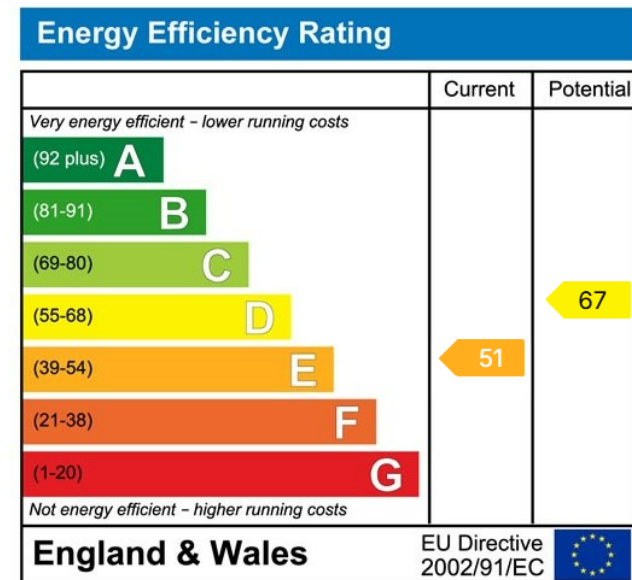
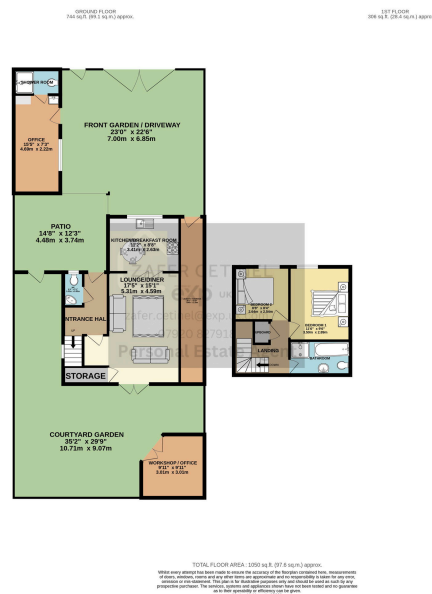
🛏️ 2 🚿 2 🚗 1



- CHILTERN ROAD, OFF BOUNCERS LANE, PRESTBURY
- UNIQUE DESIGN WITH GREAT LOCATION
- LOUNGE / DINER AND A KITCHEN BREAKFAST ROOM
- GARDEN OFFICE AND A CABIN WITH A SHOWER ROOM
- CENTRAL ELECTRIC HEATING AND DOUBLE GLAZING
- DETACHED HOUSE
- TWO BEDROOM AND A FOUR PIECE BATHROOM SUITE
- FRONT AND A REAR GARDEN
- CHAIN FREE
- REF ZAFER CETINEL



Modern detached house in the heart of Prestbury village, just off Bouncers Lane. Versatile, chain-free home with entrance hall and downstairs WC, lounge/diner with bifold doors into a kitchen/breakfast room, two bedrooms and a four-piece bathroom. Gated driveway, decked private courtyard, converted cabin with shower, rear office and side lean-to storage – electric heating and double glazing. Ready to move in.



eXp World UK Ltd is a registered company at Level 37, 25 Canada Square, London, E14 5LQ.

Registered company number is 12016573. VAT Registration Number is 327 4120 29