



MK

MK
ESTATES

Flat 26, Melford Court, St. Peters Road
£225,000

Flat 26

Melford Court, Bournemouth

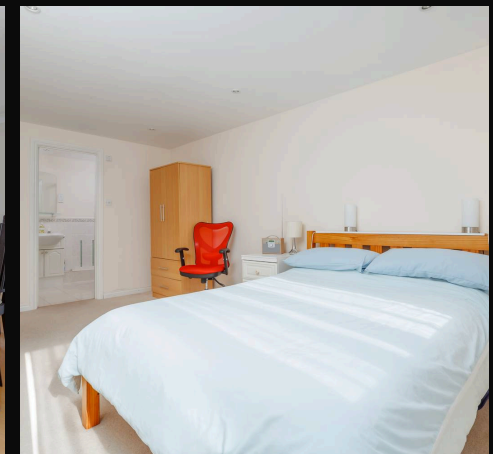
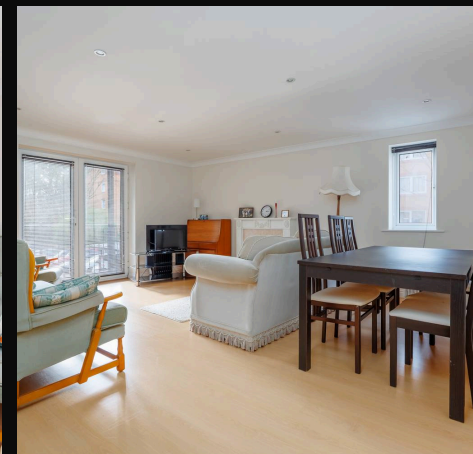
Council Tax band: E

Tenure: Leasehold

EPC Energy Efficiency Rating: C

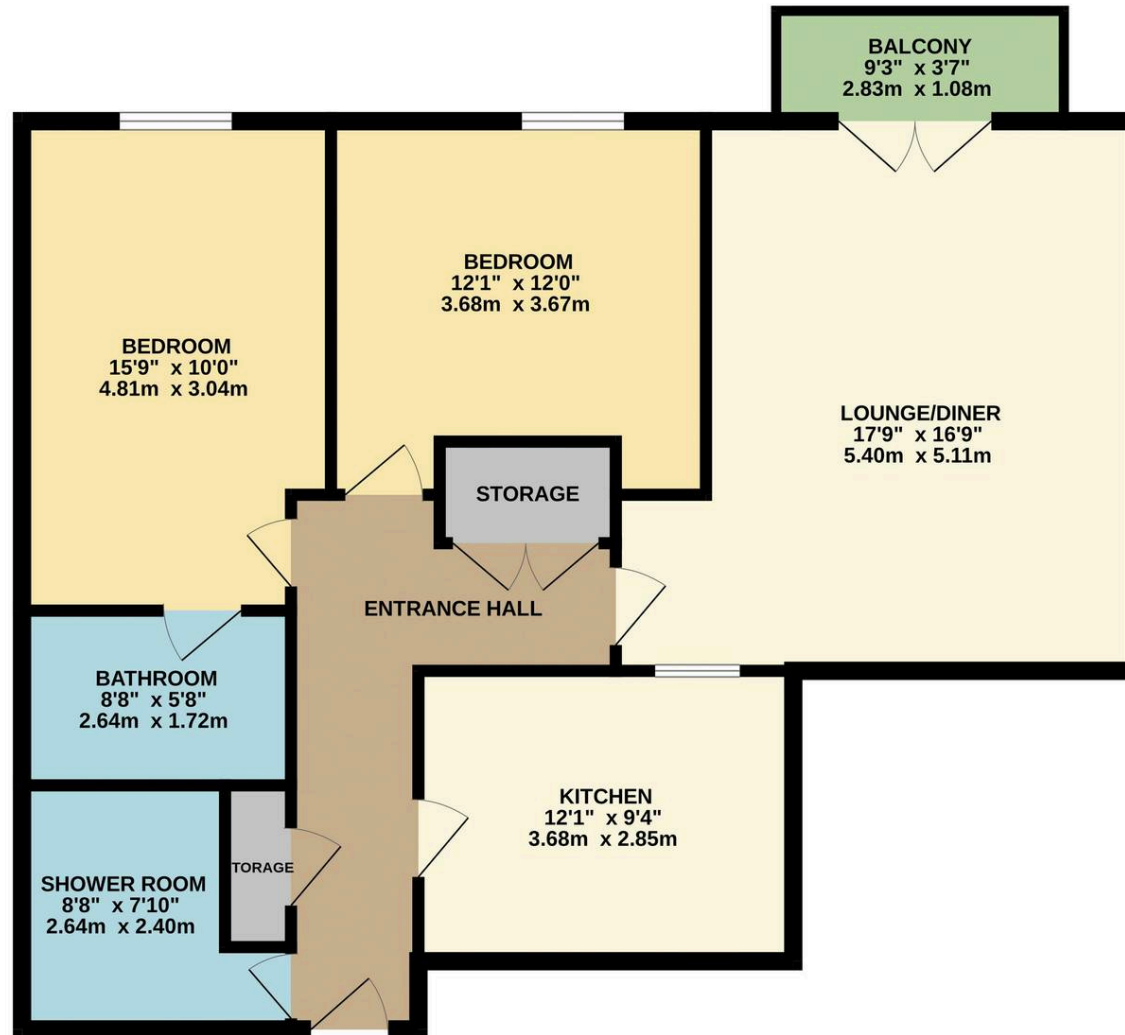
EPC Environmental Impact Rating: C

- Spacious Ground Floor Apartment
- Well Present Block With Secure Gated Entrance
- Share Of Freehold
- Two Double Bedrooms With En Suite Shower Room To Master
- Family Shower Suite
- Lounge/Dining Room With Double Doors To Balcony
- Separate Fully Fitted Kitchen
- Underground Allocated Parking Space & Additional Visitor Parking
- Service Charge: Approx. £2424 per annum (2025/26 Budget)
- No Forward Chain





GROUND FLOOR
897 sq.ft. (83.3 sq.m.) approx.



TOTAL FLOOR AREA: 897 sq.ft. (83.3 sq.m.) approx.

Whilst every attempt has been made to ensure the accuracy of the floorplan contained here, measurements of doors, windows, rooms and any other items are approximate and no responsibility is taken for any error, omission or mis-statement. This plan is for illustrative purposes only and should be used as such by any prospective purchaser. The services, systems and appliances shown have not been tested and no guarantee as to their operability or efficiency can be given.
Made with Metropix 62026