

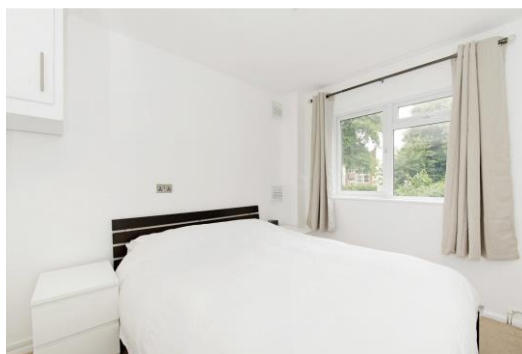
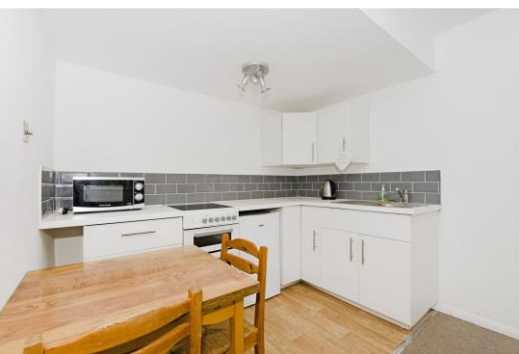


# Drummer Lodge

Kinloch Street, N7

£1,191.67 pcm

A bright one-bedroom apartment situated on the first floor of this small quiet block. The property comprises of; an open plan kitchen and reception room, double bedroom, a bathroom and off-street parking on a non-allocated basis.



# Drummer Lodge

Kinloch Street, N7

- One-Bedroom First Floor Apartment
- Open Plan Kitchen & Reception Room
- Double Bedroom
- Bathroom
- Off Street Parking Available
- Close To Transport Links





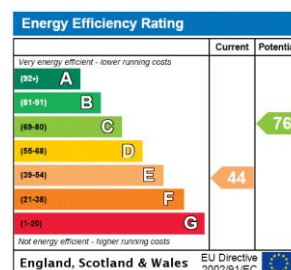
A bright one-bedroom apartment situated on the first floor of this small quiet block. The property comprises of; an open plan kitchen and reception room, double bedroom and a bathroom.

The property benefits from off street parking on a non-allocated basis. Offered on a furnished basis and available from early May.

Well located in close proximity to all amenities and transport links of Holloway Road and Arsenal Underground Tube Station (Piccadilly line).

**Tenure:** Long Let  
**Furnished**

Additional tenant charges apply (fees apply to non-AST tenancies only)  
Tenancy Agreement Fee: £300  
References per Tenant/Guarantor: £60  
Inventory check (approx. £100 – £250 inc. VAT)  
[chestertons.com/property-to-rent/applicable-fees](https://www.chestertons.com/property-to-rent/applicable-fees)

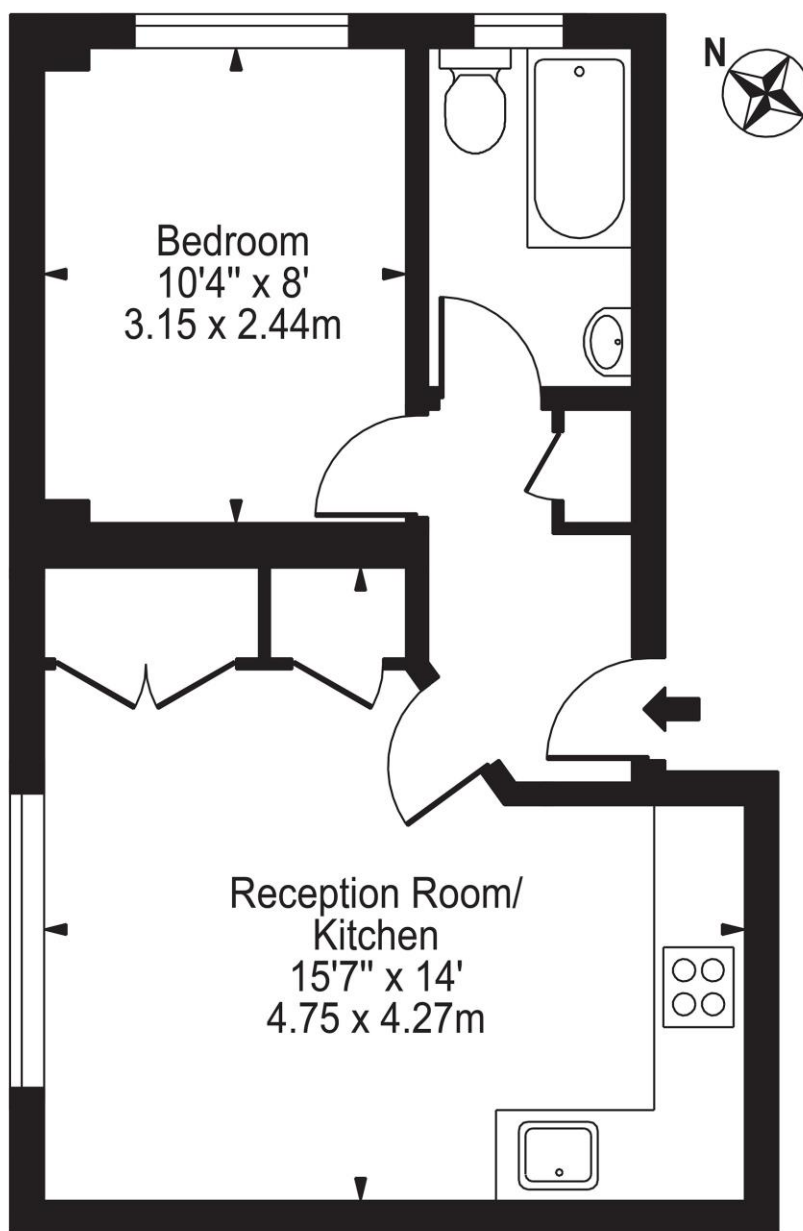


### *Chestertons Kentish Town Lettings*

225 Kentish Town Road  
London  
NW5 2JU  
[lettings.kentishtown@chestertons.com](mailto:lettings.kentishtown@chestertons.com)  
02072671010  
[chestertons.com](https://www.chestertons.com)

# Kinloch Street, N7

Approx. Gross Internal Area 353 Sq Ft - 32.79 Sq M



## First Floor

For Illustration Purposes Only - Not To Scale

This floor plan should be used as a general outline for guidance only and does not constitute in whole or in part an offer or contract. Any intending purchaser or lessee should satisfy themselves by inspection, searches, enquiries and full survey as to the correctness of each statement. Any areas, measurements or distances quoted are approximate and should not be used to value a property or be the basis of any sale or let.

