



15, Byde Street, Bengoe
SG14 3AR
Guide Price £470,000





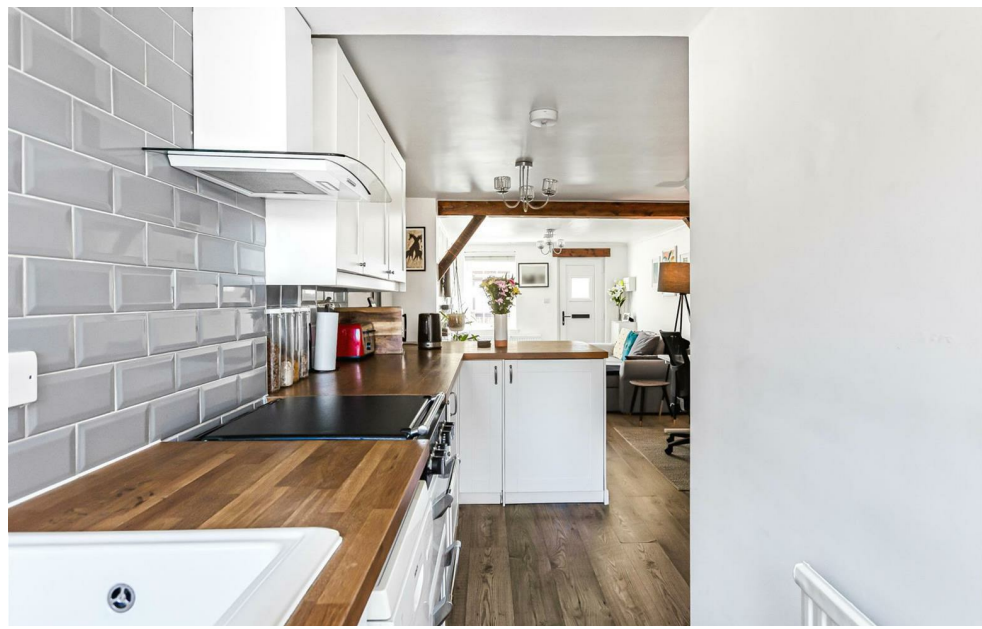
15 Byde Street, Bengeo, Herts, SG14 3AR

****Victorian House with off street parking for two cars**** charming two bedroom end-of-terrace character home, ideally situated in the highly sought-after and convenient location of Lower Bengeo. The property is within easy walking distance of Hertford North mainline station and the town centre, providing excellent transport links and a wide range of local amenities. The accommodation is arranged over two floors and extends to approximately 613 sq ft. The ground floor comprises a spacious living room leading through to an impressive 18ft kitchen/dining area, a modern family bathroom, and stairs rising to the first floor. Upstairs, the property offers two well-proportioned double bedrooms. Externally, the home benefits from a small front garden and a low-maintenance, mature rear garden, along with off-street parking for two vehicles at the rear.

The property is located within the lower slopes of Bengeo within an attractive Victorian road with excellent access to Hertford North station which is just a few minutes away. Local schooling is excellent with popular Millmead Primary School only a short distance away.



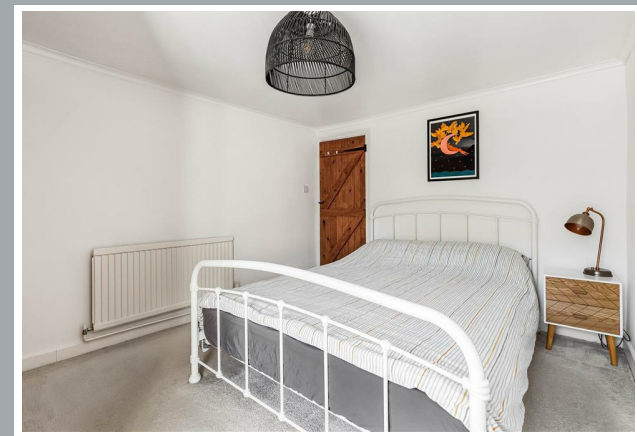
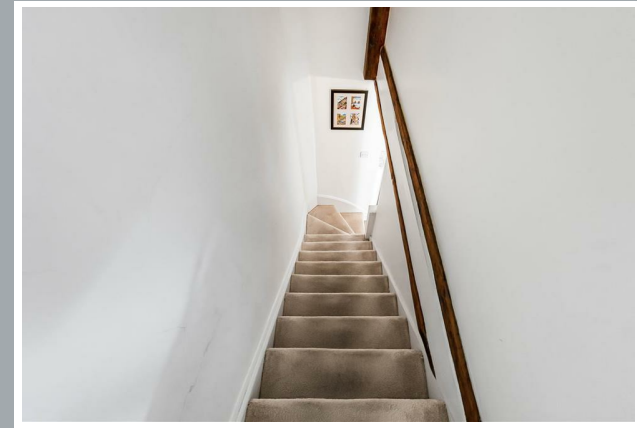
70 Fore Street, Hertford, Hertfordshire, SG14 1BY



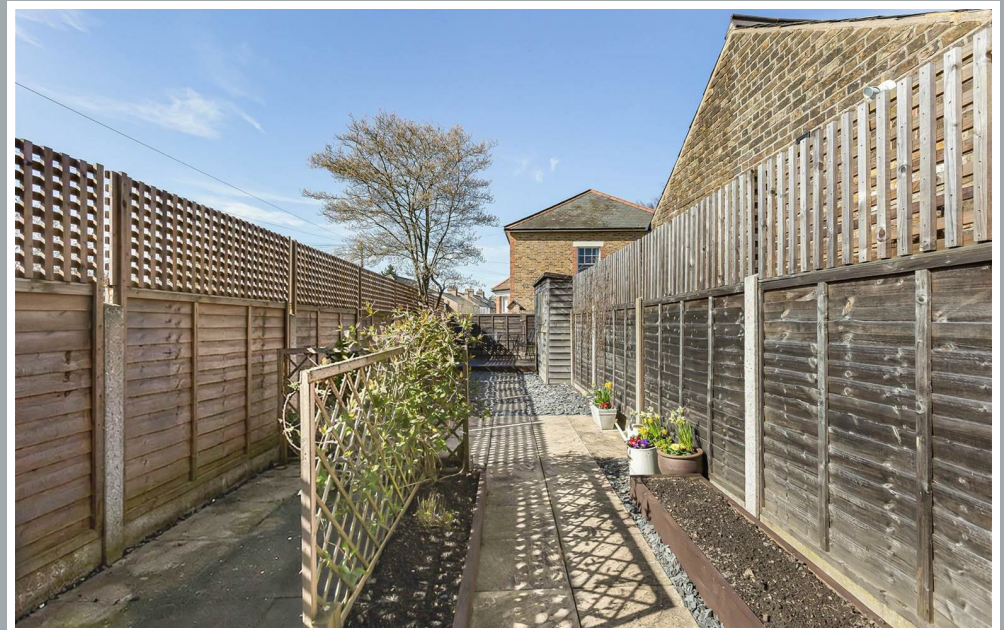
70 Fore Street, Hertford, Hertfordshire, SG14 1BY



70 Fore Street, Hertford, Hertfordshire, SG14 1BY



70 Fore Street, Hertford, Hertfordshire, SG14 1BY



70 Fore Street, Hertford, Hertfordshire, SG14 1BY



70 Fore Street, Hertford, Hertfordshire, SG14 1BY

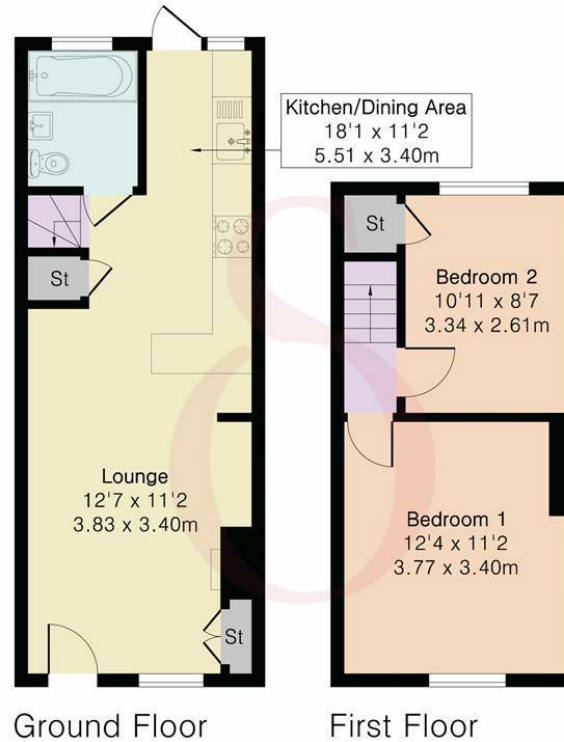


70 Fore Street, Hertford, Hertfordshire, SG14 1BY

Approximate Gross Internal Area 613 sq ft - 57 sq m

Ground Floor Area 347 sq ft – 32 sq m

First Floor Area 266 sq ft – 25 sq m



Floor plan produced in accordance with RICS Property Measurement 2nd Edition. Although Pink Plan Ltd ensures the highest level of accuracy, measurements of doors, windows and rooms are approximate and no responsibility is taken for error, omission or misstatement. These plans are for representation purposes only and no guarantee is given on the total square footage of the property within this plan. The figure icon is for initial guidance only and should not be relied on as a basis of valuation.



These particulars, whilst believed to be accurate are set out as a general outline only for guidance and do not constitute any part of an offer or contract. Intending purchasers should not rely on them as statements of representation of fact, but must satisfy themselves by inspection or otherwise as to their accuracy. No person in this firm's employment has the authority to make or give any representation or warranty in respect of the property.

