



MALLINSON
& CO

INNOVATIVE PROPERTY EXPERTS

Mortomley Lane, High Green, Sheffield, S35 3HU

Offers Over £350,000

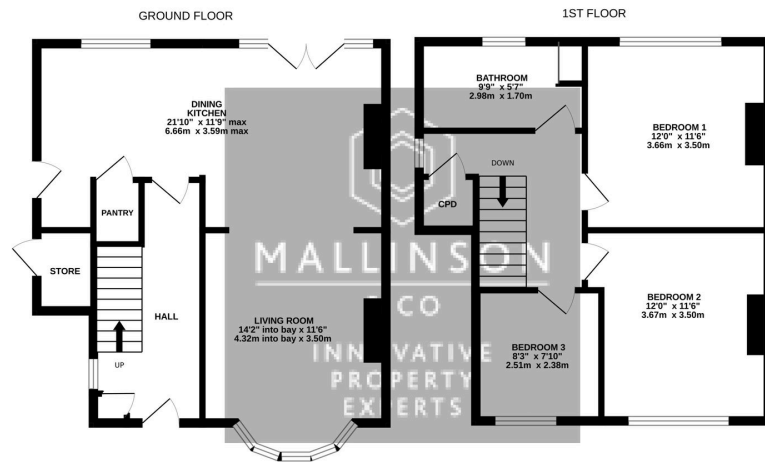
🛏 3 🚿 1 🚗 1



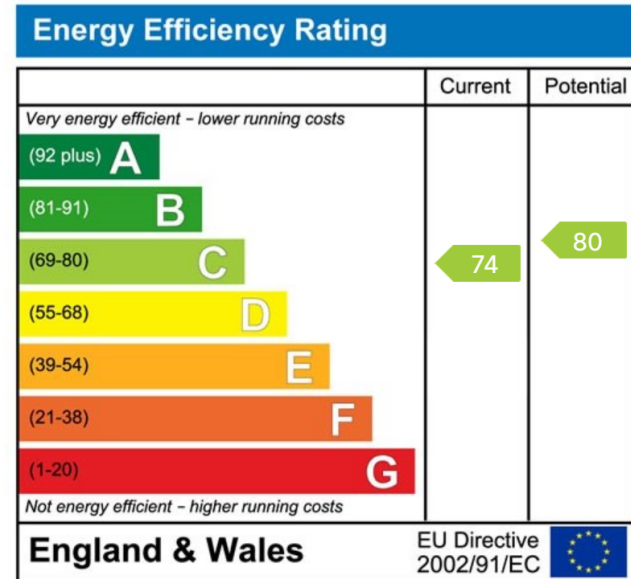
- WELL PRESENTED THROUGHOUT
- THREE BEDROOMS
- BREAKFAST BAR
- MULTI-TIERED LANDSCAPED REAR GARDEN
- DETACHED GARAGE AND LARGE WORKSHOP
- DETACHED
- IMPRESSIVE OPEN PLAN LIVING SPACE
- FEATURE LOG BURNER
- DECKING AREA WITH HOT TUB AND OUTDOOR POWER
- FRONT AND REAR OFF STREET PARKING



A BEAUTIFULLY APPOINTED FAMILY HOME WITH STYLISH OPEN PLAN LIVING. OCCUPYING A DESIRABLE POSITION AND OFFERING DECEPTIVELY SPACIOUS ACCOMMODATION THROUGHOUT, THIS WELL PRESENTED THREE BEDROOM HOME HAS BEEN THOUGHTFULLY DESIGNED TO SUIT MODERN FAMILY LIVING. FEATURING AN IMPRESSIVE OPEN PLAN KITCHEN, DINING AND LIVING SPACE, A MULTI-LEVEL LANDSCAPED GARDEN WITH HOT TUB, AND ADDITIONAL OUTBUILDINGS, THE PROPERTY COMBINES COMFORT, PRACTICALITY AN LIFESTYLE APPEAL IN EQUAL MEASURE.



TOTAL FLOOR AREA: 963 sq.ft. (89.5 sq.m.) approx.
We have made every attempt to ensure the accuracy of the floorplan contained here, measurements of doors, windows, rooms and any other items are approximate and no responsibility is taken for any error, omission or mis-statement. This plan is for illustrative purposes only and should be used as such by any prospective purchaser. The services, systems and appliances shown have not been tested and no guarantee as to their operability or efficiency can be given.
 Made with Metropix 02/20



INNOVATIVE
PROPERTY
EXPERTS

Mallinson & Co

Office: 01226 414 150

Email: ben@mallinsonandco.co.uk

Web: www.mallinsonandco.co.uk

Suite 6, Penistone 1, St. Mary's Street, Penistone, S36 6DT