

Willow Tree Close

Ickenham • Middlesex • UB10 8RD

Guide Price: £675,000



coopers
est 1986

Willow Tree Close

Ickenham • Middlesex • UB10 8RD

Located on the sought-after Willow Tree Close, this spacious three-bedroom semi-detached home is just moments from Ickenham Station and within easy reach of local shops and amenities. The property offers three large bedrooms, spacious living accommodation, a well proportioned easy to maintain private rear garden, and a driveway providing off-street parking. An ideal family home in a prime and convenient location. The property also benefits from excellent transport links and is situated within a quiet residential cul-de-sac, making it perfect for families and commuters alike.

Three bedrooms

Semi detached

Spacious interior throughout

Off street parking

Private garden

Moments from Ickenham station

Short walk to Ickenham village

Nearby to sought after schools

Cul-de-sac

Easy access to A40/M25

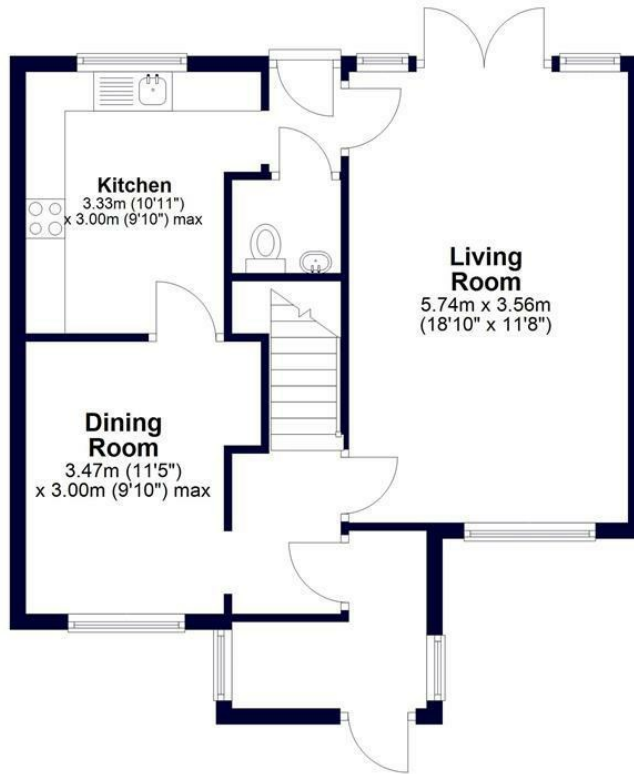
These particulars are intended as a guide and must not be relied upon as statements of fact. Your attention is drawn to the Important Notice on the last page.





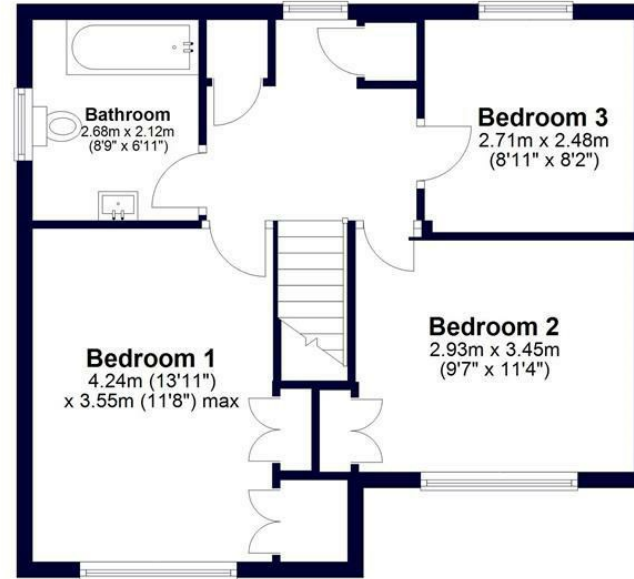
Ground Floor

Approx. 52.8 sq. metres (568.4 sq. feet)



First Floor

Approx. 48.7 sq. metres (524.4 sq. feet)



Total area: approx. 101.5 sq. metres (1092.8 sq. feet)

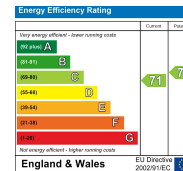


Whilst every effort has been made to ensure the accuracy of this floor plan, measurements of doors, windows, rooms and other items are approximate and no responsibility is taken for any errors. This plan is for illustrative purposes only and should be used as such by any prospective purchaser.
©Property Pot. Produced on behalf of Coopers Residential.



**27-29 Swakeleys Road, Ickenham,
Middlesex, UB10 8DF**
ickenham@coopersresidential.co.uk

CoopersResidential.co.uk



Important Notice: These particulars, whilst believed to be accurate are set out as a general outline only for guidance and do not constitute any part of an offer or contract. Intending purchasers should not rely on them as statements or representation of fact, but must satisfy themselves by inspection or otherwise has the authority to make or give any representation or warranty in respect of the property.