



Birchington Road

London, NW6

£2,150 per month
(£496.15 per week)

A well-presented two bedroom flat set within a charming period conversion, ideally located just a short walk from Kilburn High Road Station.

CHESTERTONS



Birchington Road

London, NW6

- 2 Double Bedrooms
- Period Conversion
- Separate Kitchen
- Unfurnished
- First Floor



A well-presented two bedroom flat set within a charming period conversion, ideally located just a short walk from Kilburn High Road Station. The property offers a comfortable lounge, separate fitted kitchen, two generous double bedrooms, and a well-appointed bathroom.

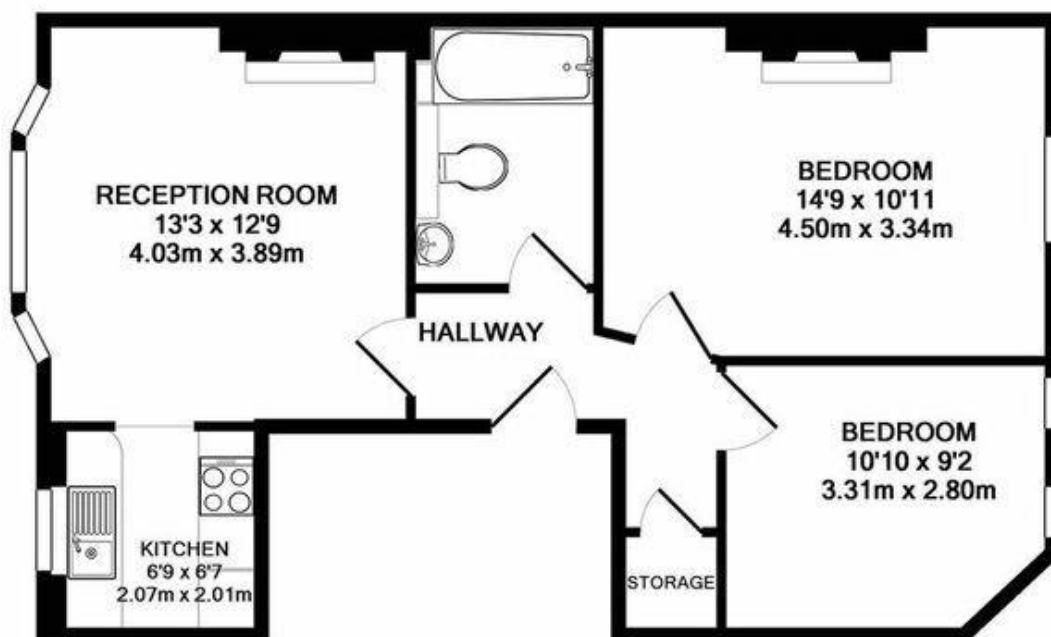
Minimum Term: 12 months
Deposit Required: £2,480.77
Local Authority: London Borough Of Camden
Council Tax Band: D
EPC Rating: C
Unfurnished

Score	Energy rating	Current	Potential
92+	A		
81-91	B		
69-80	C	71 C	78 C
55-68	D		
39-54	E		
21-38	F		
1-20	G		

Chestertons Hampstead Lettings

55-56 Hampstead High Street
Hampstead
London
NW3 1QH
hampsteadlettingsusers@chestertons.co.uk
02077941125
chestertons.co.uk

Additional tenant charges apply (fees apply to non-AST tenancies only)
Tenancy Agreement Fee: £300
References per Tenant/Guarantor: £60
Inventory check (approx. £100 – £250 inc. VAT)
chestertons.co.uk/property-to-rent/applicable-fees



BIRCHINGTON ROAD NW6
TOTAL APPROX. FLOOR AREA 581 SQ.FT. (54.0 SQ.M.)

Floorplans are for identification and guideline purposes only, not to scale. Compliant with RICS code of measuring practice. Floor plan supplied by Chik Chak Limited.
Made with Metropix G2017.

