



Motley Avenue, EC2A

Per week

A unique two bedroom house arranged over three floors in the heart of Shoreditch. The property opens onto a generous entryway and leads onto the large, semi-open plan living room with ample space to dine. The kitchen has been recently renovated and has fully integrated appliances. Through the kitchen area you have a downstairs utility room and WC.

Motley Avenue is located within the very heart but also within a peaceful pocket of Shoreditch. The area offers an ample choice of shops, bars and even a selection of Michelin Starred restaurants. Brick Lane, Columbia Road Flower Market and Spitalfields Market are also close by. Transport links are very convenient as Shoreditch High Street, Liverpool Street and Old Street tube stations are equidistant.

Features

- House
- Arranged Over Three Floors
- Recently Renovated
- Original Period Features
- Two Large Bedrooms
- Multiple En Suites

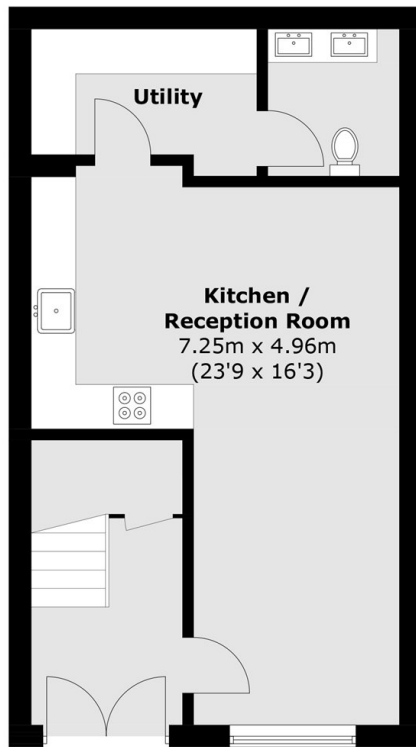


Motley Avenue, EC2A

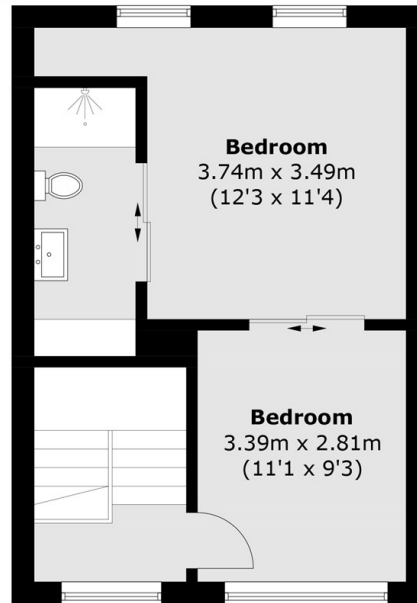
A unique two bedroom house arranged over three floors in the heart of Shoreditch. The property opens onto a generous entryway and leads onto the large, semi-open plan living room with ample space to dine. The kitchen has been recently renovated and has fully integrated appliances. Through the kitchen area you have a downstairs utility room and WC.



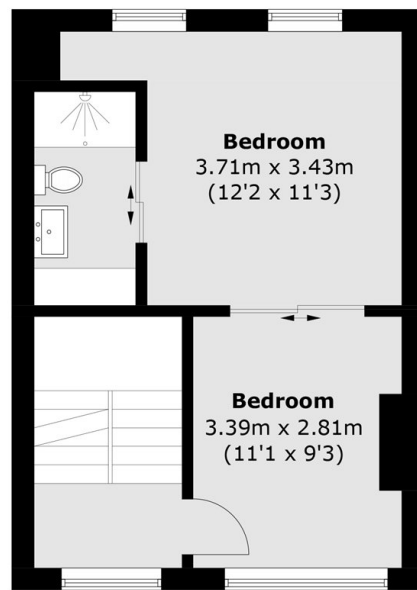
Motley Avenue, London, EC2A



Ground Floor



Second Floor



First Floor

Total area (approx.): 120.0 sq. m (1,291.6 sq. ft)