



Flat (EPC Rating: D)

**UNIT 2, ALPHABET
MEWS, 119-123
HACKFORD WALK
OVAL, LONDON, SW9
0FN**

**£461 Per
Week**



1 Bedroom Flat located in London

Call us on

02075824011

lettings@avrasons.co.uk

Avrasons are delighted to offer to the market this Luxury split level mews apartment with private balcony, located close to Oval underground station(Northern Line) and Stockwell Station(northern and Victoria Line) and an array of local restaurants, shops and gyms.

This stunning apartment consists of a semi open-plan kitchen/Living room, large double bedroom, modern bathroom suite and private balcony. On site secure bike storage is also provided FREE, plus extra option for off street allocated parking space for £65per month.

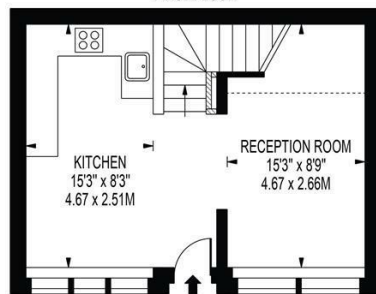
Offered furnished and available from 8th August

EPC: D
 Council Tax: Lambeth Band D
 Holding Fee: 1 Weeks Rents
 Damage Deposit: 5 Weeks Rents

Council Tax Band

D

ALPHABET MEWS
 APPROXIMATE TOTAL INTERNAL FLOOR AREA: 639 SQ FT - 59.40 SQ M
 (INCLUDING RESTRICTED HEIGHT AREA)
 APPROXIMATE GROSS INTERNAL FLOOR AREA OF RESTRICTED HEIGHT: 26 SQ FT - 2.46 SQ M



FOR ILLUSTRATION PURPOSES ONLY
 THIS FLOOR PLAN SHOULD BE USED AS A GENERAL OUTLINE FOR GUIDANCE ONLY AND DOES NOT CONSTITUTE IN WHOLE OR IN PART AN OFFER OR CONTRACT.
 ANY INTENDING PURCHASER OR LESSEE SHOULD SATISFY THEMSELVES BY INSPECTION, SURVEYS, ENQUIRIES AND FULL SURVEY AS TO THE CORRECTNESS OF EACH STATEMENT.
 ANY AREAS, MEASUREMENTS OR DISTANCES QUOTED ARE APPROXIMATE AND SHOULD NOT BE USED TO VALUE A PROPERTY OR BE THE BASIS OF ANY SALE OR LET.

Energy Efficiency Rating		Current	Potential
<i>Very energy efficient - lower running costs</i>			
(92 plus)	A		91
(81-91)	B		
(69-80)	C		
(55-68)	D	62	
(39-54)	E		
(21-38)	F		
(1-20)	G		
<i>Not energy efficient - higher running costs</i>			
England & Wales		EU Directive 2002/91/EC	

Agents Note: Whilst every care has been taken to prepare these particulars, they are for guidance purposes only. All measurements are approximate and are for general guidance purposes only and whilst every care has been taken to ensure their accuracy, they should not be relied upon and potential buyers are advised to recheck the measurements.

