



Connells

Whinchat Drive
Cannock



Ground Floor

Hallway

Being a through hallway with access to the kitchen, family room, WC and lounge, radiator, ceiling light point and a fitted floor mat

Kitchen

10' 6" x 7' 10" (3.20m x 2.39m)

Being a fitted kitchen with a range of wall, base and drawer units with laminate work surfaces over and having a one and half bowl sink, electric oven with electric hob and cookerhood over, plumbing for dishwasher, space for appliances, tiled splashbacks, ceiling light point and a double glazed window to the front aspect

Family Room

15' 4" x 7' 10" (4.67m x 2.39m)

Being a perfect space for an additional sitting room, office/study or playroom, having a double glazed windows to the front and side aspects, laminate flooring, ceiling light point and radiator

Lounge/ Diner

18' 10" x 11' 2" (5.74m x 3.40m)

Having a double glazed window to the rear aspect and doors leading to the conservatory, radiator, two ceiling lights, wall light, laminate flooring, stairs to first floor and space for dining furniture

Conservatory

10' 10" x 9' 6" (3.30m x 2.90m)

Being a UPVC conservatory with double glazed windows to the rear and side aspects, double doors leading to the garden, laminate flooring and ceiling light point



First Floor

Landing

Having access to all bedrooms, bathroom and loft access

Bedroom 1

11' 6" x 10' 10" (3.51m x 3.30m)

Having a double glazed window to the front aspect, built in wardrobes, radiator, ceiling light point, carpeted flooring and door to en-suite

En-Suite

Having a double glazed window to the front aspect, WC, wash hand basin, shower, tiled walls, ceiling light point and vinyl flooring

Bedroom 2

11' 2" x 10' (3.40m x 3.05m)

Having a double glazed window to the rear aspect, built in wardrobes, radiator, ceiling light point and carpet flooring

Bedroom 3

9' 1" x 8' 2" (2.77m x 2.49m)

Having a double glazed window to the rear aspect, radiator, ceiling light point and carpet flooring

Bathroom

Having a double glazed window to the side aspect, WC, wash hand basin, bath with shower attachment, part tiled walls, radiator, ceiling light point, extractor fan and vinyl flooring

Outside

Front

Having a brick paved driveway suitable for multiple vehicles and side access to the rear garden

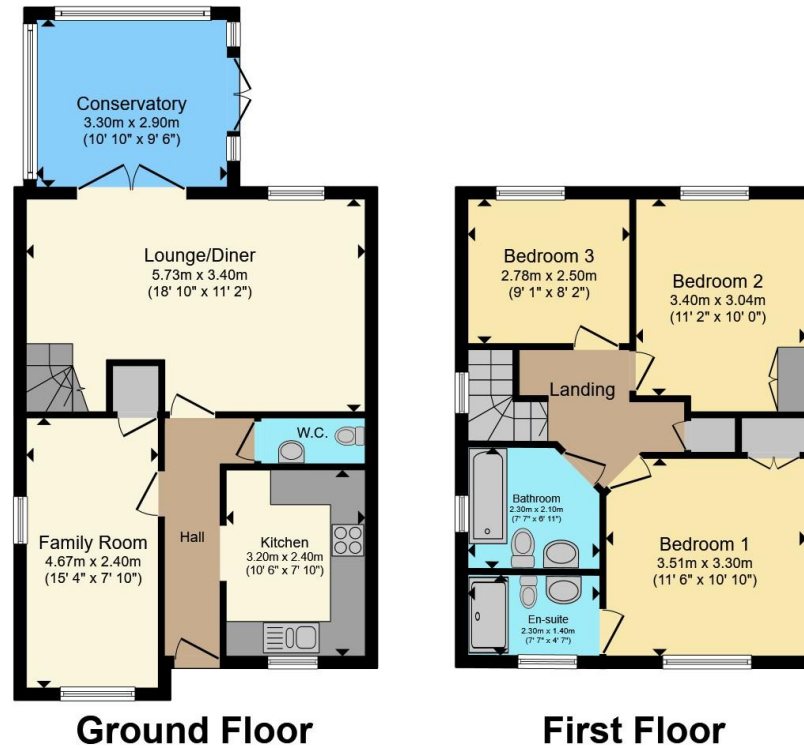
Rear

Having a paved patio area and laid to astro turf lawn









Total floor area 103.7 m² (1,117 sq.ft.) approx
 This floor plan is for illustrative purposes only. It is not drawn to scale. Any measurements, floor areas (including any total floor area), openings and orientation are approximate. No details are guaranteed, they cannot be relied upon for any purpose and they do not form part of any agreement. No liability is taken for any error, omission or misstatement. A party must rely upon its own inspection(s). Powered by www.propertybox.io



To view this property please contact Connells on

T 01543 500923
E cannock@connells.co.uk

10-12 Wolverhampton Road
 CANNOCK WS11 1AH

EPC Rating: C Council Tax Band: C

Tenure: Freehold

view this property online connells.co.uk/Property/CNK108736



1. MONEY LAUNDERING REGULATIONS Intending purchasers will be asked to produce identification documentation at a later stage and we would ask for your co-operation in order that there will be no delay in agreeing the sale. 2. These particulars do not constitute part or all of an offer or contract. 3. The measurements indicated are supplied for guidance only and as such must be considered incorrect. Potential buyers are advised to recheck measurements before committing to any expense. 4. We have not tested any apparatus, equipment, fixtures, fittings or services and it is in the buyers interest to check the working condition of any appliances.

Connells Residential is registered in England and Wales under company number 1489613, Registered Office is Cumbria House, 16-20 Hockliffe Street, Leighton Buzzard, Bedfordshire, LU7 1GN. VAT Registration Number is 500 2481 05.

See all our properties at www.connells.co.uk | www.rightmove.co.uk | www.zoopla.co.uk

Property Ref: CNK108736 - 0004