



Clanricarde Gardens, W2

£2,000 Per calendar month

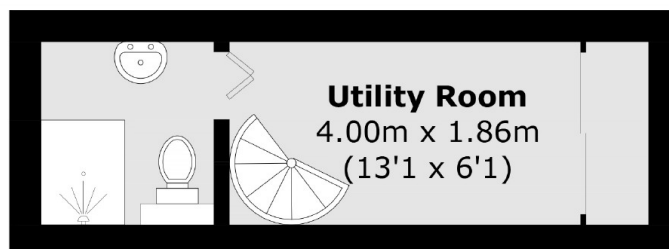
A bright and spacious split-level studio apartment arranged over two floors within a well-maintained period conversion. Boasting high ceilings and excellent natural light, the property features a generous living area, separate kitchen and a spiral staircase leading to a separate bedroom area with an en-suite bathroom, creating a unique and versatile living space.

Located moments from Notting Hill Gate station, Hyde Park and Portobello Road with its wide variety of fashionable bars, restaurants & shops close by.

Features

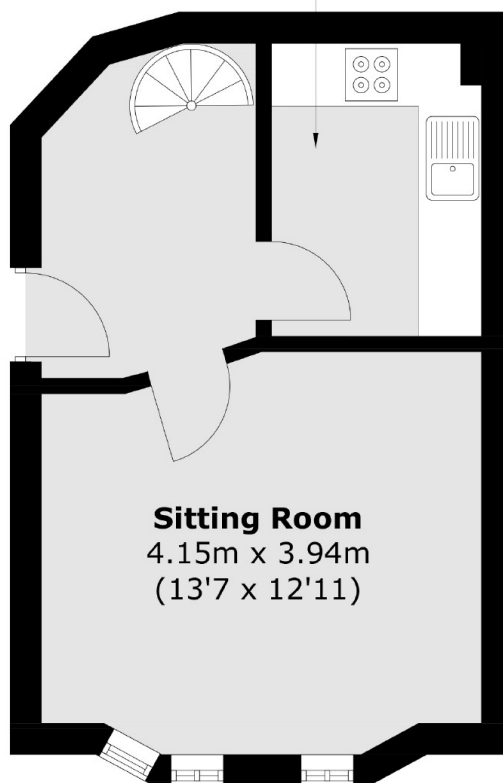
Studio Apartment
Raised Ground Floor
Split Level
High Ceilings
Separate Kitchen

Clanricarde Gardens, London, W2



First Floor

Kitchen
2.82m x 2.00m
(9'3 x 6'7)



Ground Floor

Total area (approx.): 37.8 sq. m (406.9 sq. ft)