



MARCO HARRIS
THE PROPERTY PROFESSIONALS

Mount View, Eastleigh, Southampton, SO50

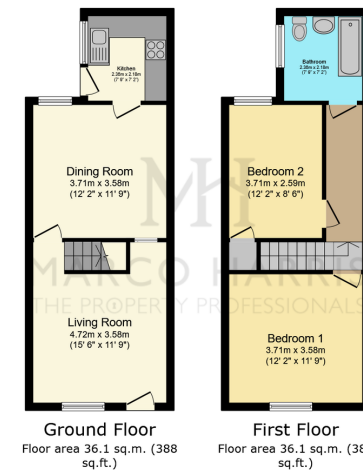
Guide Price £250,000

🛏 2 🍳 1 🚿 2



- Charming Victorian terraced cottage near town
- Two spacious and well-proportioned bedrooms
- Separate dining room for entertaining guests
- Secure gated access and coal store
- Close to schools and local amenities
- Modern kitchen installed in May 2023
- Cosy lounge with chimney breast feature
- Stylish, low-maintenance rear garden design
- Short walk to Eastleigh train station
- On-street parking directly outside property





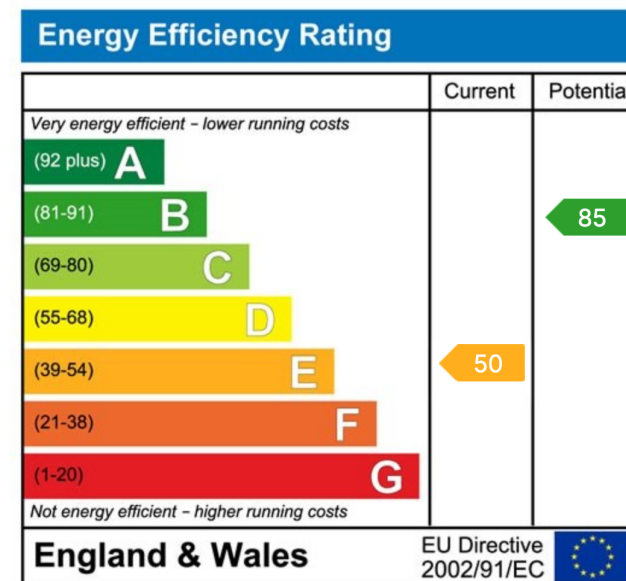
Total floor area: 72.2 sq.m. (777 sq.ft.)

This floor plan is for illustrative purposes only. It is not drawn to scale. Any measurements, floor areas (including any total floor area), openings and orientations are approximate. No details are guaranteed, they cannot be relied upon for any purpose and do not form any part of any agreement. No liability is taken for any error, omission or misstatement. A party must rely upon its own inspection(s). Powered by www.PropertyBox.io

MH
MARCO HARRIS
THE PROPERTY PROFESSIONAL

GUIDE PRICE £250,000 - £260,000

Welcome to Mount View by Marco Harris- A delightful two-bedroom period terraced cottage positioned in the heart of Eastleigh, offering the perfect blend of character charm and modern convenience. Set just moments from the town centre and Eastleigh's mainline train station, this home provides ideal access for commuters and town-goers alike. Featuring two well-proportioned double bedrooms, two reception rooms, a stylish new kitchen (fitted in 2023), and a private, low-maintenance rear garden with additional secure storage, this is a superb opportunity for first-time buyers, investors, or downsizers looking for a turnkey home.



Website: marcoharris.co.uk

Email: lettings@marcoharris.co.uk // sales@marcoharris.co.uk

Phone: 02381 733330