



## ALBANY COURT , CROMER, NR27 9AZ

£190,000

LEASEHOLD - SHARE OF  
FREEHOLD

### FANTASTIC SEAVIEWS

A well presented second floor apartment situated close to Cromer Town Centre. Comprising Lounge, Kitchen, Two Double Bedrooms, Bathroom, Balcony with Sea Views and Allocated Off Road Parking. Recently Redecorated & Newly Fitted Flooring.

A beautiful CHAIN FREE property with stunning sea views and recently redecorated. This apartment is ready to move into and relax whilst enjoying all coastal life has to offer.

Call Henleys to arrange a viewing.

henleys  
ESTATE AGENCY SIMPLIFIED

# ALBANY COURT

- **\*\* CHAIN FREE \*\*** • Priced to sell • Amazing sea views • 2 double bedrooms • Share of freehold • Right on the sea front • No upward chain • Walking distance to transport links and town centre • Viewing recommended



## OVERVIEW

Albany Court is a purpose built group of two apartment blocks directly on Cromer's sea front. This second floor apartment is situated in the front block which allows panoramic sea views. The apartment does require upgrading but has huge potential.

## COMMUNAL ENTRANCE

Stairs to all floors and intercom phone entry system.

## CENTRAL HALLWAY

From the hall, doors open to the lounge, the kitchen, the two bedrooms and the bathroom. Built in storage cupboards with hot water tank and immersion heater. Newly fitted wood effect vinyl type flooring.

## LOUNGE/DINING ROOM

A full width uPVC double glazed window with panoramic sea views, uPVC French doors open to a balcony seating area with a panoramic sea view. Serving counter into the kitchen. Newly fitted carpeted flooring.

## KITCHEN

Range of wall and base units with worktops over, inset sink, part tiled walls. The kitchen has spaces for an upright fridge. Built-in electric and four ring hob with filter extraction unit over. Serving hatch to the lounge area to further enjoy the panoramic sea views. Newly fitted wood effect vinyl type flooring.

## BEDROOM 1

uPVC Double Glazed Window to the rear aspect, built in wardrobes and newly fitted carpeted flooring.

## BEDROOM 2

uPVC Double glazed window to the rear elevation and newly fitted carpeted flooring. Built-in wardrobe.

## BATHROOM

Low level dual-flush WC, sink set into vanity unit, panelled bath with electric shower over over, newly fitted wood effect vinyl floor, part tiled walls and wall mounted towel radiator.

## PARKING

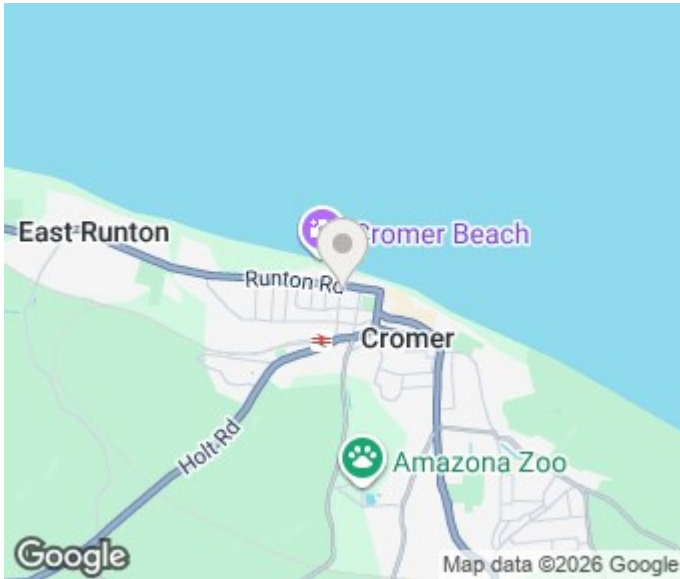
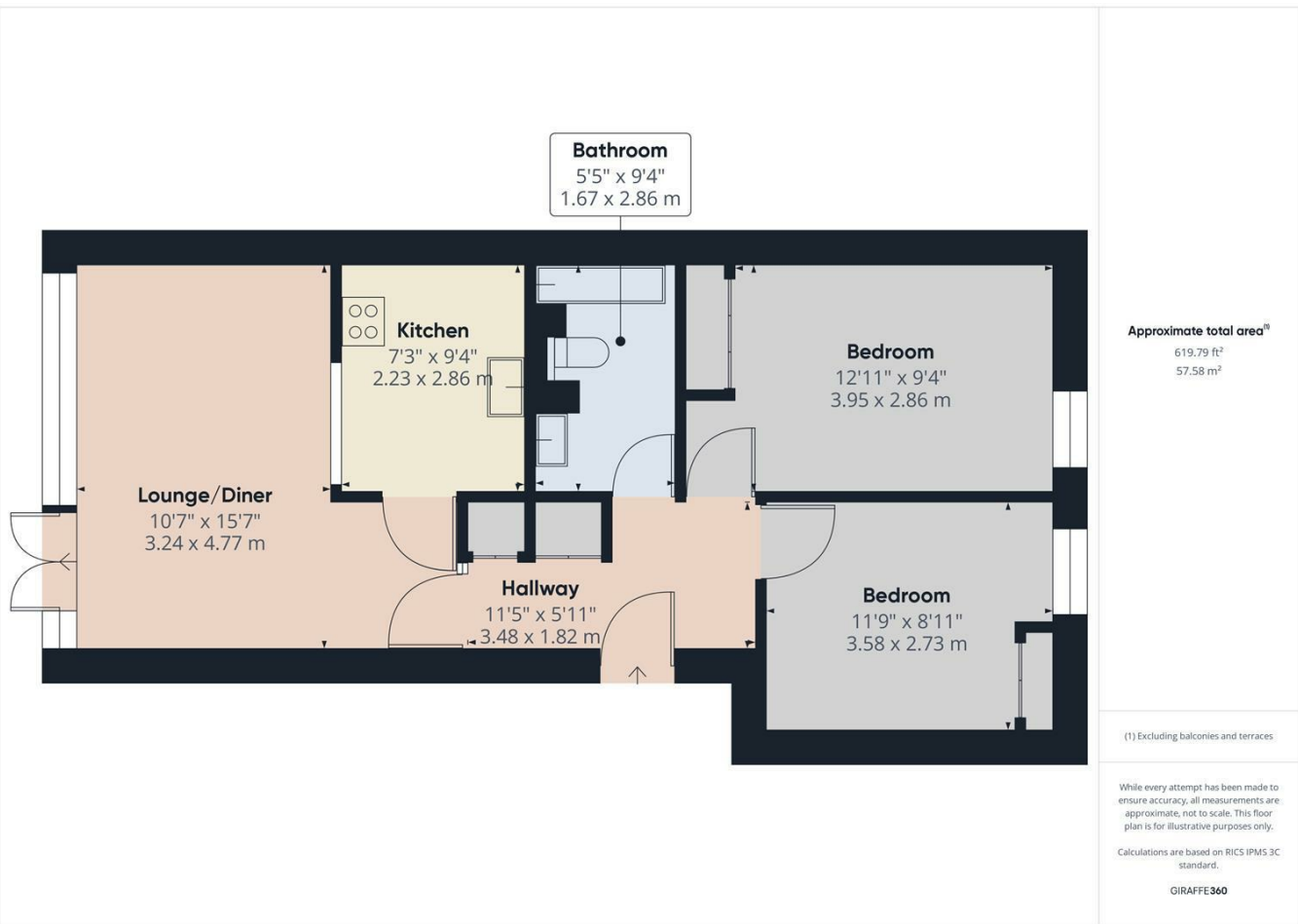
Single allocated parking space to the rear of the apartments.

## AGENTS NOTES

- 999 years from 1972
- Annual Charges approx. £1953 per annum
- Pets with permission
- Long term lets allowed
- Holiday lets not permitted
- Share of freehold

# 11 ALBANY COURT





Energy Efficiency Rating		
	Current	Potential
Very energy efficient - lower running costs		
(92 plus) <b>A</b>		
(81-91) <b>B</b>		
(69-80) <b>C</b>		
(55-68) <b>D</b>	55	59
(39-54) <b>E</b>		
(21-38) <b>F</b>		
(1-20) <b>G</b>		
Not energy efficient - higher running costs		
<b>England &amp; Wales</b>	EU Directive 2002/91/EC	

**henleys**  
ESTATE AGENCY SIMPLIFIED

15 West Street, Cromer, Norfolk, NR27 9HZ  
01263 511111 • hello@henleyshomes.co.uk • henleyshomes.co.uk

These particulars and measurements whilst believed to be accurate, are set out as a general outline only for guidance and do not constitute any part of an offer or contract. Intending purchasers should not rely on them as statements of representation of fact, but must satisfy themselves by inspection or otherwise as to their accuracy. No person in this firm's employment has the authority to make or give representation or warranty in respect of the property.

ESTATE AGENCY SIMPLIFIED