



## Jersey Road, TW7

£925,000

Offered to the market with no onward chain, we are delighted to bring to the market a rare opportunity to acquire this stunning four bedroom semi detached family home with unrivalled views overlooking Osterley Park.

Located on one of the most sought after residential roads in Osterley and Isleworth, this house is located moments away the gates of Osterley Park and House offering beautiful open green spaces of this tremendous and iconic National Park. Osterley tube station (Piccadilly line) is a short walk away, as are local schools and amenities.

### Features

- Semi-Detached Four Bedroom
- Large South-Facing Garden
- Period Features
- Off-Street Parking
- Scope To Extend (STPP)
- Chain Free

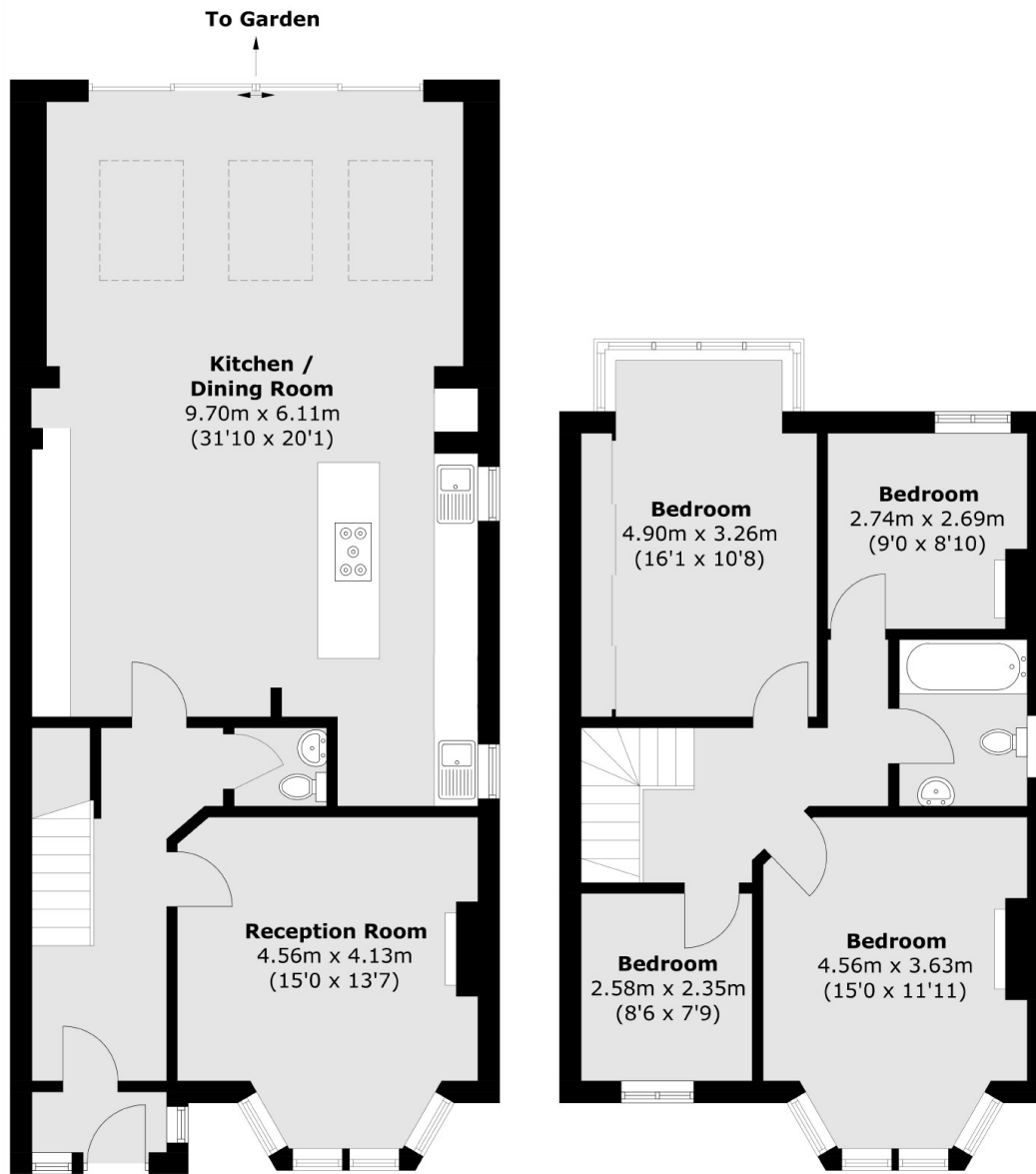


## Jersey Road, TW7

This charming house delights with period features throughout, and comprises of four bedrooms, two bathrooms, two reception rooms and generous open-plan dining/kitchen room. Further benefits include a large secluded garden and driveway for multiple cars. There is further scope to extend STPP.



# Jersey Road, Isleworth, TW7



**Ground Floor**

**First Floor**

Total area (approx.): 144.4 sq. m (1,554.4 sq. ft)