



Ivybridge Close, TW1

£275,000

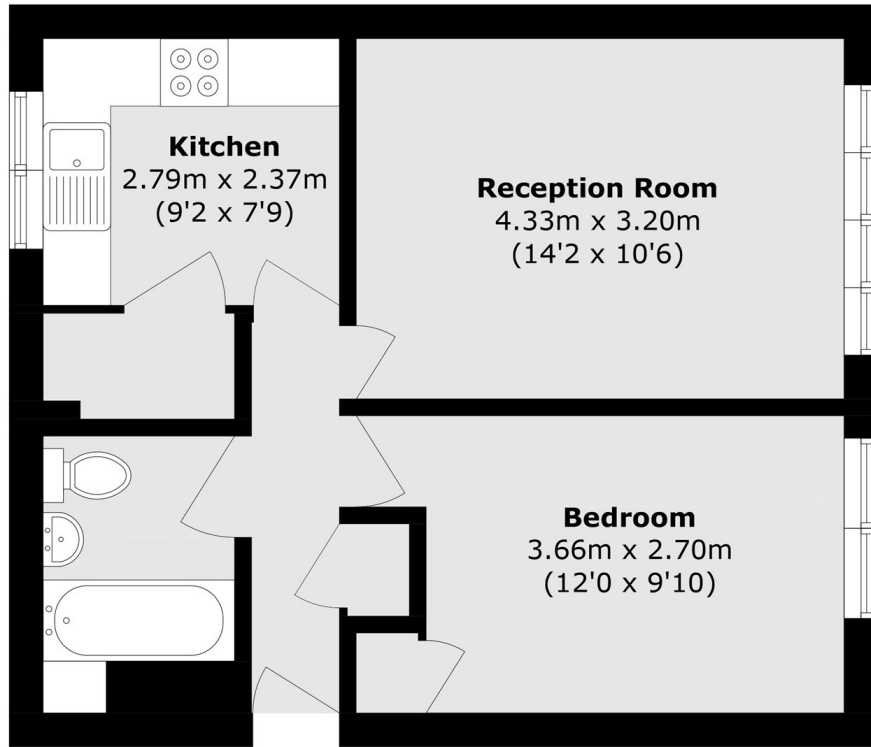
A first floor one bedroom apartment in a modern purpose built building aptly located in Twickenham. With potential to modernise, allocated parking and no onward chain this property is not to be missed.

Ivybridge Close is perfectly positioned off London Road and is just 0.3 miles to Twickenham mainline station.

Features

One Bedroom
Purpose Built
Allocated Parking
Fantastic Location
No Onward Chain
First Floor

Ivybridge Close, Twickenham, TW1



Total area (approx.): 43.5 sq. m (468.2 sq. ft)