

JAMES EDWARD

Comprehensively Cared For



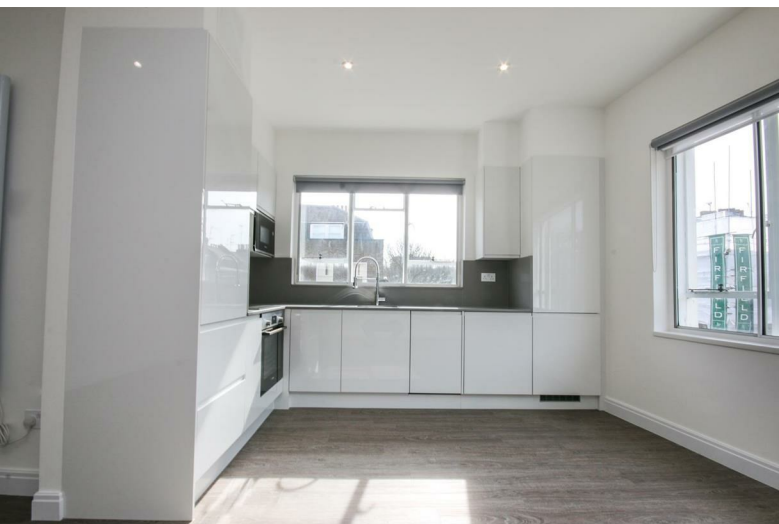
Guilford Street

, London, WC1N 1DP

£2,550 Per Month



Guilford Street



Description

Brand newly refurbished two bedroom apartment, situated in the heart of Bloomsbury. Short walk to Russell Square Underground, The City and the West End.

- Brand New Refurbishment
- Unfurnished
- Bright & Airy Throughout
- Close to Russell Square Underground
- Available Now
- Excellent Location
- Open Plan Living Room / Kitchen
- Close to The City & West End





Floor Plan



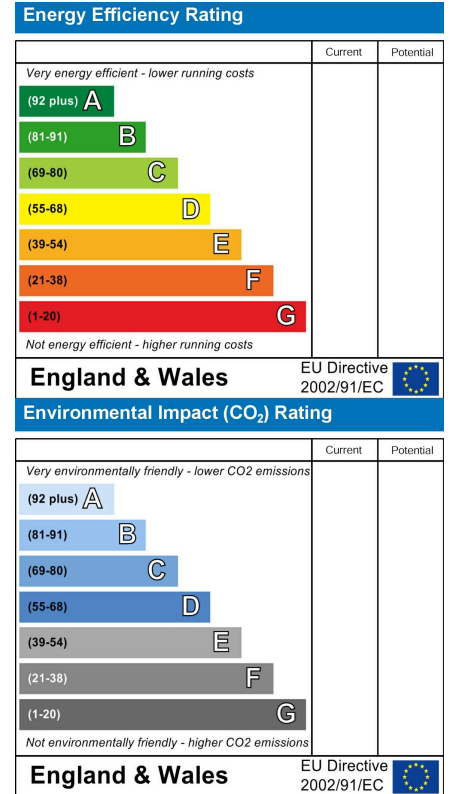
Area Map



Viewing

Please contact our James Edward Office on 020 7952 5197 if you wish to arrange a viewing appointment for this property or require further information.

Energy Efficiency Graph



These particulars, whilst believed to be accurate are set out as a general outline only for guidance and do not constitute any part of an offer or contract. Intending purchasers should not rely on them as statements of representation of fact, but must satisfy themselves by inspection or otherwise as to their accuracy. No person in this firm's employment has the authority to make or give any representation or warranty in respect of the property.

100 Highbury Park, London, N5 2XE

Tel: 020 7952 5197 Email: info@jamesedwardproperties.co.uk <https://www.jamesedwardproperties.co.uk>