

ROUNTHWAITE & WOODHEAD

MARKET PLACE, PICKERING, NORTH YORKSHIRE, YO18 7AA Tel: (01751) 472800 Fax: (01751) 472040



FLAT 3, WHEEL HOUSE TRAIN LANE, PICKERING, NORTH YORKSHIRE, YO18 8ET

A newly refurbished ground floor apartment close to the town centre

Living Room

Bedroom

uPVC Double Glazing

Inner Hall

Shower Room

Residents Parking

Kitchen

Electric Heating

EPC Rating D

RENT: £550 PER MONTH

Also at: 26 Market Place, Kirkbymoorside Tel: (01751) 430034 & 53 Market Place, Malton Tel: (01653) 600747
Email: enquiries@rwestateagents.co.uk

www.rounthwaite-woodhead.co.uk

Description

Pickering is a thriving market town found at the foot of the North York Moors National Park, along the A170 Thirsk to Scarborough Road. As a result there are excellent links to the East Coast and City of York where the Intercity train Service runs from London to Edinburgh. Pickering has a good range of shops, a Monday street market, reputable schools for all ages and amenities that include doctors surgery, dental clinics and library. There are also a wealth of recreational activities close to hand, such as Dalby Forest, The North York Moors Steam Railway and Pickering Castle.

Wheel House was previously a medical clinic and has been converted by the current owner into 7 smart one and two bedroom apartments with their own residents parking. They are convenient for the town's services being only a very short stroll to the centre.

Flat 3 is a ground floor, one bedroom apartment with a living room, a separate kitchen that includes a washing machine, fridge/freezer, electric oven and hob. The bedroom is served by a good sized shower room.

General Information

Services: Mains electricity and water are connected. Connection to mains drains. Electric Heating. Solar Panels. The tenant will reimburse the landlord for electricity used. There is a sub meter for this purpose.

Council Tax: The property has been assessed by North Yorkshire Council as Band A

Rent: £550 per calendar month, payable monthly in advance by bankers order. Strictly no smokers.

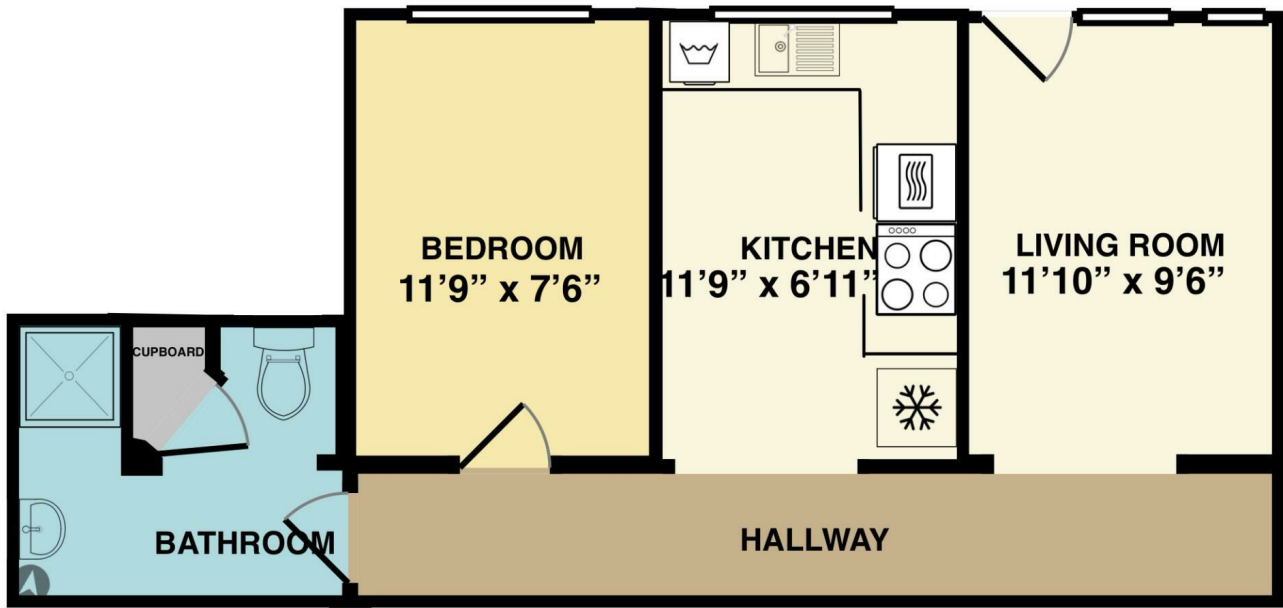
Tenancy: The property will be let on an Assured Periodic Tenancy

Deposit: A deposit of one calendar months rent will be required at the commencement of the tenancy. Rounthwaite & Woodhead will protect tenants deposits covered by the insurance backed scheme run by Tenancy Deposit Solutions (www.mydeposits.co.uk).

Outgoings: Tenants will be responsible for payment of electricity, water and Council Tax, plus the cost of a telephone/internet connection (if required and if applicable).



Accommodation



Energy Efficiency Rating		Current	Potential
<i>Very energy efficient - lower running costs</i>			
(92 plus) A			
(81-91) B			
(69-80) C			
(55-68) D		65	65
(39-54) E			
(21-38) F			
(1-20) G			
<i>Not energy efficient - higher running costs</i>			
England & Wales	EU Directive 2002/91/EC		

Environmental Impact (CO ₂) Rating		Current	Potential
<i>Very environmentally friendly - lower CO₂ emissions</i>			
(92 plus) A			
(81-91) B			
(69-80) C			
(55-68) D			
(39-54) E			
(21-38) F			
(1-20) G			
<i>Not environmentally friendly - higher CO₂ emissions</i>			
England & Wales	EU Directive 2002/91/EC		



Messrs Rounthwaite & Woodhead for themselves and their vendors and lessors whose agents they are give notice that these particulars are produced in good faith, set out as a general guide only and do not constitute any part of a contract. No person employed by Messrs Rounthwaite & Woodhead has any authority to make or give any representation or warranty whatsoever in relation to this property. The dimensions in the sales particulars are approximate only and the accuracy of any description cannot be guaranteed. Reference to machinery, services and electrical goods does not indicate that they are in good or working order. All reference to prices and rents etc. exclude VAT which may apply in some cases.

Covering Ryedale through offices in Malton, Pickering and Kirkbymoorside
www.rounthwaitewoodhead.co.uk

ROUNTHWAITE & WOODHEAD