



47 Larksfield, Englefield Green, TW20 0RB

This well-presented three-bedroom terraced home, built in 1983, offers comfortable and practical living in a desirable residential setting. The property benefits from brand new carpets throughout, gas central heating to radiators, and double glazed windows, ensuring warmth and efficiency all year round.

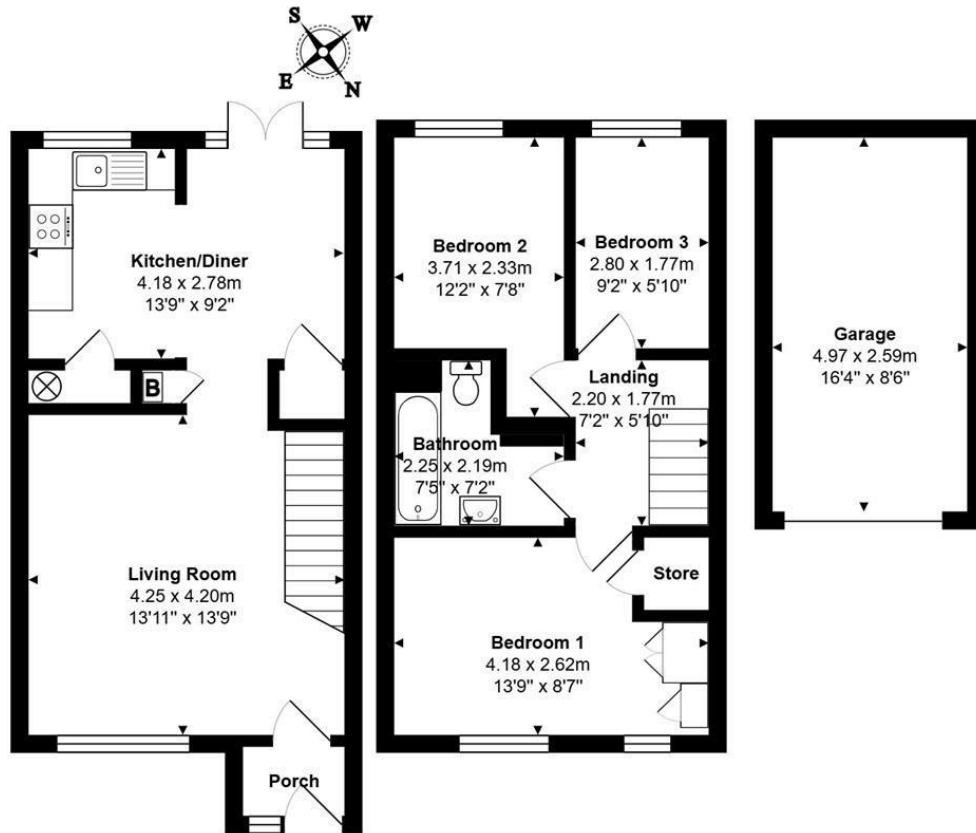
The accommodation includes a spacious kitchen/diner, ideal for everyday family life and outside, the home is conveniently located just a short walk from the popular Great Park, perfect for leisure and outdoor activities.

Additional features include a garage situated in a nearby block, as well as excellent local amenities. Junior schools and village shops are within approximately a 5-minute walk, while Egham's mainline train station is around 1 mile away, providing good transport links. For motorists, Junction 13 of the M25 is just a 5–6 minute drive.

Offered to the market with no onward chain, this property represents an excellent opportunity for a smooth and straightforward purchase. NB: the images include some computer generated accessories. EPC Rating: D.



Floor Plan



Total Area: 67.3 m² ... 724 ft² (excluding garage)



Features

- 3 Bedroom House
- Built Approx. 1983
- Lovely Living Room
- D' Glazed Windows
- Southerly Aspect Garden
- Prime Residential Location
- Easy Access to The Great Park
- Kitchen/Diner
- Gas C.H. to Radiators
- Garage

10 St Judes Road, Englefield Green, Surrey TW20 0BY
 Tel 01784 433696
 sales@aspenestateagents.co.uk



Tenure - Freehold Council Tax Band - D

