



Price
£235,000

Freehold

2x  1x  1x 

**Warwick Place,
Maidstone, Kent ME16**

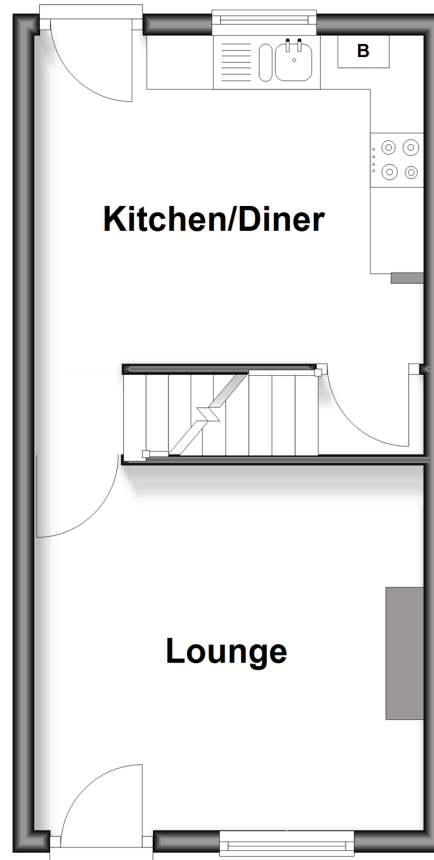
OVER 60?

Secure this property
for up to **59% less!**

Wards
Helping you move forwards

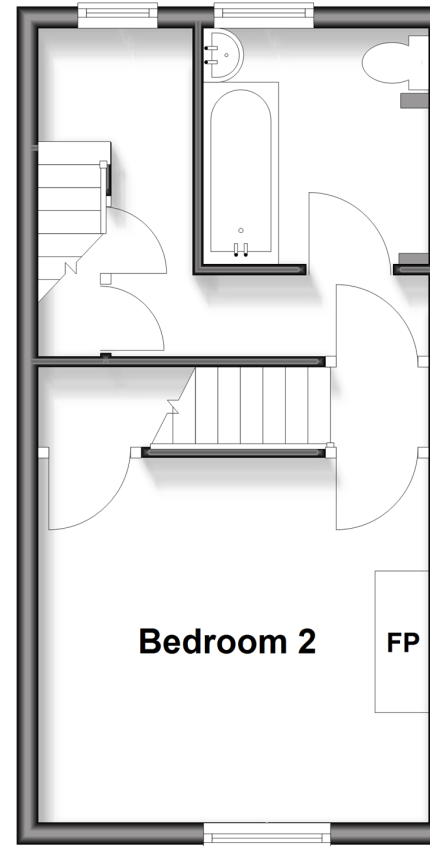
Ground Floor

Approx. 26.7 sq. metres (287.6 sq. feet)



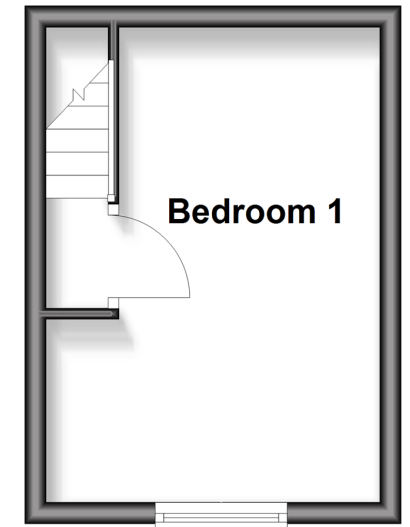
First Floor

Approx. 26.7 sq. metres (287.6 sq. feet)



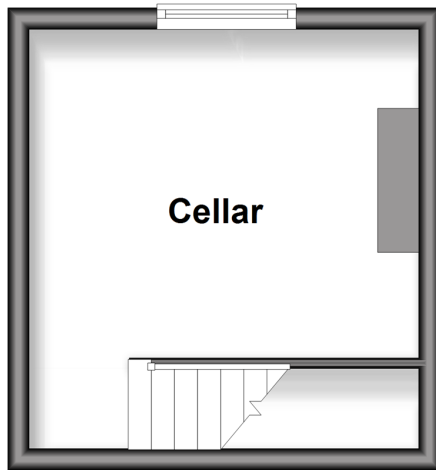
Second Floor

Approx. 15.2 sq. metres (164.0 sq. feet)



Basement

Approx. 14.1 sq. metres (151.6 sq. feet)



Accommodation

GROUND FLOOR

Entrance Hall

Lounge: 11'10 x 11'3 (3.61m x 3.43m)

Kitchen/Diner: 12'10 x 9'9 (3.91m x 2.97m)

BASEMENT

Cellar

FIRST FLOOR

Landing

Bedroom 2: 14'4 (4.37m) x 10'8 (3.25m) narrowing to 8'0 (2.44m)

Bathroom

SECOND FLOOR

Landing

Bedroom 1: 11'9 x 11'2 (3.58m x 3.41m)

OUTSIDE

Rear Garden



Main features

- Chain free Victorian house
- Accommodation arranged over 3 floors
- Double glazing and central heating
- Ideal first time buy or investment opportunity
- Easy access to the town centre and local amenities

Nearest Schools

Primary Schools: Maidstone, St Michael's C of E Junior School 0.1 miles, Brunswick House Primary 0.4 miles, St Francis' Catholic Primary, Maidstone 0.5 miles

Secondary Schools: The Astor of Hever Community

Transport Information

Train Stations: Maidstone West 0.5 miles, Maidstone Barracks 1.0 miles, Maidstone East 1.1 miles

Address

Warwick Place, Maidstone, Kent ME16

Directions

For directions to this property please contact us.



Wards
Helping you move forwards

Call Maidstone Branch 01622 683737 ■ wardsofkent.co.uk



- The seller is a person connected with Wards as defined in the Estate Agents Act 1979
- Appliances & services are untested, dimensions are approximate and floor plans are not to scale

- Legal advice should be taken to verify fixtures/fittings, planning, alterations and/or lease details
- Through a Homewise Home For Life Plan people aged 60+ can secure this property for up to 59% less, by purchasing a Lifetime Lease



13159175/20260112/CV/DS