

9 Haycliffe Avenue

Bradford, Bradford

This well-presented semi detached house offers three generous bedrooms, a modern family bathroom, and bright reception room, making it ideal for comfortable family living. The heart of the home is the contemporary kitchen, designed with sleek modern units, a double oven, and a gas hob. Ample countertop space and a light colour palette create a bright and functional cooking environment. The adjoining conservatory, filled with natural light from large windows, provides a versatile additional living space and seamless access to the private garden.

The charming stone and brick facade, along with mature trees and a paved pathway, enhances the kerb appeal and ensures privacy, making this home truly inviting.

Council Tax band: B

Tenure: Freehold

- Three bedroom semi- detached
- Modern kitchen with double oven and ample countertop space
- Conservatory with garden access
- Modern bathroom with shower unit
- Off-road parking
- Popular residential location
- New carpet flooring
- Kitchen is fitted with Integrated appliances



Living room

Kitchen

Bathroom

Bedroom 1

Bedroom 2

Bedroom 3

Conservatory





Living room

Kitchen

Bathroom

Bedroom 1

Bedroom 2

Bedroom 3

Conservatory

RIGHTHOUSE
SALES LETTINGS AUCTIONS



RIGH
SALES LE



RIGH
SALES LE

Living room

Kitchen

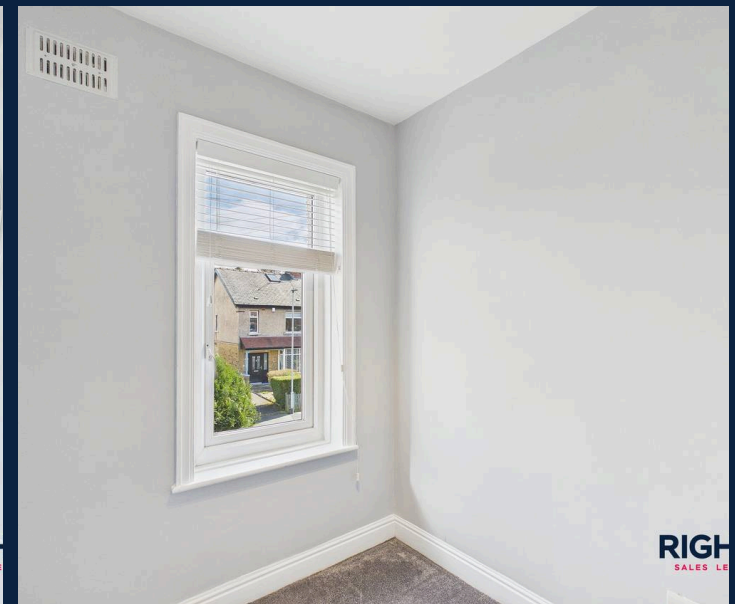
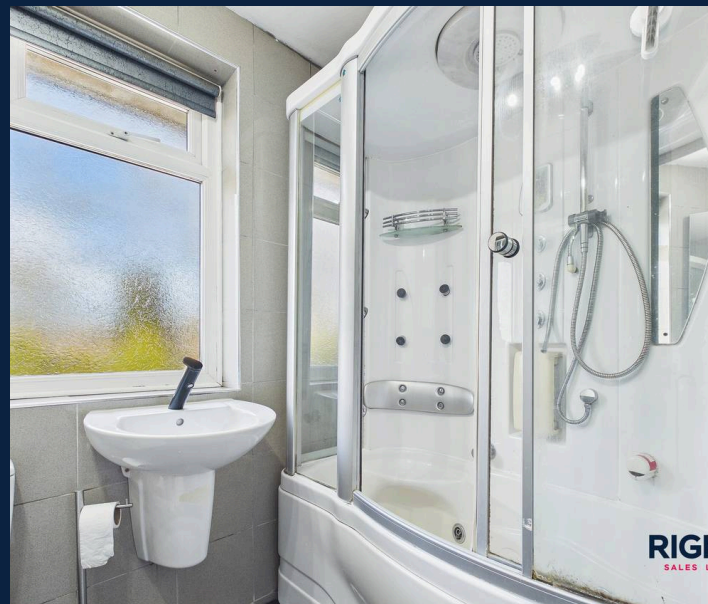
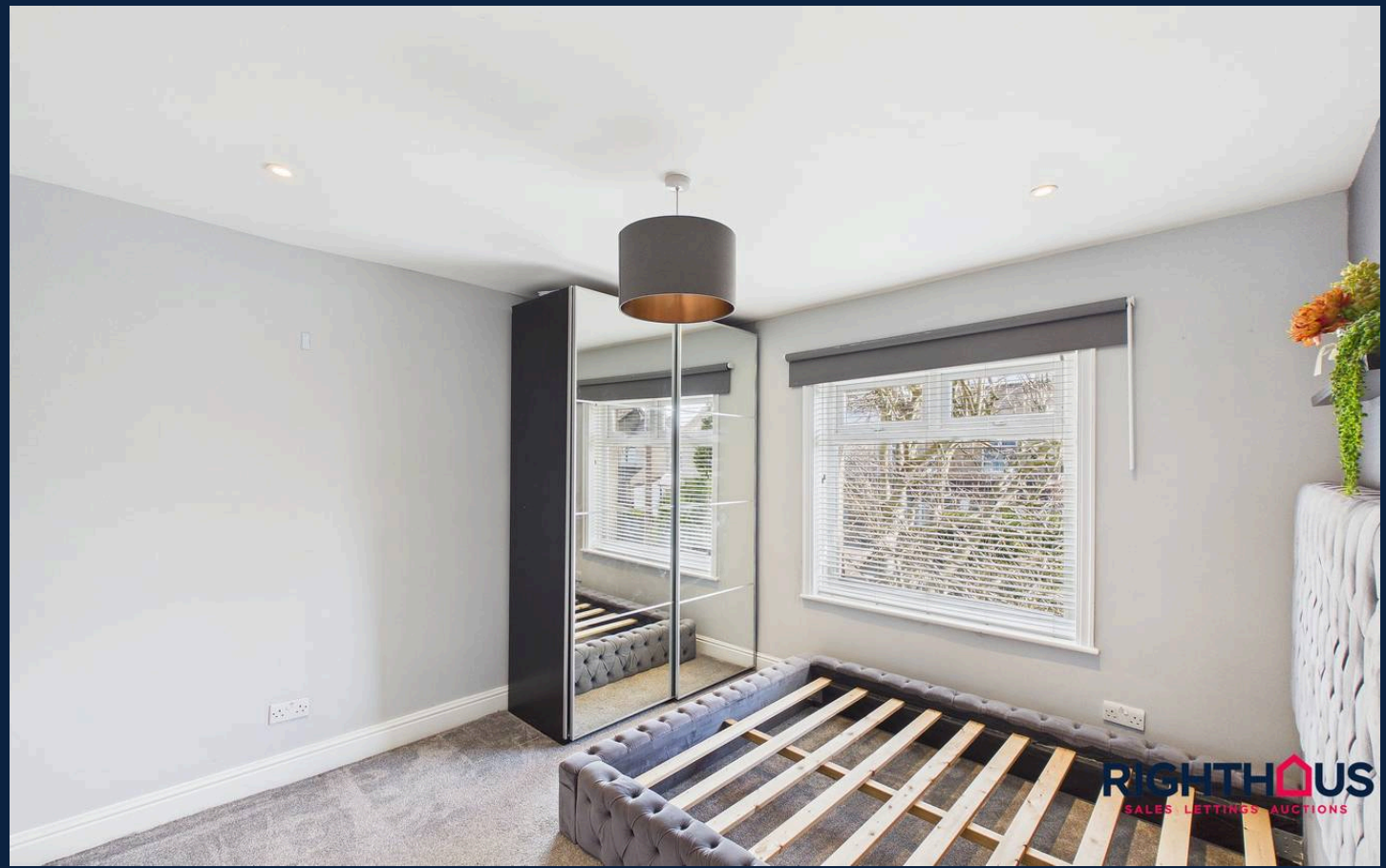
Bathroom

Bedroom 1

Bedroom 2

Bedroom 3

Conservatory



GARDEN

DRIVEWAY

2 Parking Spaces





Righthaus Estate Agents

Righthaus Estate Agents, 208 High Street - BD6 1QP

01274 813500

wibsey@yourrighthaus.co.uk

www.yourrighthaus.co.uk/



RIGHTHAUS
SALES LETTINGS AUCTIONS