



HUNTERS[®]

HERE TO GET *you* THERE



8



7



2



Fairfield Road, New Romney

Asking Price £1,150,000



This exceptional detached Grade II listed residence is set within the heart of the picturesque Romney Marsh, offering an exquisite blend of luxury, space and refined lifestyle living. Extending to over 7,200 sq ft, including the annexe and leisure outbuildings, This property presents an outstanding opportunity to acquire one of the area's most distinguished homes.

Approached via a private driveway with extensive off-street parking for up to six vehicles, the property delivers an immediate sense of grandeur and exclusivity. Internally, elegant reception spaces combine effortlessly with contemporary family living. The impressive kitchen and reception room forms the heart of the home, perfectly designed for sophisticated entertaining and everyday comfort. Further accommodation includes a formal dining room, luxurious living room, library, office, orangery and utility room, all beautifully appointed throughout.

A dedicated cinema room provides the ultimate private entertainment experience, while the upper floors offer six generously proportioned bedrooms, including a magnificent principal suite and multiple bath and shower rooms.

The self-contained annexe offers superb flexibility for guests, extended family or holiday accommodation. Externally, the grounds are equally impressive, featuring a swimming pool, gym, games room and extensive outbuildings, creating a truly exceptional lifestyle residence.

Ideally positioned within New Romney, the property is conveniently located for boutique shops, cafés, restaurants and everyday amenities. The beautiful beaches of Greatstone and Littlestone are just moments away, with the surrounding Romney Marsh countryside offering stunning walks and outdoor pursuits. Excellent transport connections via Ashford International provide high-speed access to London.

156a High Street, Hythe, Kent, CT21 6JU | 01303 261557
hythe@hunters.com | www.hunters.com



KEY FEATURES

- GRADE II LISTED
- Dedicated cinema room
- Swimming pool, gym and games room
- Extensive off-street parking for up to six vehicles
- Six generous bedrooms including a luxurious principal suite
- Over 7,200 sq ft of luxurious accommodation
- Surrounded by scenic countryside walks
- Rare lifestyle residence combining luxury coastal and country living

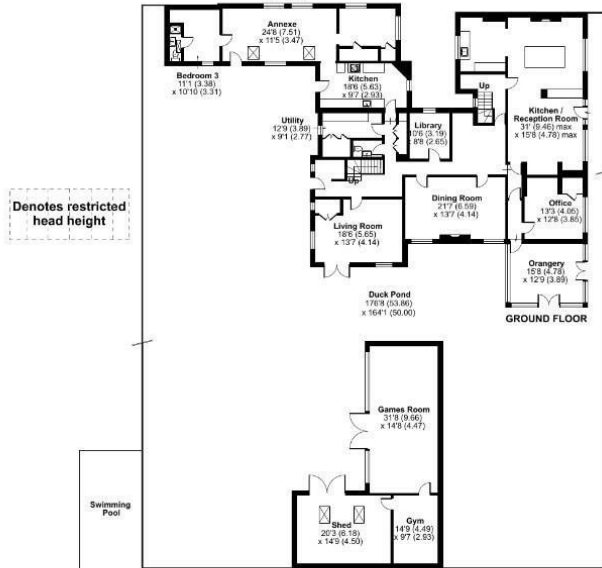




Craythorne House, Fairfield Road, New Romney, TN28

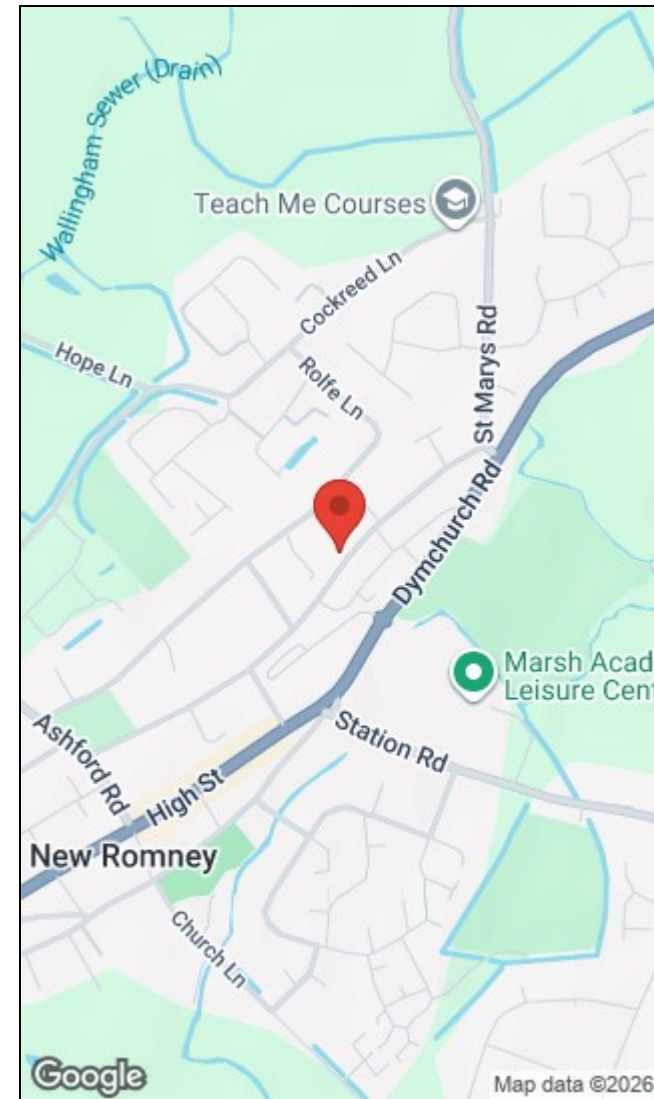
Approximate Area = 5517 sq ft / 512.5 sq m
 Limited Use Area(s) = 29 sq ft / 2.6 sq m
 Annexe = 738 sq ft / 68.5 sq m
 Outbuilding = 919 sq ft / 85.3 sq m
 Total = 7203 sq ft / 668.9 sq m

For identification only - Not to scale



Denotes restricted head height

Floor plan produced in accordance with RICS Property Measurement 2nd Edition, incorporating International Property Measurement Standards (IPMS2 Residential). © richcom 2026. Produced for Flynn Homes Limited. REF: 1435498



156a High Street, Hythe, Kent, CT21 6JU | 01303 261557
 hythe@hunters.com | www.hunters.com



This Hunters business is independently owned and operated by Black & White Estates Limited | Registered Address: 4 Middle Row, Ashford, Kent, TN24 8SQ | Registered Number: 7896701 England and Wales | VAT No: 973 6297 73 with the written consent of Hunters Franchising Limited.