



## Rotherhithe Street, SE16

### £600,000

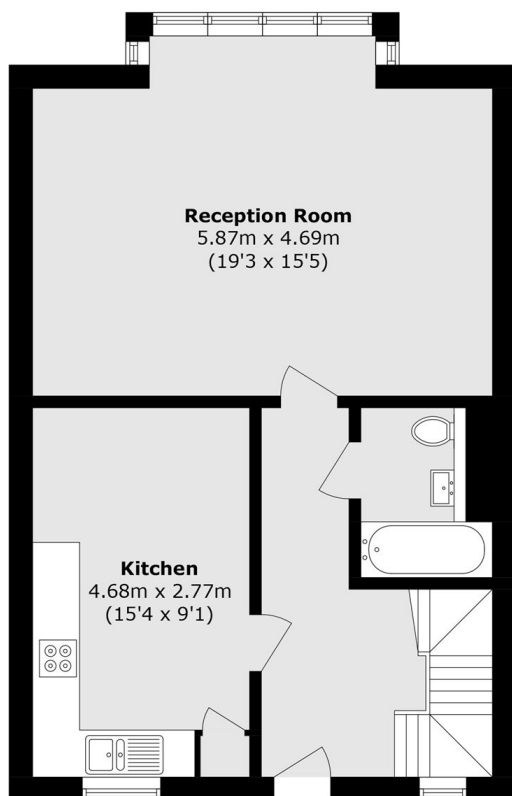
Situated in a sought after secure riverside development, this three double bedroom split level apartments boasts a large living space, separate kitchen, private balcony, gated parking and is being sold chain free.

Located within a mile from Canada Water station and Surrey Quays station, the development offers excellent transport links to the rest of London and is surrounded by cafés, shops, riverside restaurants and pubs.

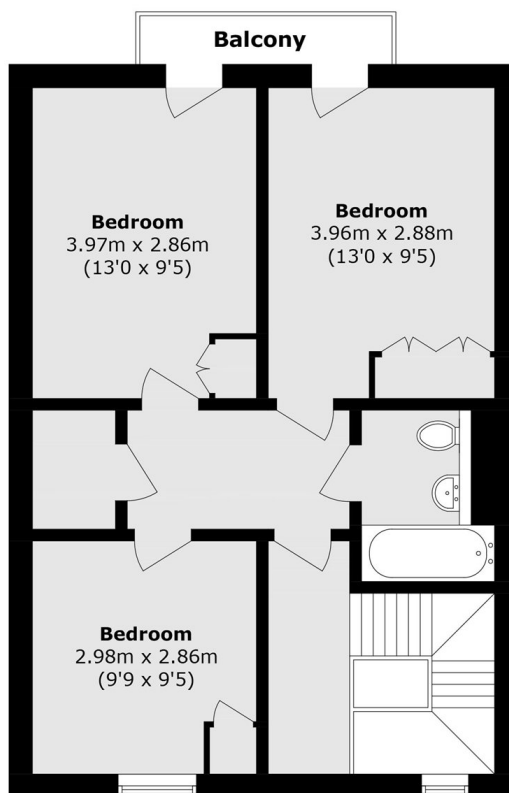
### Features

- Three Double Bedrooms
- Two Bathrooms
- Share Of The Freehold
- Private Balcony
- Concierge Facilities
- Secure Gated Development

# Rotherhithe Street, London, SE16



**First Floor**



**Second Floor**

Total area (approx.): 105.3 sq. m (1133.4 sq. ft)  
Balcony area (approx.): 1.9 sq. m (20.4 sq. ft)