



Springfield Road, KT1 £350,000

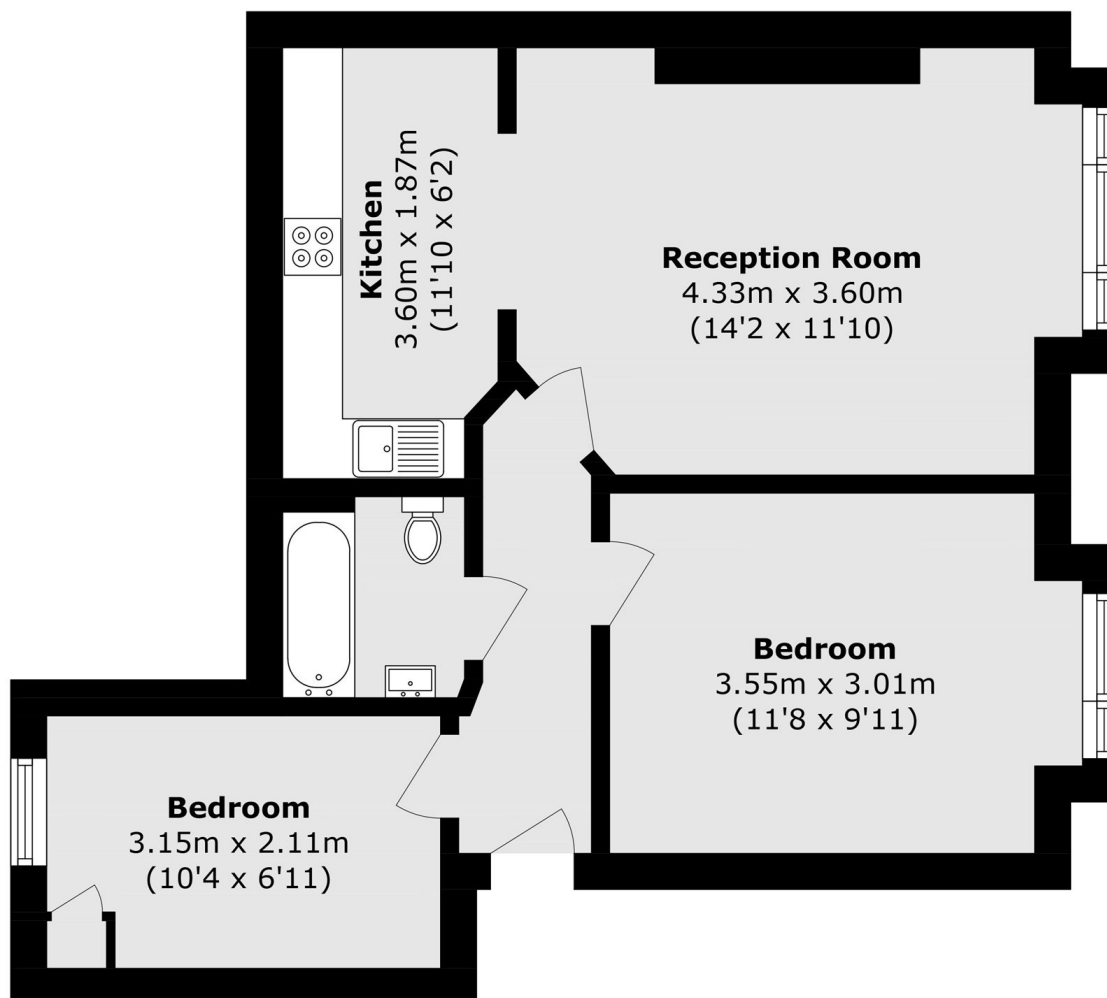
Situated on the third floor of this attractive development, the apartment enjoys appealing views from both the main reception room and principal bedroom. The property offers two well proportioned bedrooms, a modern kitchen open to a spacious living area, and a family bathroom. Externally, the development is gated and benefits from private residents' parking.

Springfield Court is ideally positioned on a quiet residential road, just over 500 yards from Kingston town centre, offering an extensive range of shopping and leisure amenities. The banks of the River Thames and its picturesque riverside walks are approximately 700 yards away, while Surbiton station, with its fast and frequent services into London, is less than a mile from the property.

Features

- 2 Bedroom
- Third Floor
- Gated Development
- Residents Parking
- No Onward Chain
- Popular Location

Springfield Road, Kingston Upon Thames, KT1



Total area (approx.): 49.0 sq. m (527.4 sq. ft)