



## Framfield Road, W7

£670,000

This charming Victorian house is located in an increasingly popular area close to the Elizabeth line and sought after schools.

Ideal for a purchaser to move in and put their own stamp on it over time. Many neighbouring houses have been extensively extended into the loft and to the rear.

Consists of two formal reception rooms, garden room, kitchen, bathroom and three bedrooms.

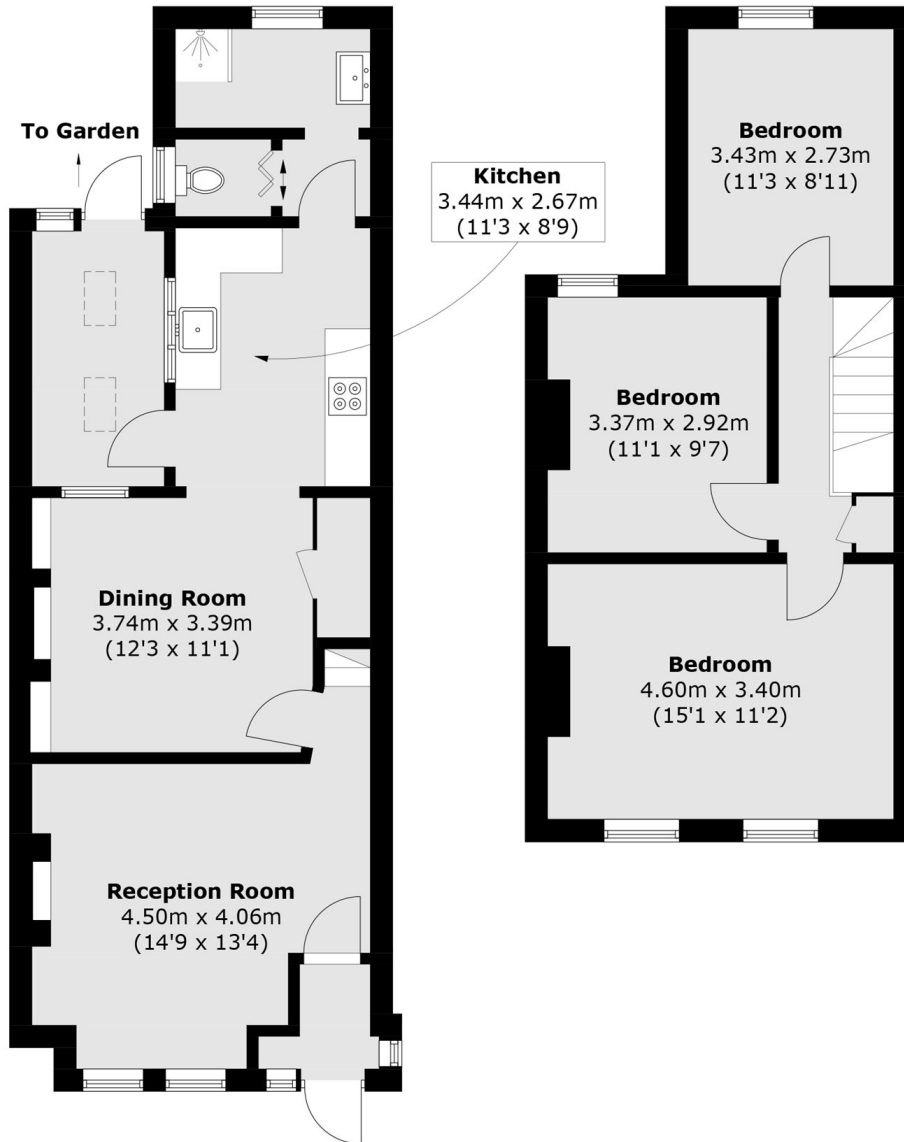
Benefits from a well established garden.

Viewing is highly recommended.

### Features

Victorian House  
Three Bedrooms  
Potential to Extend  
Nice Garden  
Excellent Location  
Close to Elizabeth Line

Framfield Road,  
London, W7



**Ground Floor**

**First Floor**

Total area (approx.): 98.8 sq. m (1,063.4 sq. ft)