



Colmar House, Capital Interchange Way, Brentford, TW8

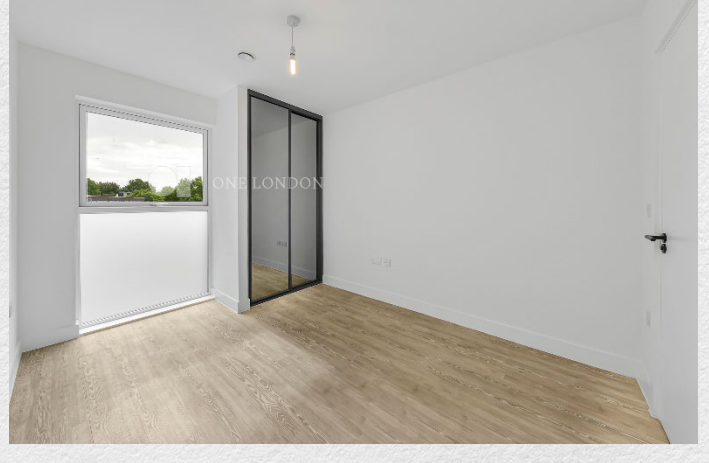
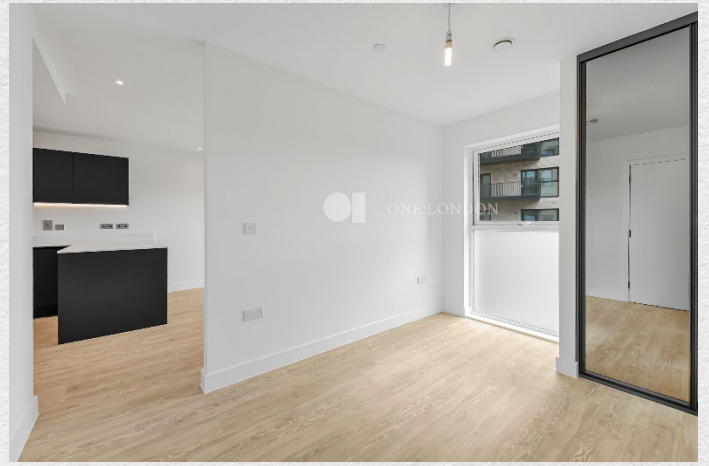
£1,900 pcm

- 2nd floor apartment
- One bedroom
- One bathroom
- 439 sq ft
- Furnished
- Fitted wardrobe
- Private balcony
- Lift access
- Close to local amenities
- Great transport links

This beautifully proportioned one-bedroom apartment offers a perfect blend of style, comfort, and urban convenience. Spanning an impressive 439 square feet, the property features a well-designed layout crafted to maximize both natural light and functional space. Offered furnished

The heart of the home is a bright, open-plan reception and dining area, ideal for relaxing or entertaining. It incorporates a sleek, fully integrated modern kitchen equipped with high-quality appliances. The separate bedroom serves as a quiet, peaceful retreat, while the contemporary bathroom is thoughtfully appointed with stylish fixtures.

Located in the highly sought-after Colmar House development, residents benefit from Brentford's vibrant community atmosphere and excellent transport links, ensuring effortless access to Central London. A fantastic choice for first-time buyers or professional couples looking for a well-connected modern home.



PROPERTY

*Colmar House, 7 Capital
Interchange Way, TW8*

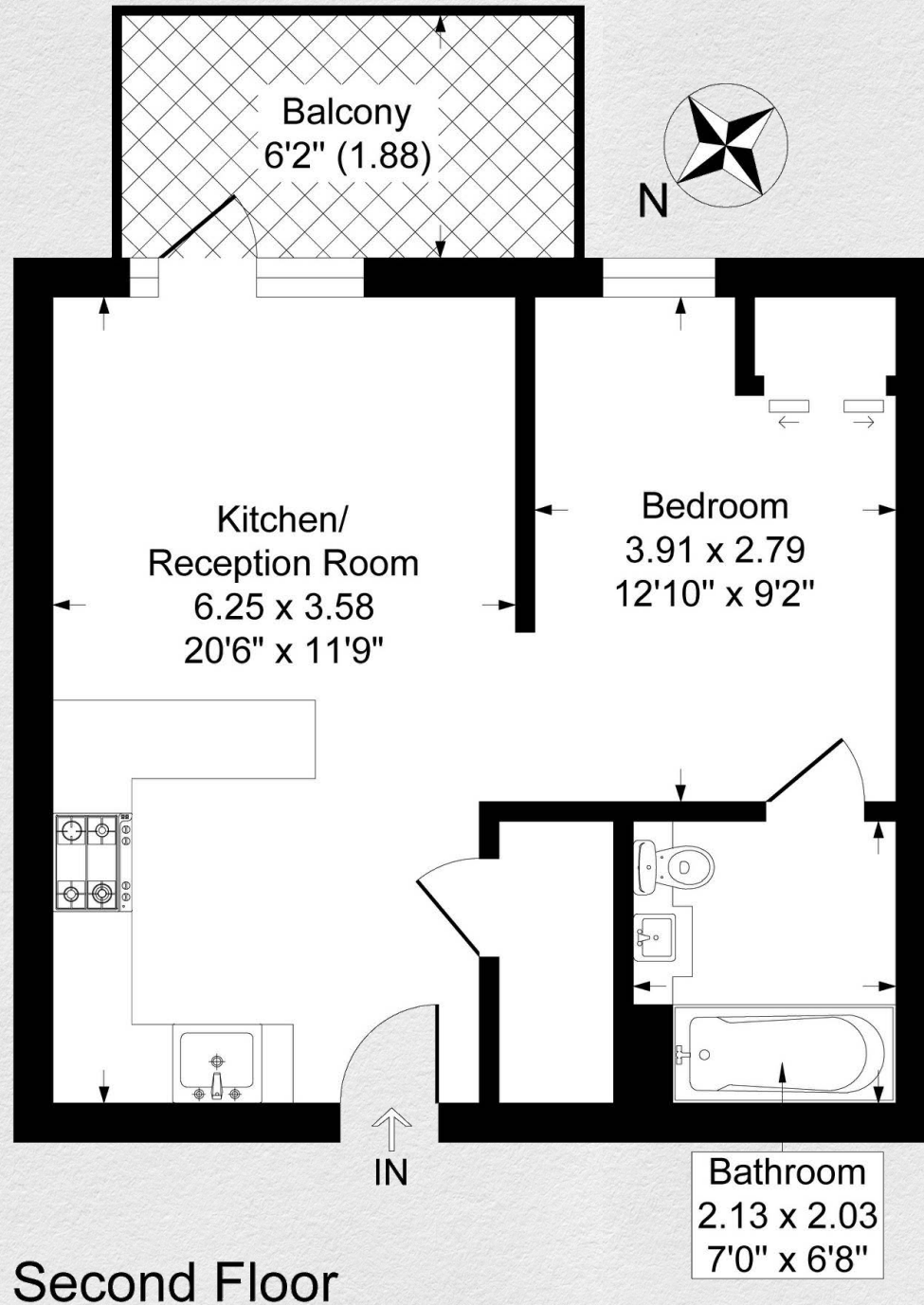
SIZE

439 sq ft

One bedroom | One bathroom

CONTACT

*0207 856 0396
info@one-london.uk
www.one-london.uk*



Second Floor

*** For illustration purposes only. Could not be to scale.
One-London aims to ensure accuracy but is not liable
for any discrepancies.*