



1 Lanchester Way London

This two bedroom apartment is set within the luxury development Lexington Gardens, The Residence. Situated in Nine Elms, close to Vauxhall and Nine Elms Stations, this stunning property is conveniently located for transport links to the City.

The property has been finished to the highest standard including underfloor heating, a combination washer / dryer and dishwasher.

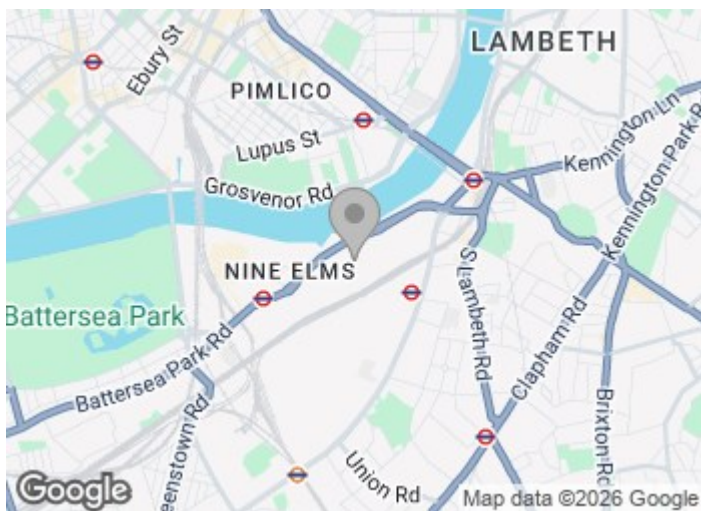
Residents will also benefit from the 24 hour concierge service, a residents gym, media lounge and conference room

£800 Per Week

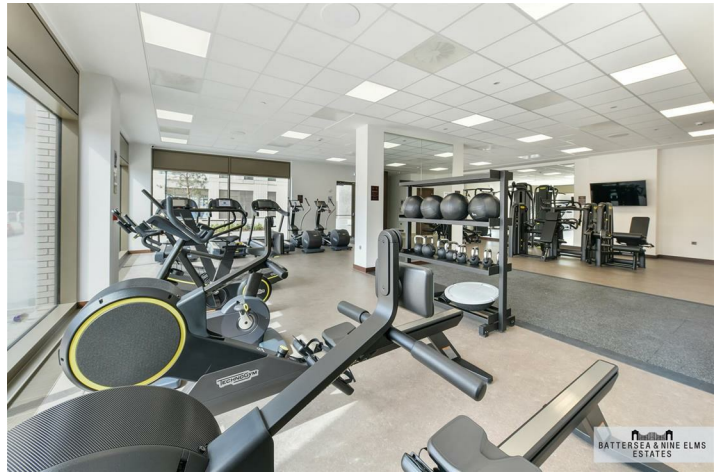
1 Lanchester Way London



- Two double bedrooms
- Two bathrooms
- Resident gym
- Walking distance to Zone 1
- 24 Hour Concierge



[Directions](#)



Kennedy Building,
Lexington Gardens,
Nine Elms, SW8
Approximate Gross Internal Area
72.2 sq m / 777 sq ft
(CH = Ceiling Heights)

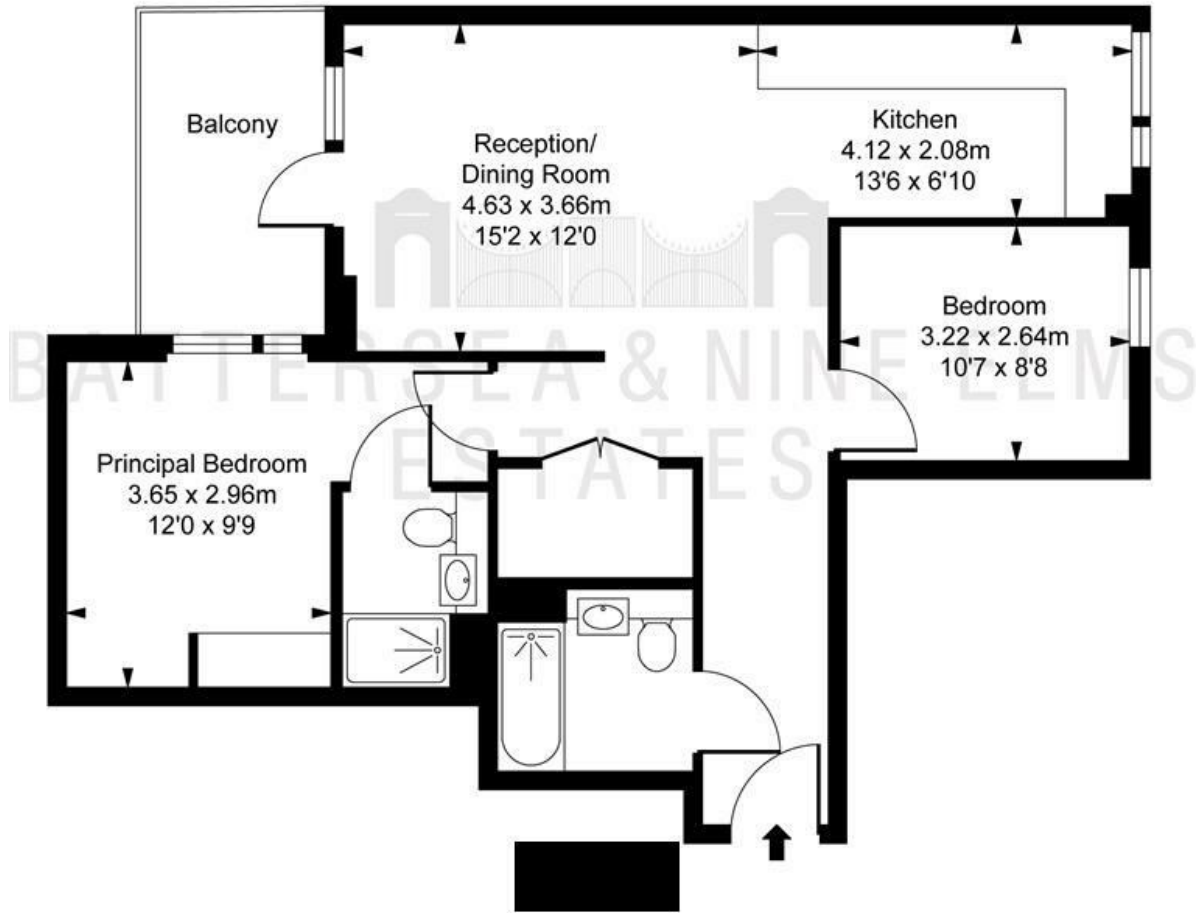


ILLUSTRATION FOR IDENTIFICATION PURPOSES ONLY
ALL MEASUREMENTS AND AREA FIGURES SUPPLIED BY OTHERS. ACCURACY IS NOT GUARANTEED.
THIS PLAN MUST NOT BE REPRODUCED BY ANY OTHER PERSON WITHOUT PERMISSION

These particulars, whilst believed to be accurate are set out as a general outline only for guidance and do not constitute any part of an offer or contract. Intending purchasers should not rely on them as statements of representation of fact, but must satisfy themselves by inspection or otherwise as to their accuracy. No person in this firm's employment has the authority to make or give any representation or warranty in respect of the property.

Energy Efficiency Rating		Environmental Impact (CO ₂) Rating	
	Current	Potential	
Very energy efficient - lower running costs			Very environmentally friendly - lower CO ₂ emissions
(92 plus) A			(92 plus) A
(81-91) B			(81-91) B
(69-80) C			(69-80) C
(55-68) D			(55-68) D
(39-54) E			(39-54) E
(21-38) F			(21-38) F
(1-20) G			(1-20) G
Not energy efficient - higher running costs			Not environmentally friendly - higher CO ₂ emissions
	87	87	
England & Wales	EU Directive 2002/91/EC		England & Wales
			EU Directive 2002/91/EC