



Ronelean Road, KT6

£559,950

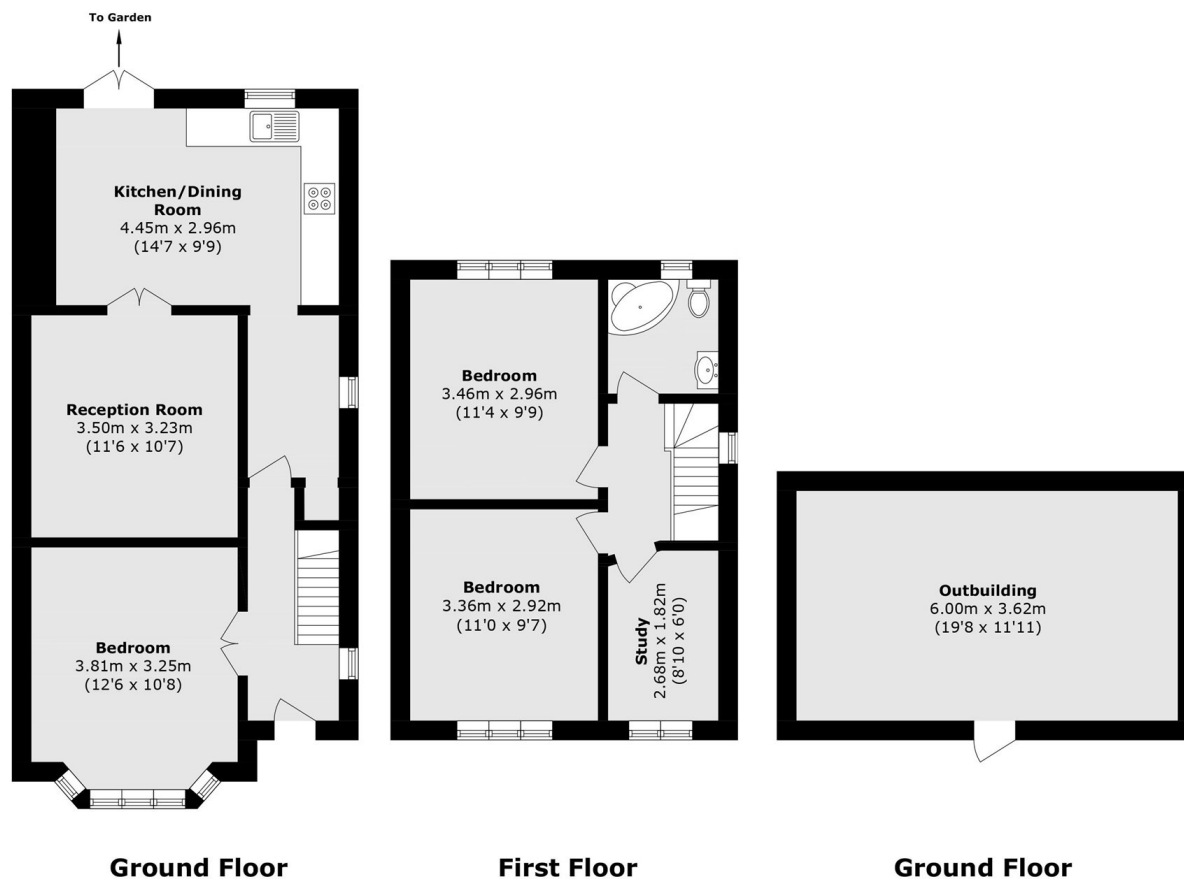
This semi-detached family home is well located for transport links, amenities and schools. The accommodation consists of three bedrooms, a large through reception room with wooden floors, a fitted kitchen/breakfast room and bathroom with corner bath and shower. To the front there is off street parking and to the rear a large private garden and a useful outbuilding. This property could also be extended in to the loft (STPP)

Ronelean Road is a peaceful residential road, offering easy access to the A3 and just over a mile away from Tolworth train station and an array of shops, bars and restaurants as well as some great local schools

Features

- Semi-Detached
- Three Bedrooms
- Two Reception Rooms
- Large Private Garden
- Off-Street Parking
- Great Location

Ronelean Road, Surbiton, KT6



Total area (approx.): 83.2 sq. m (895.5 sq. ft)
Outbuilding area (approx.): 21.7 sq. m (233.5 sq. ft)