



Connells

Mill Lane
Willenhall



Property Description

Connells Wolverhampton are delighted to bring to market this well presented and attractive two bedroom end terrace property in a popular location. Benefiting from private electric gated access to rear, this property should be viewed order to fully appreciate. Please contact Connells today to book a viewing.

The property comprises of entrance porch, lounge, kitchen diner, two bedrooms and bathroom. Externally there is a highly landscaped rear garden and private electric gated access to rear.

The Location & Area

Set just off Lucknow Road in a popular residential area the property is ideally placed for access to M6 and adjoining M54 motorways. With a range of popular local schooling nearby, Bloxwich rail station and hospital are both approximately two miles away.

Entrance Hall

Door to front, door to lounge.

Lounge

12' 9" x 10' 9" (3.89m x 3.28m)

Double glazed window to front, door to kitchen, central heating radiator, stairs to first floor landing.

Kitchen Diner

9' 8" x 9' 8" (2.95m x 2.95m)

Double glazed door and window to rear, a range of wall and base units with an inset sink, inset oven, hob and extractor, space for various appliances, space to dining table and chairs, central heating radiator, door to lounge.

First Floor Landing

Doors to various rooms

Bedroom One

12' 3" x 9' 7" (3.73m x 2.92m)

Double glazed window to rear, central heating radiator, fitted wardrobe, door to first floor landing.

Bedroom Two

7' 4" x 7' 9" (2.24m x 2.36m)

Double glazed window to front, central heating radiator, door to first floor landing.

Bathroom

Panelled bath with electric shower, pedestal sink, low flush toilet, heated towel rail, door to first floor landing.

Outside Front

Small courtyard style frontage.

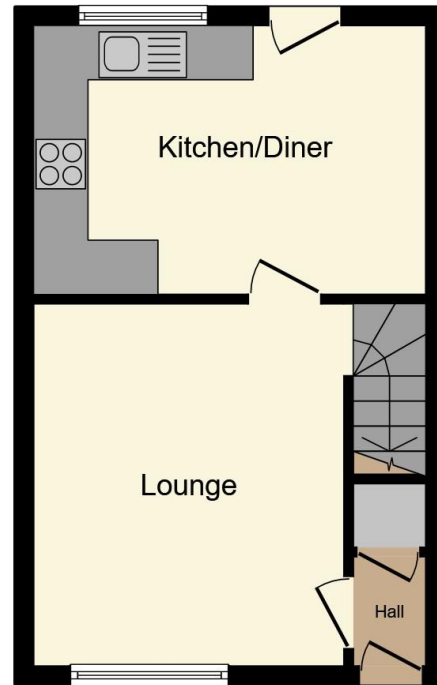
Outside Rear

Good size enclosed garden which is landscaped, paved pathway, artificial lawned area, electric composite gardens to rear.

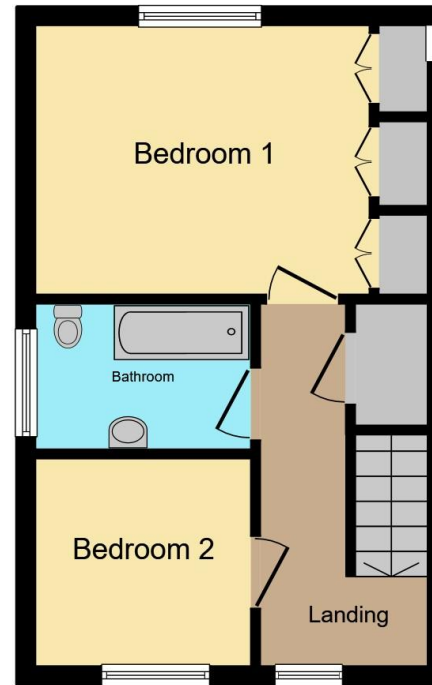








Ground Floor



First Floor

Total floor area 61.1 m² (657 sq.ft.) approx

This floor plan is for illustrative purposes only. It is not drawn to scale. Any measurements, floor areas (including any total floor area), openings and orientation are approximate. No details are guaranteed, they cannot be relied upon for any purpose and they do not form part of any agreement. No liability is taken for any error, omission or misstatement. A party must rely upon its own inspection(s). Powered by www.propertybox.io



To view this property please contact Connells on

T 01902 710 170
E wolverhampton@connells.co.uk

81-83 Darlington Street
WOLVERHAMPTON WV1 4EX

EPC Rating: D Council Tax
Band: A

Tenure: Freehold

view this property online connells.co.uk/Property/WVH334352



1. MONEY LAUNDERING REGULATIONS Intending purchasers will be asked to produce identification documentation at a later stage and we would ask for your co-operation in order that there will be no delay in agreeing the sale. 2. These particulars do not constitute part or all of an offer or contract. 3. The measurements indicated are supplied for guidance only and as such must be considered incorrect. Potential buyers are advised to recheck measurements before committing to any expense. 4. We have not tested any apparatus, equipment, fixtures, fittings or services and it is in the buyers interest to check the working condition of any appliances.

Connells Residential is registered in England and Wales under company number 1489613, Registered Office is Cumbria House, 16-20 Hockliffe Street, Leighton Buzzard, Bedfordshire, LU7 1GN. VAT Registration Number is 500 2481 05.

See all our properties at www.connells.co.uk | www.rightmove.co.uk | www.zoopla.co.uk

Property Ref: WVH334352 - 0005